



St. Martin's Place, WC2N

£1,500 Per week

Dexters



St. Martin's Place, WC2N

A three-bedroom penthouse apartment with a roof terrace offering stunning views of London's most iconic landmarks.

Located in a period Grade 2 listed building of just eight apartments with a modern passenger lift. The apartment is arranged over two floors and comprises an entrance hall with glass doors opening to the reception room which enjoys a dual aspect with four windows and space to dine.

The kitchen is located separately, main bedroom with en suite bathroom, second bedroom with en suite shower room, guest W.C/laundry room. A staircase leads from the hallway to a double bedroom that accesses the terrace which provide superb recreation and entertaining space overlooking the historic London landmarks.

St Martins Place runs between Trafalgar Square northwards to Long Acre and Leicester Square. It is also the address of the National Portrait Gallery which is virtually next door.

Features

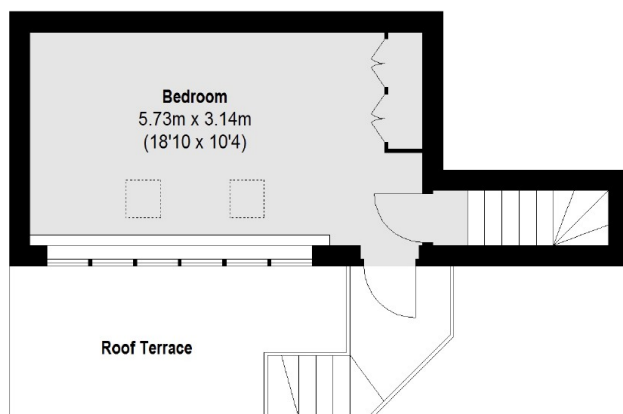
- Duplex Penthouse
- Wooden Floors
- Central Location
- Large Roof Terrace
- Panoramic View Of London
- Fourth Floor With Lift



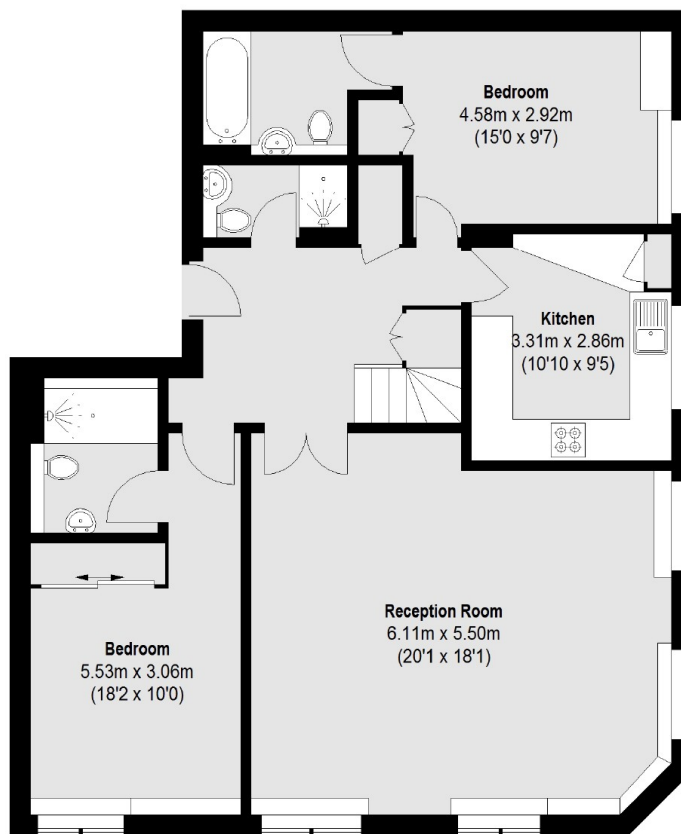




St. Martin's Place, London, WC2N



Fifth Floor



Fourth Floor

Total area (approx.): 113.28 sq. m (1219 Sq. ft)
Roof Terrace: 9.82 sq. m (106 Sq. ft)