



## **4 Bedroom Town House Kingsborough Place, Kingston Upon Thames. £1,299,950 Freehold**

An exclusive 4 bedroom high specification family home, ideally situated in leafy North Kingston. This wonderful property, built just 5 years ago, boasts, modern and spacious living accommodation arranged over 3 floors and offers 1,647 sq ft of internal living space.

Nestled in the heart of fashionable North Kingston, and designed to the highest standard, this exceptional property benefits from many outstanding features including a German Burger designer kitchen with solid work tops and Neff appliances.

Engineered wood flooring to the ground floor, double glazed windows, porcelain tiling and Villeroy & Boch taps in the bathrooms, underfloor heating throughout.

Bifold doors open out to the landscaped rear garden, allocated off road Parking Space.

Kingsborough Place is an exclusive modern development in a prime position close to Richmond Park, outstanding local schools and Norbiton Mainline Station [zone 5] with frequent trains to London Waterloo.

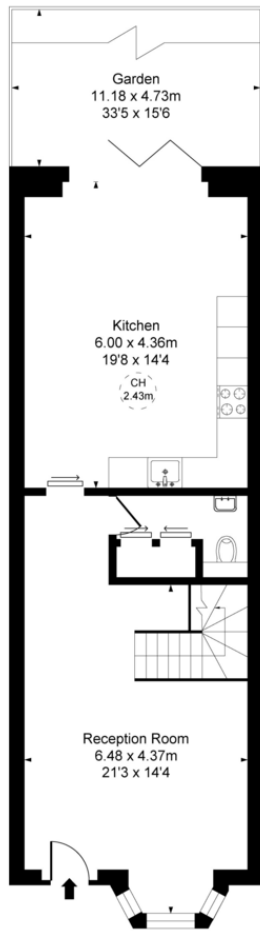
[WWW.STACKANDBONNER.COM](http://WWW.STACKANDBONNER.COM)

020 8974 8844

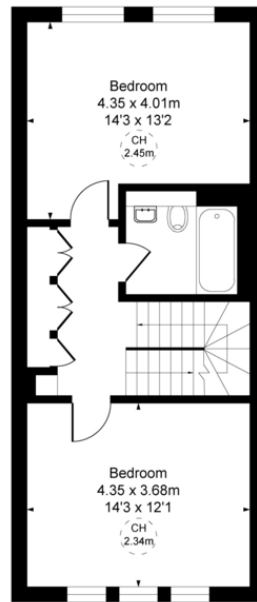
[sales@stackandbonner.com](mailto:sales@stackandbonner.com)



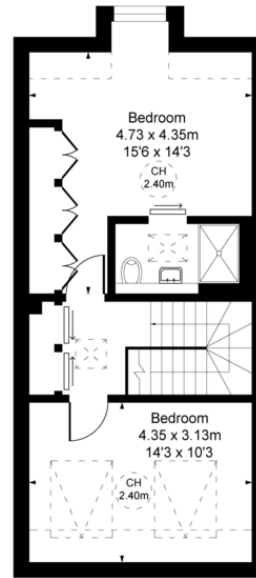
Kingsborough Place,  
Kingston Upon Thames, KT2  
Approximate Gross Internal Area  
153.04 sq m / 1647 sq ft  
(Excluding restricted height  
under 1.5m 148.60 sq m 1600 ft)  
(CH = Ceiling Heights)



Ground Floor



First Floor



Second Floor

This plan is not to scale. It is for guidance and not for valuation purposes.  
All measurements and areas are approximate only, and have been prepared in accordance with the current edition of the RICS Code of Measuring Practice.

- 4 Bedroom Town House
- 1,647 sq ft
- Built just 5 years ago
- Arranged over 3 floors
- 2 Luxury Bathrooms
- Exclusive Development
- Private Garden
- Allocated Parking
- Popular North Kingston Location
- Close to Richmond Park
- Council Tax: Band G - £4,346.87 per annum