



23, Compton Court, Repton Road, Hertford
SG14 2FW
Price Guide £350,000



stevenoates.com



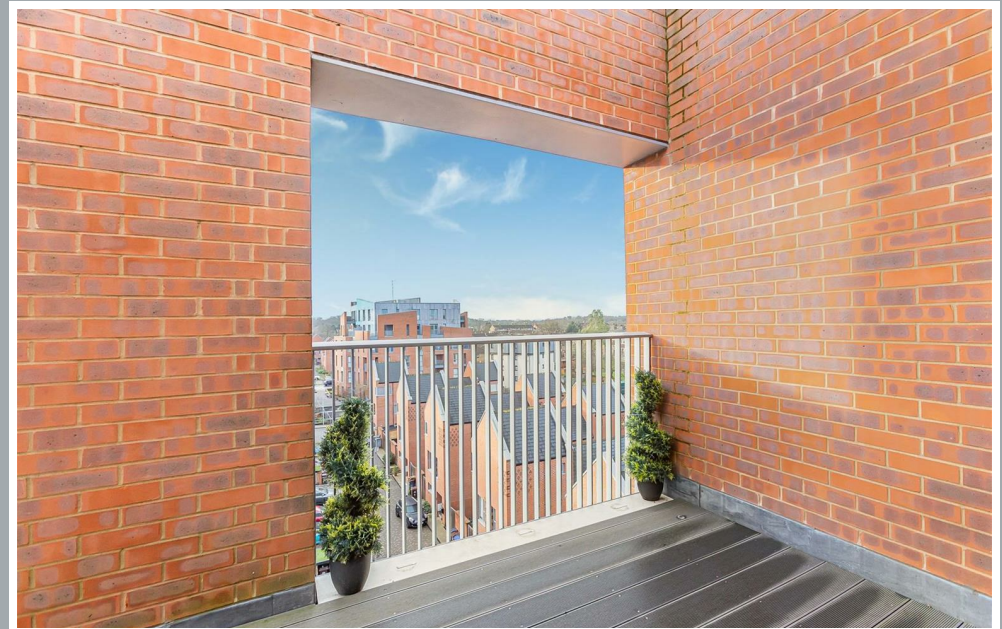
23, Compton Court Repton Road, Hertford, SG14 2FW

A fantastic opportunity to acquire a beautifully appointed two-bedroom penthouse apartment with stunning views over the picturesque Golding Manor Estate, ideally situated on the top floor of this sought-after development. This bright and airy property boasts two good size balconies, with stunning views, a perfect space to relax and unwind. Inside, the apartment features a spacious open-plan kitchen and reception area, ideal for modern living and entertaining. There are two well-proportioned bedrooms, offering comfortable and flexible accommodation, along with a contemporary family bathroom and ample storage cupboards. The property also benefits from allocated parking. With its generous layout, scenic outlook, and desirable top-floor position, this penthouse offers a unique blend of luxury and practicality. Whether you're a first-time buyer, downsizer, or investor, this is a rare opportunity not to be missed.

Compton Court forms part of this modern built complex which is positioned for easy access to local shops which are only a short stroll away including a coop, butchers and bakers. Panshanger park is only a short stroll away which offers sprawling countryside and is a popular walking destination. Hertford North train station is within easy walking distance and offers regular services to London. Hertford town centre is only a short distance away approximately (1.4m) providing an excellent choice of shops, restaurants, coffee shops, castle and theatre. Hartham Common, with the River Lea, is in close proximity and offers a wide range of indoor and outdoor leisure facilities, including a skate park and tennis court, extensive ground and woods. Also close by is a superstore and a useful industrial park.



70 Fore Street, Hertford, Hertfordshire, SG14 1BY



70 Fore Street, Hertford, Hertfordshire, SG14 1BY



70 Fore Street, Hertford, Hertfordshire, SG14 1BY



70 Fore Street, Hertford, Hertfordshire, SG14 1BY



70 Fore Street, Hertford, Hertfordshire, SG14 1BY

Approximate Area = 865 sq ft / 80.3 sq m

For identification only - Not to scale



These particulars, whilst believed to be accurate are set out as a general outline only for guidance and do not constitute any part of an offer or contract. Intending purchasers should not rely on them as statements of representation of fact, but must satisfy themselves by inspection or otherwise as to their accuracy. No person in this firm's employment has the authority to make or give any representation or warranty in respect of the property.



stevenoates.com