



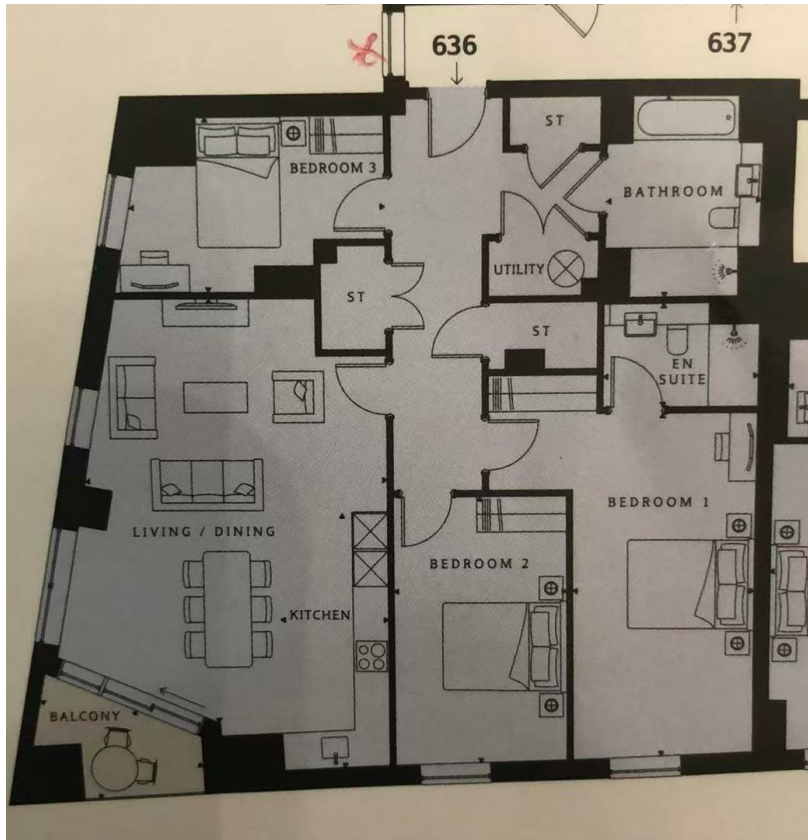
## Gladwin Tower, 50 Wandsworth Road

, London SW8 2FU

- Three-bedroom, two-bathroom apartment
- 24-hour concierge service
- Private cinema room
- Ideally positioned between Vauxhall, Nine Elms, and Battersea
- CTB-G
- Open-plan living and dining area
- Residents' gymnasium and fitness facilities
- Residents' lounge
- EPC-B

**£5,634 Per Month**

Local Authority **Lambeth**  
Council Tax Band **G**  
EPC Rating **B**



**London Office Office**

Spaces Victoria, 25 Wilton Road, Pimlico,  
London, SW1V 1LW

**Contact**

020 3084 3094  
XL@londonvictoriagroups.co.uk  
www.londonvictoriagroups.co.uk

Agents Note: Whilst every care has been taken to prepare these particulars, they are for guidance purposes only. All measurements are approximate and for general guidance purposes only and whilst every care has been taken to ensure accuracy, they should not be relied upon and potential buyers/tenants are advised to recheck the measurements.