



Patenson Court, Newton Aycliffe
Newton Aycliffe



Offers Invited Between £280,000 And £290,000



Patenson Court

Newton Aycliffe, Newton Aycliffe

Offers Invited Between £280,000 And £290,000 - This charming four-bedroom detached home occupies a desirable corner plot in the sought-after Cobbers Hall area of Newton Aycliffe.

The ground floor offers excellent practicality, featuring a convenient WC and utility room to support everyday living. The property boasts a range of versatile reception spaces, including a spacious lounge, a separate study/dining room, and a generous kitchen/diner—perfect for both entertaining guests and relaxing with family.

Upstairs, the first floor comprises a well-proportioned master bedroom with en-suite, along with three additional bedrooms and a family bathroom, providing ample accommodation for growing families.

Externally, the property benefits from substantial front and side gardens, offering fantastic outdoor space to enjoy. Whether you're looking to unwind, entertain, or design your own modern landscaped garden, the possibilities here are endless. A significant added advantage is the double garage located opposite the property.

This is a wonderful opportunity to acquire a spacious home with great potential, both inside and out. Early viewing is highly recommended—contact us today to arrange yours.

Council Tax band: E

Tenure: Freehold



Entrance Hallway

5'6" x 3'5" (1.68 x 1.06 m)

Hallway

7'11" x 3'5" (2.42 x 1.05 m)

Lounge

13'5" x 10'10" (4.09 x 3.32 m)

Study | Dining Room

10'0" x 10'9" (3.06 x 3.28 m)

Kitchen|Diner

9'11" x 20'2" (3.03 x 6.15 m)

Utility Room

6'1" x 5'2" (1.86 x 1.59 m)

Wc

3'0" x 4'6" (0.93 x 1.38 m)

Landing

8'2" x 6'3" (2.49 x 1.93 m)

Bedroom 1

11'9" x 9'8" (3.59 x 2.96 m)

En-suite

4'4" x 6'6" (1.33 x 1.99 m)

Bedroom 2

11'7" x 8'8" (3.55 x 2.66 m)

Bedroom 3

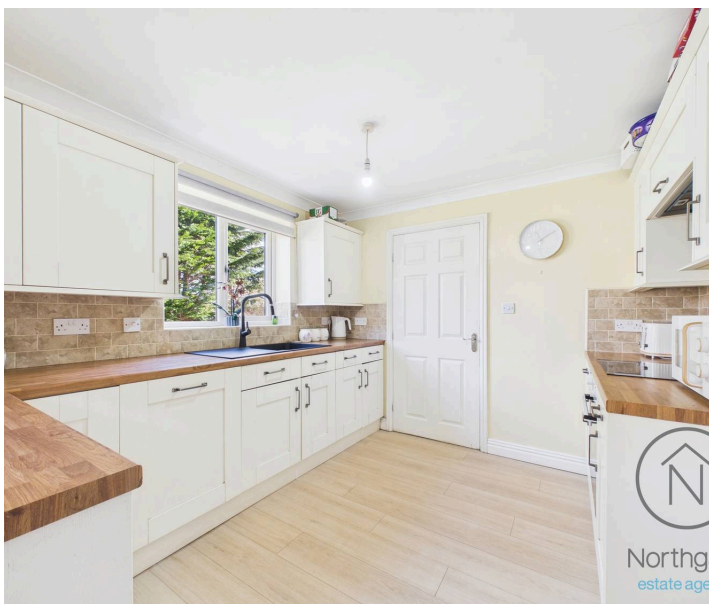
10'3" x 8'10" (3.15 x 2.71 m)

Bedroom 4

8'4" x 7'9" (2.54 x 2.37 m)

Family Bathroom

6'5" x 9'0" (1.97 x 2.77 m)





GARDEN

Large front and side gardens

REAR GARDEN

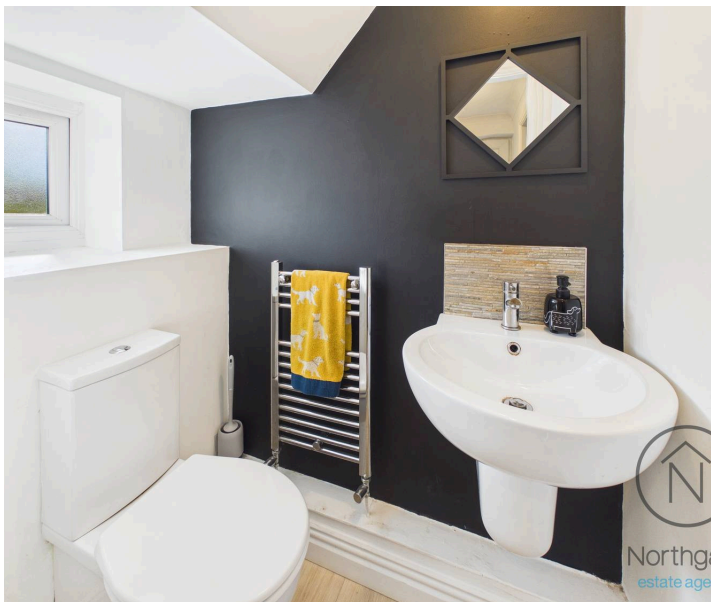
Garage

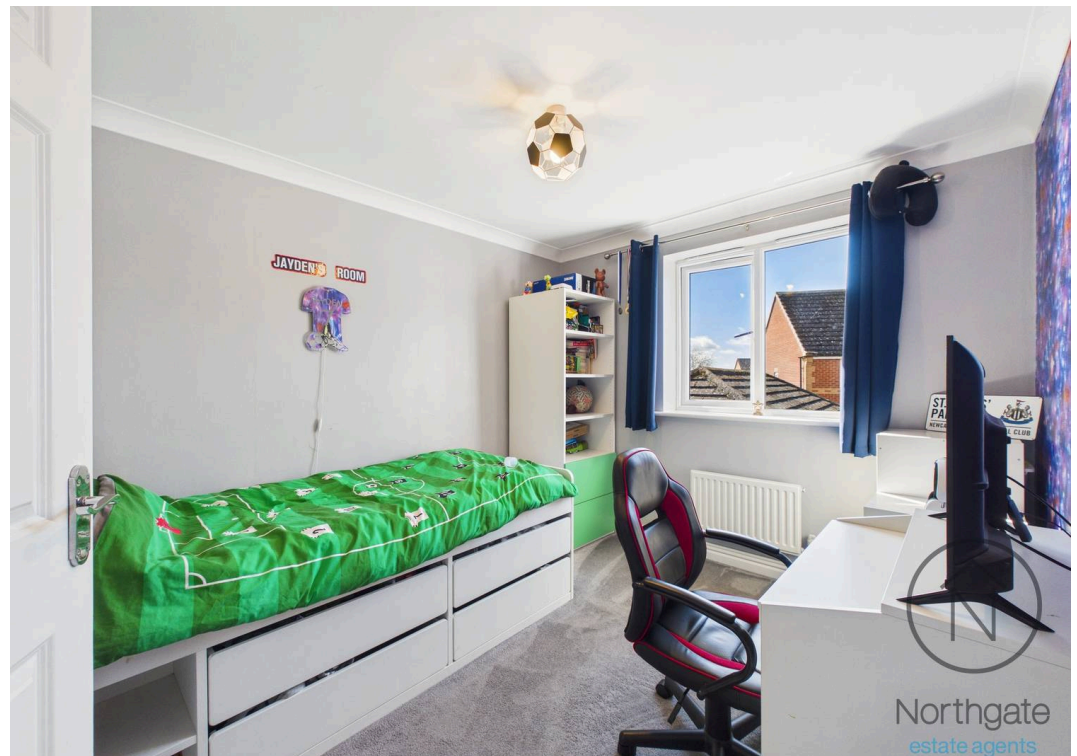
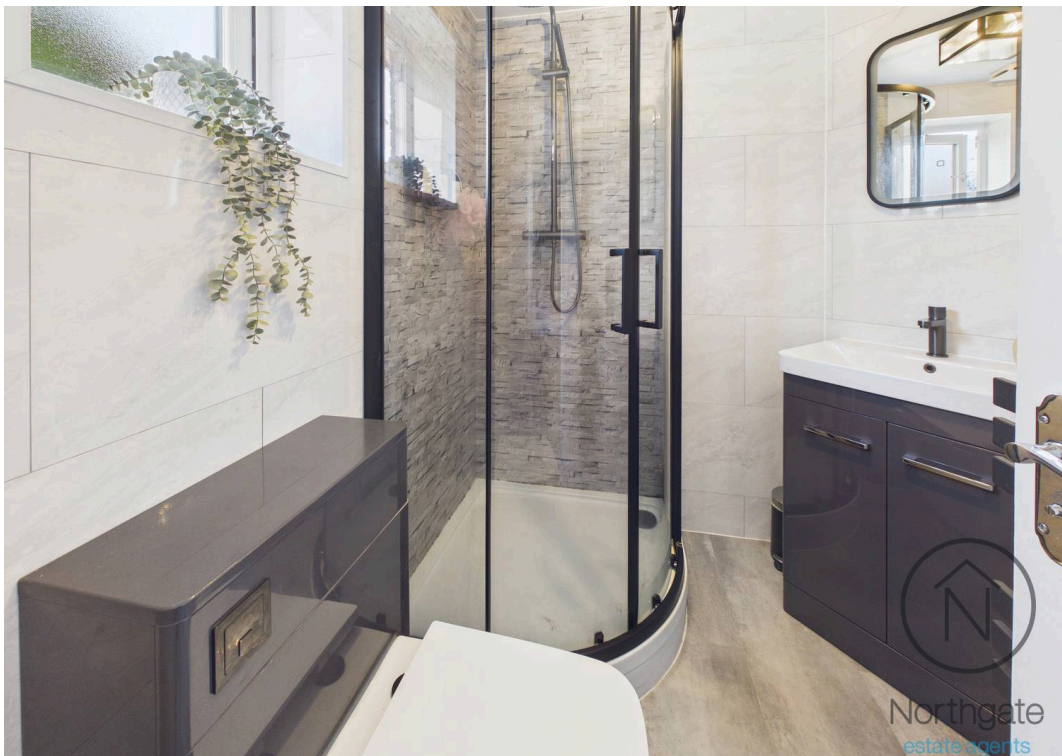
Double Garage

Driveway

2 Parking Spaces

- Four Bedroom Detached
- Corner Plot
- Ground Floor WC, Utility
- Several Reception Rooms
- Double Garage
- Energy Efficiency Rating: D

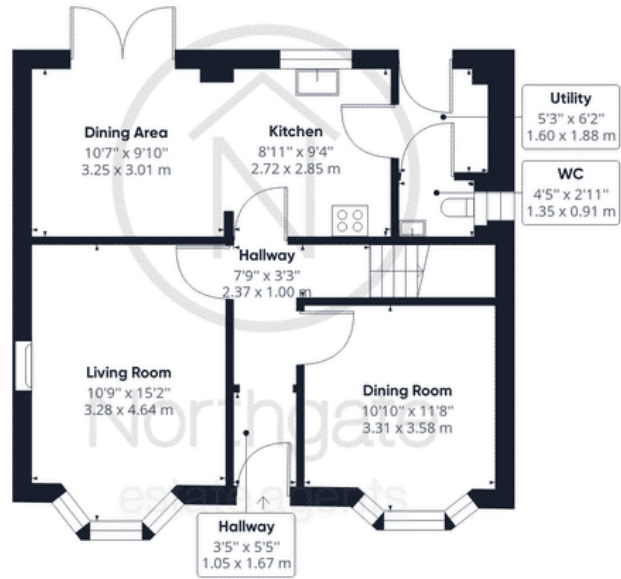




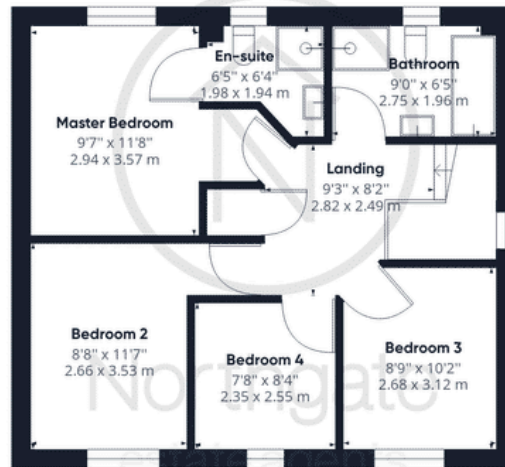




Northgate
estate agents



Ground Floor



Floor 1

Approximate total area⁽¹⁾

1181.47 ft²

109.76 m²

(1) Excluding balconies and terraces

While every attempt has been made to ensure accuracy, all measurements are approximate, not to scale. This floor plan is for illustrative purposes only.

GIRAFFE360



Northgate - County Durham

Suite 3, Avenue House, Greenwell Road, Newton Aycliffe - DL5 4DH

01325 728333 • info@northgates.net • www.northgates.co.uk/



These particulars do not constitute, nor constitute part of, an offer or contract. No warranties are provided. Verify details through inspection. Northgate estate agents, nor any person in their employment has any authority to make or give any representation or warranty whatever in the relation to this property. All measurements are approximate.