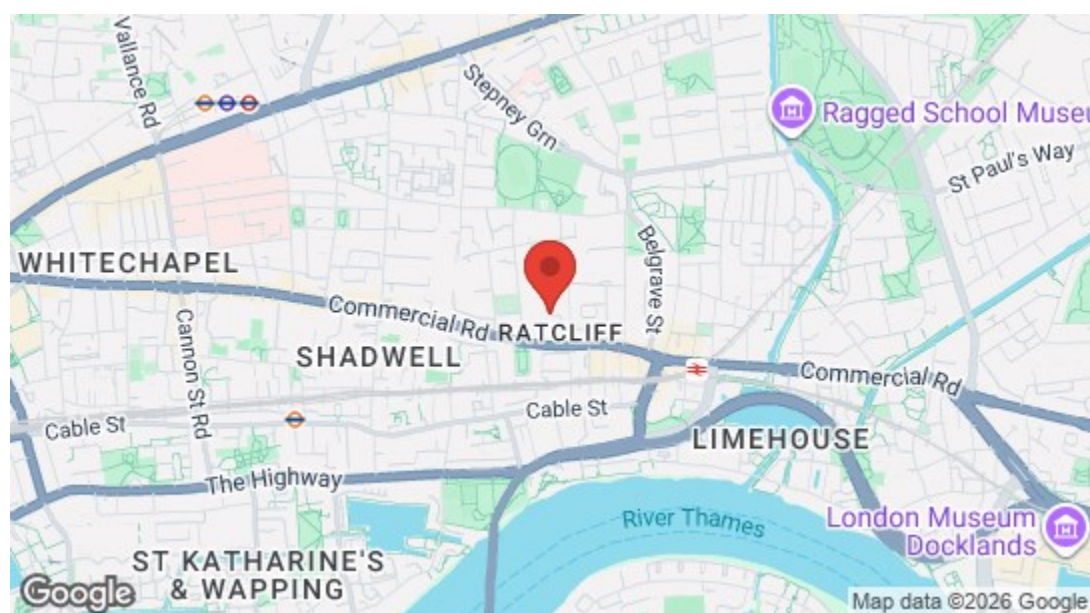
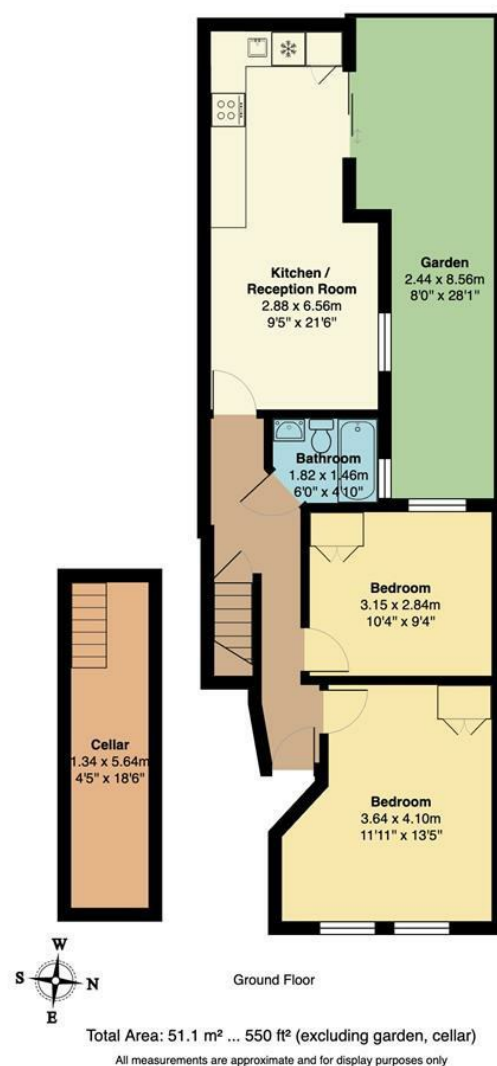




**Senrab Street, Stepney Green**  
**£2,100 Per Month**  
**2 bed, Apartment - Conversion**



Energy Efficiency Rating		
	Current	Potential
Very energy efficient - lower running costs		
(92 plus) <b>A</b>		
(81-91) <b>B</b>		
(69-80) <b>C</b>		
(55-68) <b>D</b>		
(39-54) <b>E</b>		
(21-38) <b>F</b>		
(1-20) <b>G</b>		
Not energy efficient - higher running costs		
England & Wales	EU Directive 2002/91/EC	





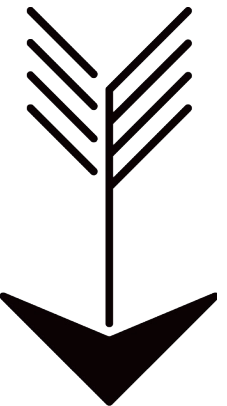
## Features

- Two Spacious Double Bedrooms
- Open-Plan Kitchen & Living Area
- Private Courtyard Garden
- Cellar For Additional Storage
- Excellent Transport Links & Close To Green Spaces



A smartly presented, two bedroom, ground floor apartment with a large, open plan, kitchen and living room, private courtyard garden and sizeable cellar. All moments from rail and tube stations, lively cultural venues and Stepney Green Park.

Limehouse station is ten minutes away on foot, where you'll find overground and DLR trains to Canning Town, Canary Wharf, Tower Gateway and Bank. Alternatively, Stepney Green station is around fifteen minutes' walk, for District or Hammersmith and City line tube connections to central London.



### WHAT ELSE?

- At the end of your street you'll find Cabin, a warm welcoming corner cafe that serves delicious breakfasts and brunches.
- Originally a 1930s art deco movie house, Troxy, on nearby Commercial Road, underwent a full restoration in 2020 and is now a breathtaking performance venue hosting a varied programme of comedy, concerts and theatre productions.
- You could be involved in an exciting Casino Heist at Escape Room London on Whitechapel Road. You'll only have to walk five minutes from your front door to take part in this daring adventure.





➤ IF YOU LIVED HERE...

Step inside for a long entrance hall that leads to your large, bright, open plan, kitchen and reception room. Sitting to the rear of your home, with 155 square feet of smooth, engineered hardwood flooring, accent lighting and a gentle, neutral colour scheme, this spacious living area also has sliding patio doors that open onto your private courtyard garden. Your kitchen comes with plenty of immaculate, cream cabinets, dark marbled work surfaces and sleek, stainless steel integrated appliances.

Back in the hallway, there's direct access to a sizeable cellar, providing handy extra storage space, while returning to the front of your home, you'll find two handsome double bedrooms, both with large bright windows and blonde hardwood flooring. The principal sleeper comes in at a generous 155 square feet. Your stylish bathroom sits between the bedrooms and living areas, all decked out with floor to ceiling white metro tiles, chrome fixtures and fittings, a heated towel rail, modern white suite and refreshing rainfall and handset showers over the tub.

Although you're centrally located, it's only a four minute walk until you're in the lush open fields of Stepney Green. In this suburban oasis you'll find an outdoor gym, sports pitches with changing rooms and Stepney City Farm nearby, where there's a fantastic Farmer's Market each Saturday, full of delicious, fresh, organic produce. You've a choice of two new locals, The George Tavern on Commercial Road or The Old Ship on Barnes Street. Both are just a ten minute walk from your new front door.

