

Property ref: 172826



Martinet Road, Reading, RG5 4TQ

£2,500 PCM



A very well presented four bedroom detached family home, well placed for local schools and amenities with easy access to business parks, M4

- Four bedrooms; Master with en-suite

motorway and on a regular bus route to and from Reading town centre.
Wokingham Borough Council tax band F.

Available 27/08/2026

- Fully fitted kitchen with appliances
- Upstairs family bathroom & downstairs W/C; Good-sized garden
- Gas central heating; EPC rating C
- Driveway and garage parking
- Furnished; Managed by HASLAMs

*Fees For Assured Periodic Tenancies: when you rent a property from us you will be required to pay a sum equivalent to one weeks' rent for a holding deposit. Upon successful application, this amount will be off set against your first months' rent. You will also be required to pay a security deposit equivalent to 5 weeks' rent which will be held and protected in line with Deposit legislation. For more information about our fees please visit: www.haslams.net
Fees for all other tenancies (Non Housing Act Tenancies / Company Lets): when you rent a property from us we will charge you a one-off fee per property. This charge is the equivalent of 15 days of the monthly rental charge (+VAT) with a minimum fee of £450 (inc.VAT) up to a maximum of £650 (inc.VAT). Other fees may apply depending on your circumstances.

0118 960 1055

lettings@haslams.net www.haslams.net

Haslams Estate Agents Ltd, 159 Friar Street, Reading, Berkshire, RG1 1HE









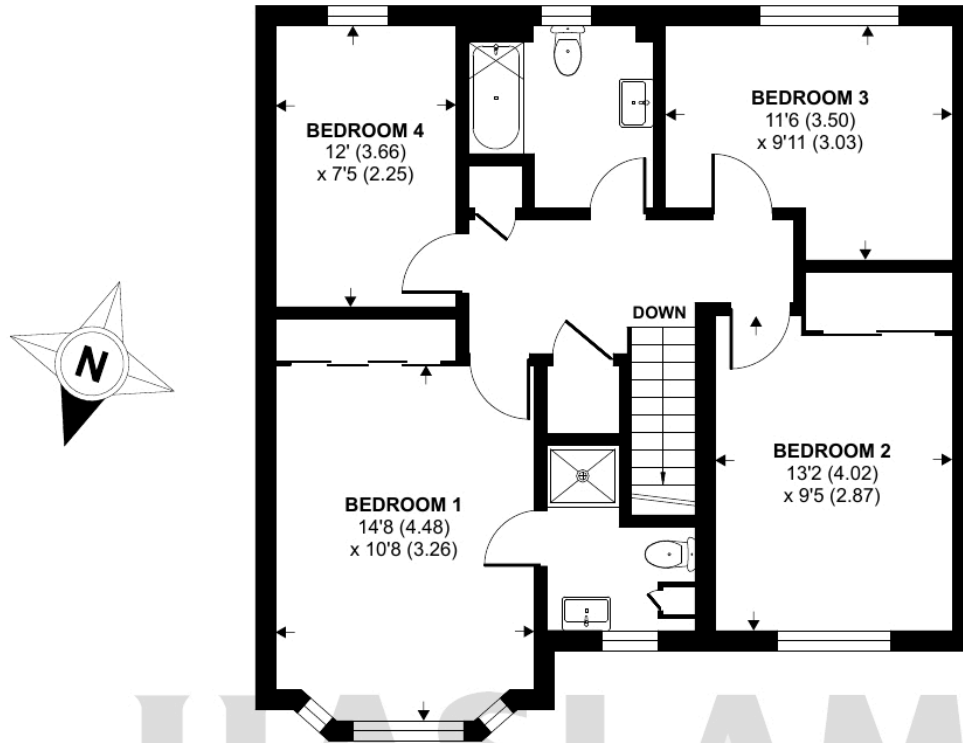
Martinet Road, Woodley, Reading, RG5

Approximate Area = 1307 sq ft / 121.4 sq m

Garage = 171 sq ft / 15.8 sq m

Total = 1478 sq ft / 137.2 sq m

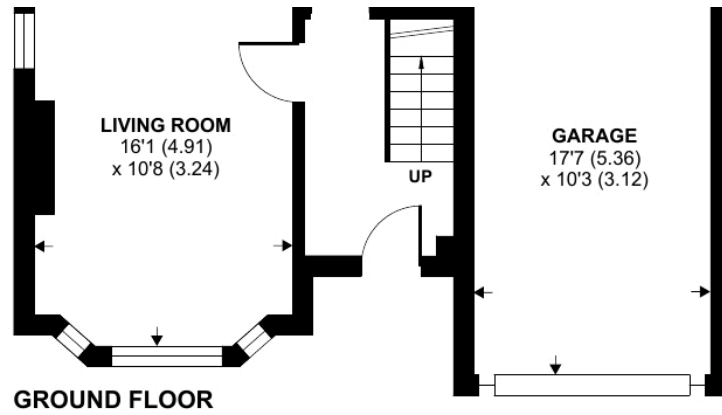
For identification only - Not to scale



FIRST FLOOR



HASLAMSS



 Floor plan produced in accordance with RICS Property Measurement 2nd Edition, Incorporating International Property Measurement Standards (IPMS2 Residential). © n7checom 2025. Produced for Haslam's. REF: 1312582