



14 Linton Road
Hove, BN3 5HF



1st floor flat, 14 Linton Road, Hove

£1,250.00 per calendar month

A newly refurbished one-bedroom first-floor flat situated in the heart of Poets Corner.

Within easy walking distance, you'll find a variety of trendy cafés, restaurants, and independent shops along the popular Portland Road.

Hove Beach is also within walking distance, while nearby transport links include Aldrington and Hove stations, offering direct rail services to Gatwick Airport and London.

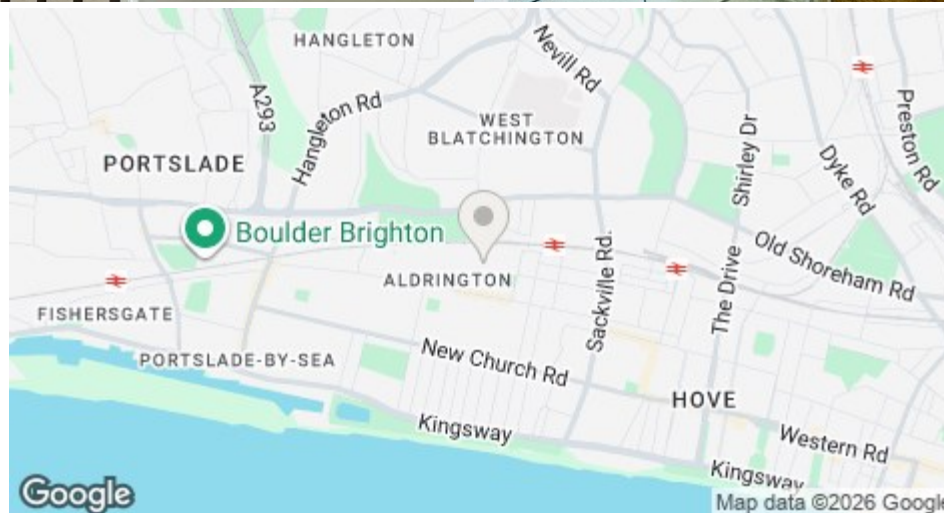
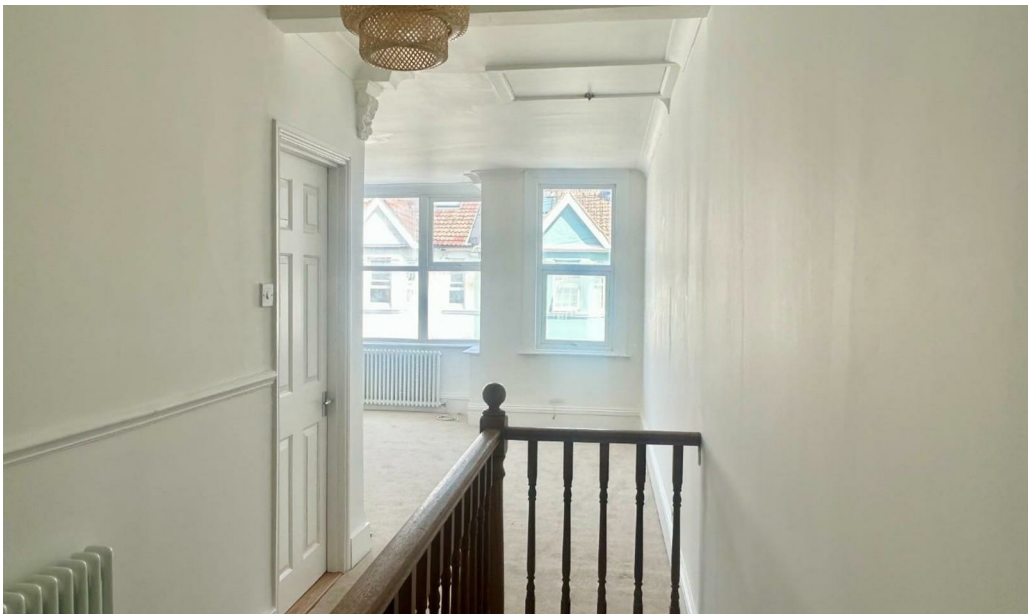
The property comprises a newly fitted kitchen with integrated appliances, a spacious living room, a generous double bedroom, and a modern shower room.

Recently renovated throughout, the flat benefits from newly fitted flooring, new boiler & radiators and fresh redecoration giving a cosy and contemporary feel.

Available for immediate occupation.

Room dimensions approx:

Living room- 14'11" x 13'04"
 Bedroom- 10'09" x 9'03"



Energy Efficiency Rating	
Current	Potential
Very energy efficient - lower running costs	
(92 plus) A	
(81-91) B	
(69-80) C	
(55-68) D	
(39-54) E	
(21-38) F	
(1-20) G	
Not energy efficient - higher running costs	
	77
	60

Environmental Impact (CO ₂) Rating	
Current	Potential
Very environmentally friendly - lower CO ₂ emissions	
(92 plus) A	
(81-91) B	
(69-80) C	
(55-68) D	
(39-54) E	
(21-38) F	
(1-20) G	
Not environmentally friendly - higher CO ₂ emissions	

Pearson
Keehan