



HOUSE - TOWNHOUSE

Bingley Court Canterbury City Centre Canterbury CT1 2SW

£2,200 Per Month

PREMIUM STUDENT HOUSE

FIVE DOUBLE BEDROOMS

TWO BALCONIES

TWO BATHROOMS

HIGH SPEED INTERNET

BILLS PACKAGE AVAILABLE

FULLY FURNISHED

PERFECT FOR PROFESSIONAL SHARERS OR STUDENTS

AVAILABLE NOW

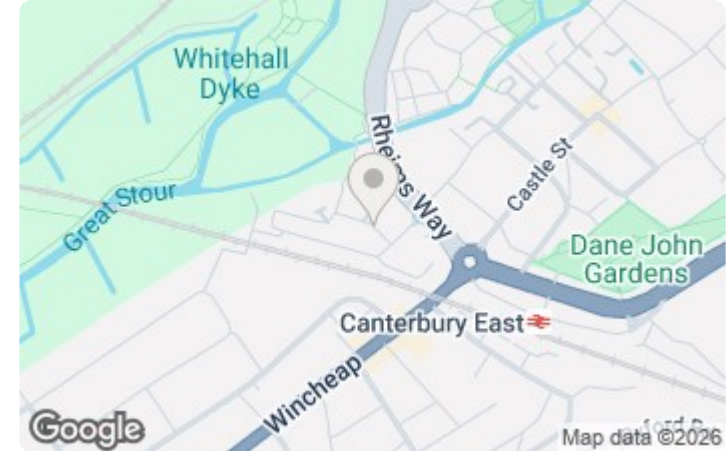


absolute living

5 BED HOUSE - TOWNHOUSE LOCATED IN CANTERBURY

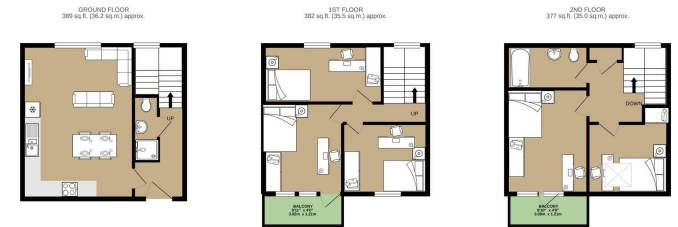
BINGLEY COURT CT1. - CALL 07960 777543. Price is per person per month for a whole group of 5. Five bedroom house over three floors with two bathrooms. All the bedrooms are of an equal size and two bedrooms benefit from private balconies. On the ground floor there is a spacious fully equipped kitchen/ reception. Located 30 secs from Aldi and an 8 minute walk into the centre of Canterbury whilst being close for the Unibus and St Augustines. This is a posh student house, the photos don't show wardrobes/ desks and chest of drawers but these will be provided. High speed wifi and fully refurbished in 2023 this home is waiting for your group. Available Now for a 12

Call us on
020 3002 9002
hello@absoluteliving.co.uk



Full Description

Modern open plan kitchen/ reception with large fridge/ freezer, washer dryer and dishwasher. Available Now, bills package available. The house is modern; bills package available to cover Gas, Electricity, Water, Waste Water, High Speed Internet and TV Licence - please email or call to discuss. canterbury@absoluteliving.co.uk.



TOTAL FLOOR AREA: 1148 sq ft (106.7 sq m) approx.
While every attempt has been made to ensure the accuracy of the floor plan contained here, measurements of actual buildings, rooms and any other detail are approximate and are not necessarily related to any actual dimensions or measurements. This plan is for illustrative purposes only and should be used as such by any prospective purchaser. The accuracy of the floor plan and any other detail is not guaranteed.
Made with Merge3D (2020)

Energy Efficiency Rating	Current	Potential	Environmental Impact (CO ₂) Rating	Current	Potential
Very energy efficient - lower running costs			Very environmentally friendly - lower CO ₂ emissions		
(92 plus) A			(92 plus) A		
(81-91) B			(81-91) B		
(69-80) C			(69-80) C		
(55-68) D			(55-68) D		
(39-54) E			(39-54) E		
(21-38) F			(21-38) F		
(1-20) G			(1-20) G		
Not energy efficient - higher running costs			Not environmentally friendly - higher CO ₂ emissions		
England & Wales	EU Directive 2002/91/EC		England & Wales	EU Directive 2002/91/EC	

Agents Note: Whilst every care has been taken to prepare these particulars, they are for guidance purposes only. All measurements are approximate and are for general guidance purposes only and whilst every care has been taken to ensure their accuracy, they should not be relied upon and potential buyers are advised to recheck the measurements.

absolute living