



Masefield Road, £325,000

- COUNCIL TAX BAND - D
- OFF ROAD PARKING FOR MULTIPLE VEHICLES
- CLOSE TO LOCAL AMENITIES; SHOPS, PARKS, TRANSPORT LINKS
- 3 BEDROOM SEMI-DETACHED HOME
- SEPERATE LOUNGE & DINING ROOM
- UTILITY AND W.C TO OUTHOUSES
- EPC Rating: D



 3  2  3



About the property

3 BEDROOMS - SEMI-DETACHED FAMILY HOME - OFF ROAD PARKING. CLOSE TO; PENARTH MARINA, COGAN TRAIN STATION, COGAN PRIMARY SCHOOL, ST CYRES, TESCO SUPERMARKET.

Comprising of entrance hallway, lounge, kitchen, dining room, utility room and w/c to outhouses accessed via kitchen, landing, family bathroom, 3 bedrooms, driveway to front for multiple vehicles, enclosed rear garden.

Penarth is a vibrant and exciting place to live work and play with a population of just over 22,000. With five primary schools and two secondary schools, it is a popular place to raise a family. It boasts a thriving town centre offers a variety of shops, delicatessens, and organic food within the beautiful Victorian arcade. Similarly, the town offers stunning listed buildings and structures of special local and historic interest that contributes to the environment and cultural heritage of Penarth. As well as shopping you can find plenty of outdoor areas such as the beach, Esplanade, Clifftops, railway path and Cosmeston Lakes and country Park. Providing lots of options for family activities walkers and joggers. Local rugby, football, hockey and cricket clubs also contribute to the active community . Penarth also lies approximately 4 miles from Cardiff city centre thanks to the excellent transport links by rail and by bus. The Cardiff Bay barrage offers a safe, traffic free route for much of the way for those wishing to cycle, scooter, or walk.



Accommodation

Lounge

13' 6" x 11' 9" + bay (4.11m x 3.58m + bay)

Dining Room

10' 9" x 9' 5" (3.28m x 2.87m)

Kitcehn

19' 10" x 9' 9" (6.05m x 2.97m)

Bedroom 1

9' 4" x 13' 7" (2.84m x 4.14m)

Bedroom 2

10' 9" x 12' 6" (3.28m x 3.81m)

Bedroom 3

8' 10" x 8' 5" (2.69m x 2.57m)

Bathroom

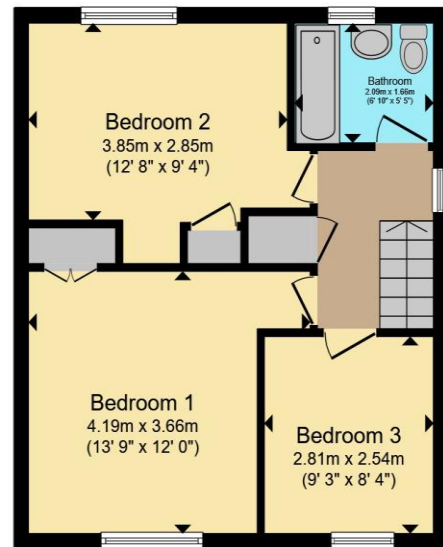
02920 703799

penarth@peteralan.co.uk

Floorplan



Ground Floor



First Floor

Total floor area 99.6 m² (1,072 sq.ft.) approx

This floor plan is for illustrative purposes only. It is not drawn to scale. Any measurements, floor areas (including any total floor area), openings and orientation are approximate. No details are guaranteed, they cannot be relied upon for any purpose and they do not form part of any agreement. No liability is taken for any error, omission or misstatement. A party must rely upon its own inspection(s). Powered by www.propertybox.io



Important Information

Note while we endeavour to make our sales details accurate and reliable, if there is any point which is of particular interest to you, please contact the office and we will be pleased to confirm the position for you. We have not personally tested any apparatus, equipment, fixtures, fittings or services and cannot verify they are in working order or fit for their purposes. Nothing in these particulars is intended to indicate that carpets or curtains, furnishings or fittings, electrical goods (whether wired or not). Gas fires or light fittings or any other fixtures not expressly included form part of the property offered for sale. This computer generated Floorplan, if applicable, is intended as a general guide to the layout and design of the property. It is not to scale and should not be relied upon for dimensions. Tenure: We cannot confirm the tenure of the property as we have not had access to the legal documents. The buyer is advised to obtain verification from their solicitor or surveyor.

Peter Alan Limited is registered in England and Wales under company number 2073153, Registered Office is Cumbria House, 16-20 Hockliffe Street, Leighton Buzzard, Bedfordshire, LU7 1GN. VAT Registration Number is 500 2481 05. For activities relating to regulated mortgages and non-investment insurance contracts, Peter Alan Limited is an appointed representative of Connells Limited which is authorised and regulated by the Financial Conduct Authority. Connells Limited's Financial Services Register number is 302221. Most buy-to-let

