



**MILES ESTATE AGENTS**

**10 Wheatstones Bishops Lydeard  
Taunton TA4 3NS £265,000**



A lovely, modernised 3 bedroom semi detached house, peacefully situated with pedestrianised frontage in the heart of this ever popular Quantock village within Kingsmead catchment area 6 miles North West of Taunton. Well presented accommodation including refitted kitchen/dining room and bathroom. Pretty, enclosed landscaped garden, single garage and off road parking. Early viewing highly recommended. Freehold Council Tax Band C EPC : C.





Features:

- Entrance hall
- Spacious sitting room
- Good size refitted kitchen/dining room
- 3 bedrooms
- Refitted family bathroom
- Lovely enclosed landscaped garden
- Single garage & off road parking
- Freehold
- Council Tax Band C
- EPC : C

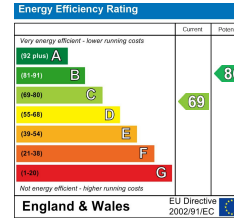
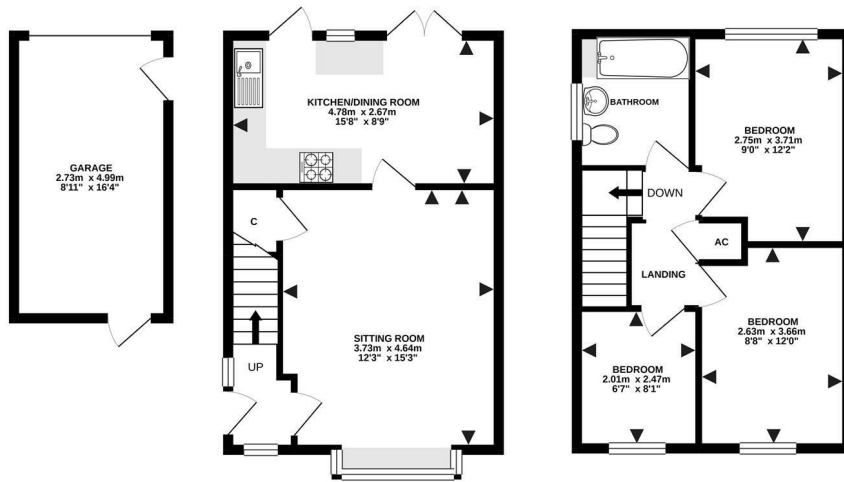


GROUND FLOOR

49.5 sq.m. (535 sq.ft.) approx.

1ST FLOOR

55.0 sq.m. (590 sq.ft.) approx.



TOTAL FLOOR AREA: 84.5 sq.m. (909 sq.ft.) approx.  
Made with Metropix ©2021.



Viewings strictly through the selling agents:

**Miles Estate Agents**

2 Piffin Lane, Bishops Lydeard, Taunton, Somerset, TA4 3AS

Tel: 01823 470 500

lydeard@milesestateagents.co.uk

www.milesestateagents.co.uk



**rightmove** 

**OnTheMarket.com** 

**MILES ESTATE AGENTS**

**BEST**  
ESTATE AGENT GUIDE  
2019 : EXCEPTIONAL  
SALES