

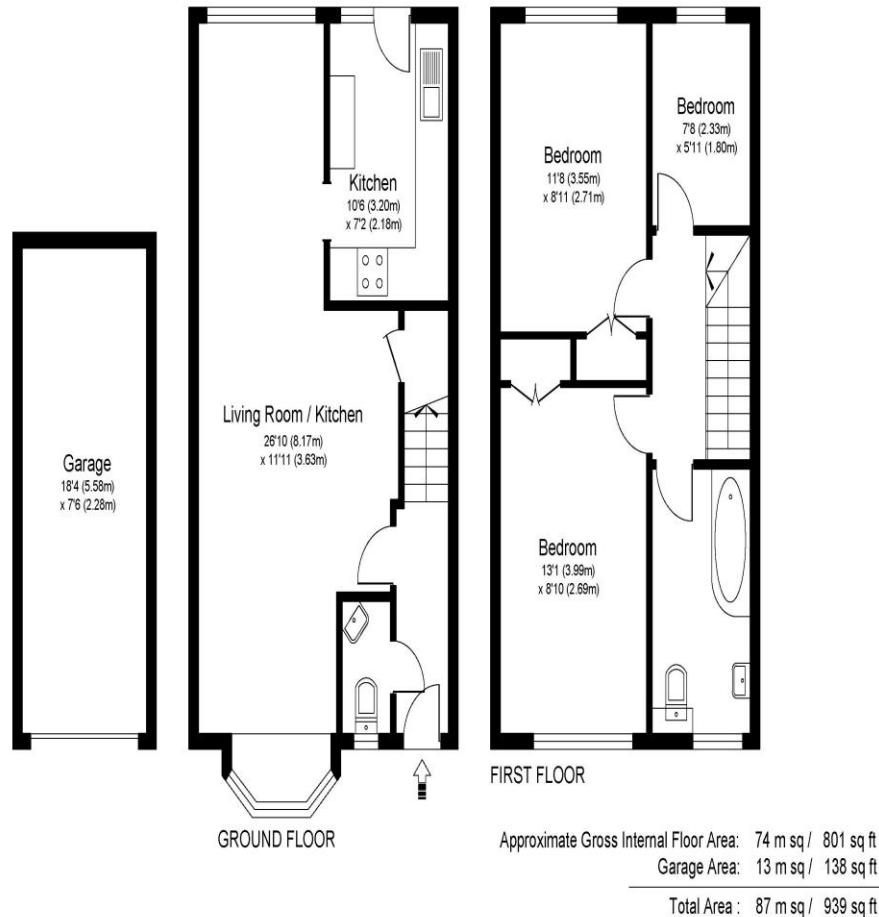


**15 Rembrandt Way Walton-On-Thames Surrey KT12 3SH**

**£2,200 pcm + Initial deposit**



## REMBRANDT WAY KT12



Whilst every attempt has been made to ensure the accuracy of the floor plan contained here, measurements of doors, windows and rooms are approximate and no responsibility is taken for any error, omission or misstatements. These plans are not to scale and are for representation purposes only as defined by RICS Code of Measuring Practice and should be used as such by any prospective purchaser. Specifically no guarantee is given on total square footage of the property if quoted on this plan. Any figure given is for initial guidance only and should not be relied on as a basis of valuation.

A three-bedroom end of terrace home set in this cul-de-sac location close to shops and the train station. Offering allocated parking and a garage. Internally this is a lovely home offered in good condition with a modern kitchen and bathroom, plus downstairs cloakroom. There is gas central heating and double glazing. There are three bedrooms and plenty of storage on offer including a loft space. The main living area downstairs is open plan with the kitchen offset but there is plenty of room to work with. The rear garden is well-designed to give a usable but low maintenance area. Within the close you have an allocated parking space and a garage in a close by block. Nicely located within Walton-on-Thames, close to the Halfway shopping facilities and within good proximity of Walton train station which offers a fast train service into London Waterloo. A popular spot also for local schools with a range of options within the area. Unfurnished. EPC Rating C. Available 25th March 2026.





**AGENTS NOTES:** These details do not constitute any part of an offer or contract. In issuing them we do not have any authority to give any warranty or representation whatsoever in respect of this property. These details are provided without any responsibility on our part or the part of the vendors. No statements in these details are to be relied upon as representations of fact and purchasers should satisfy themselves by inspection or otherwise as to the accuracy of the statements contained therein.

**Equipment:** We have not tested the equipment or central heating system mentioned in these particulars and purchasers are advised to satisfy themselves as to their working order and condition.

**Measurements:** Great care is taken when measuring but measurements should not be relied upon for ordering carpets, equipment, etc.