



## Elms Crescent, SW4

£8,500 Per calendar month

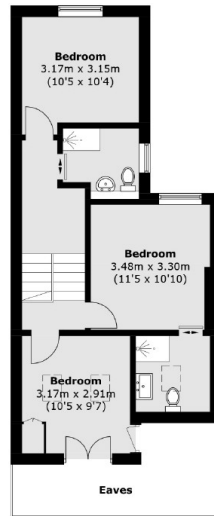
An impressive 2,313 sq. ft of living space across three floors, this exceptional five bedroom, four bathroom family home has been recently refurbished throughout to a high specification.

Situated within Abbeville Village, a highly desirable area renowned for its array of shops, restaurants and bars. Falling within the catchment of Bonneville Primary School and is within walking distance of Clapham Common.

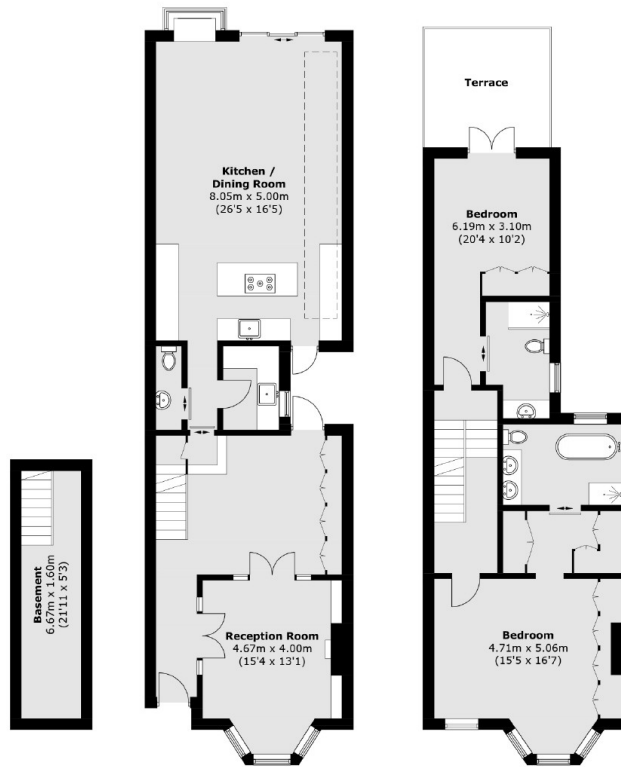
### Features

- Five Bedrooms
- Double Reception Room
- Stylish Eat-In Kitchen
- High Specification
- Landscape Garden
- Private Roof Terrace

# Elms Crescent, London, SW4



Second Floor



Basement

Ground Floor

First Floor

Total area (approx.): 210.9 sq. m (2,270.1 sq. ft)  
(Including Basement / Excluding Eaves)  
Terrace: 10.7 sq. m (115.2 sq. ft)