



Granite Apartments, 30 River Gardens Walk, Greenwich SE10 0GB



Granite Apartments, Greenwich SE10

Leasehold (983 years remaining)

A superbly finished apartment on the top floor located in the prestigious River Gardens development which benefits from easy access to London's main transport systems and benefits from on-site gym, swimming pool and tennis court.

Key Features

- 2 Double bedrooms, 2 Bathrooms
- 24-Hour concierge services
- Allocated parking
- Council Tax: **D**
- Service Charge: **£5,473.56**
- Ground Rent: **£400**
- Stunning river views
- EPC: **B**

The property accommodation comprises large entrance hall with built in cupboards and doors to all rooms. A great sized open plan kitchen / dining and reception room (28'1 sq ft x 13.5 sq ft) which accesses the full length private balcony through sliding patio doors offers fantastic river views across to Canary Wharf. The kitchen is modern high gloss, high specification with integrated appliances. Two double bedrooms, master with en-suite bathroom and built in wardrobes. There is a family shower room that finishes off the property.

The River Gardens Development is Greenwich's premier development, offering residents access to gym facilities, as well as a swimming pool, tennis courts & concierge services. Residents of Granite Apartments also have the added benefit of a storage cage and allocated underground parking.

A short walk along the Thames Path provides excellent options for nights out with friends or dining options, including the popular Enderby House just on the front of the Enderby Wharf development close by, the Cutty Sark pub, Midpoint Restaurant and Trafalgar Tavern to name just a few.









Granite Apartments

Approximate Gross Internal Area = 83.72 sq m / 901.15 sq ft

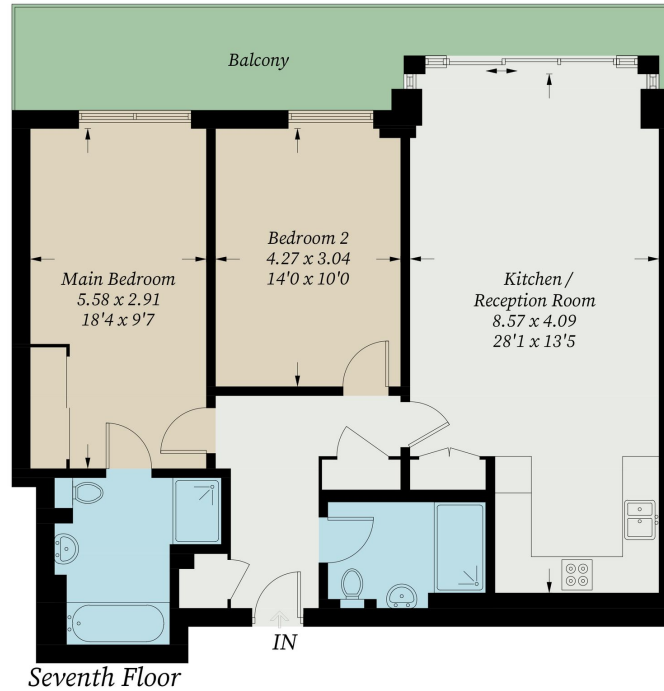


Illustration for identification purposes only, measurements are approximate, not to scale. Fourlabs.co © (ID1294699)