

## Gloucester Road, SW7

£692 Per week

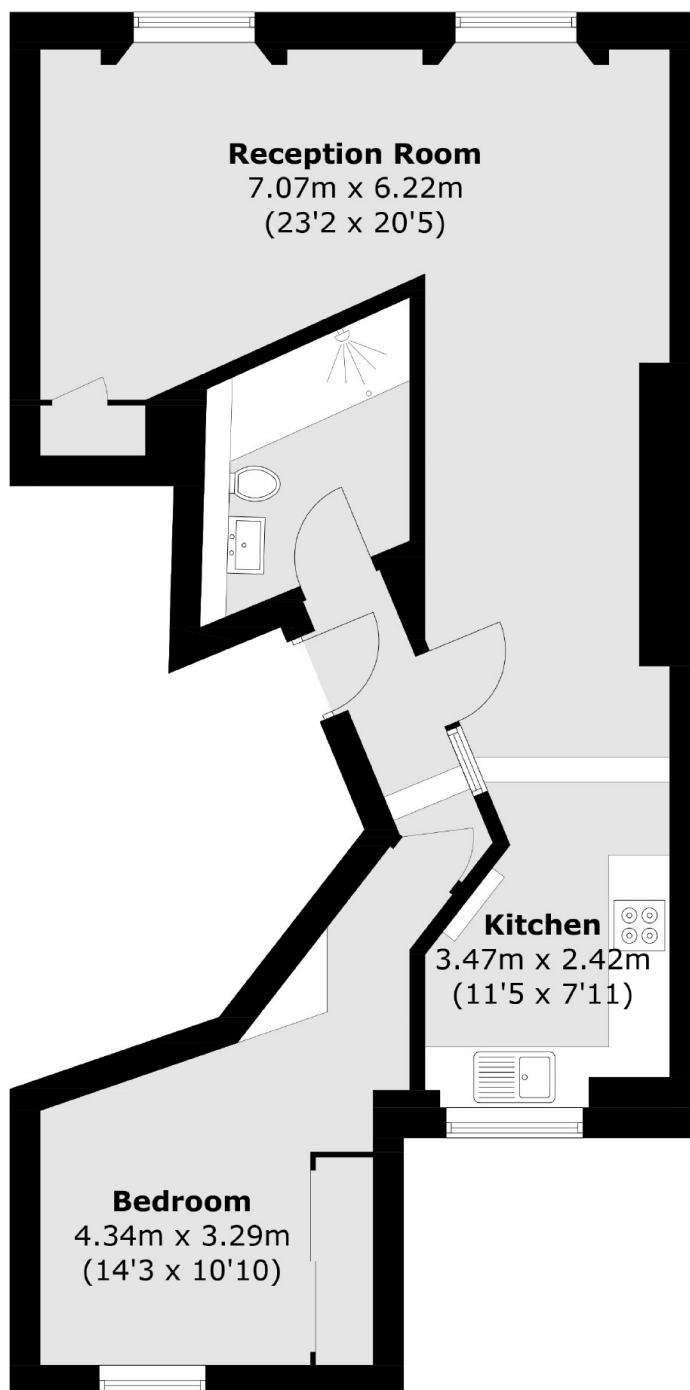
This well-presented one bedroom apartment is set on the second floor of a well-maintained building with lift access, moments from Hyde Park and Gloucester Road. Recently refurbished, it offers a bright open plan layout with a modern kitchen, ample storage, and quality finishes throughout.

The property is ideally located on Gloucester Road, offering excellent transport links via the Piccadilly, District, and Circle Lines. A wide selection of local shops, restaurants, and bars are close by, while Kensington Gardens, Hyde Park, and Kensington High Street are all within short walking distance.

### Features

- One Bedroom
- Excellent Location
- Lift Access
- Close To Hyde Park
- Wooden Floors

# Gloucester Road, London, SW7



Total area (approx.): 58.1 sq. m (625.4 sq. ft)