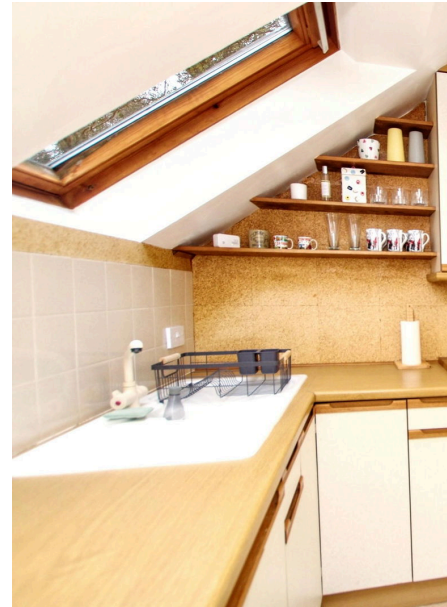




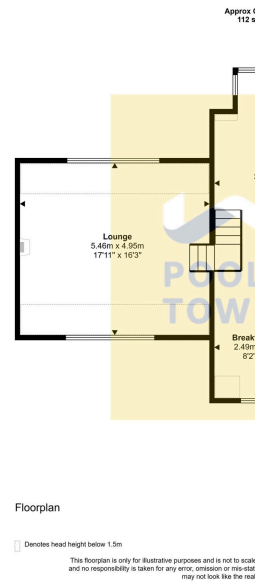
# High Park House, Oxenholme, Kendal, LA9 7RE

£249,000



- Flat
- 2 Bathrooms
- Private Garage
- Elegant Woodland-Style Garden
- Council Tax Band: D
- 2 Double Bedrooms
- 2 Reception Rooms
- Resident's Parking
- Delightful Woodland Setting
- Tenure: Leasehold





Beautifully situated on the outskirts of Oxenholme, this purpose built apartment nestles in a delightful woodland setting that is accessed along a private tree-lined road. The overall appeal of the property's location and accommodation will appeal to many buyers, whether it be for a permanent home or a holiday retreat. The first floor property features a spacious, open plan reception room for dining with further space for a desk/study area. There is direct access into the adjacent kitchen and a short run of steps ascending into the double aspect lounge. The two bedrooms are both double rooms with one benefitting from an en-suite shower room. The main bathroom is central to the whole accommodation for easy access. There is a private garage, residents parking and an elevated, woodland style garden with BBQ area and distant views. No upper chain.

