



Allum Grove, Tadworth

Guide Price **£575,000**



Allum Grove

Tadworth

Modern three-bedroom detached home with spacious interiors, study, stylish kitchen/breakfast, large garden, off-street parking, and easy access to shops, amenities, and Tadworth Station. Early viewing recommended!

Council Tax band: D

Tenure: Freehold

EPC Energy Efficiency Rating: C

EPC Environmental Impact Rating: G

- Modern Detached
- Spacious Contemporary Kitchen/Breakfast Room
- Bright Reception
- Study
- Three Double Bedrooms
- Modern Bathroom
- Generous Well Maintained Garden
- Off Street Parking
- Close to Local Shops & Amenities
- Easy Reach Of Tadworth Station



This beautifully presented three-bedroom detached home combines modern style with practical family living.

Located in a sought-after residential area, the property offers a contemporary layout with well-designed interiors throughout. The spacious kitchen/breakfast room features sleek fitted units and integrated appliances, creating the perfect setting for both everyday dining and entertaining. A bright and welcoming reception room provides plenty of space to relax, while a separate study offers an ideal environment for home working or hobbies. Upstairs, the property offers three generously proportioned double bedrooms, with the principal bedroom benefiting from fitted wardrobes, all complemented by a stylish contemporary bathroom finished to a high standard with quality fixtures and fittings.

Externally, the property enjoys a generous, well-maintained garden, ideal for outdoor dining, children's play, or simply unwinding in the fresh air. The garden includes a patio area, a neatly kept lawn, and mature shrubs and flower beds, providing a peaceful and private outdoor space.

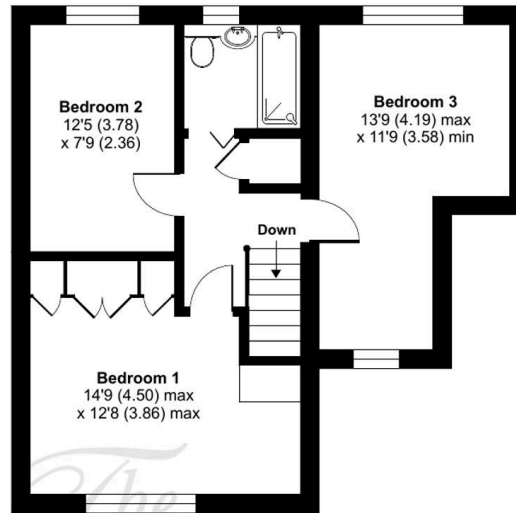
Further benefits include off-street parking and a convenient location close to local shops and amenities. Tadworth Station is also within easy reach, making the property particularly appealing to commuters and families.

Early viewing is highly recommended.

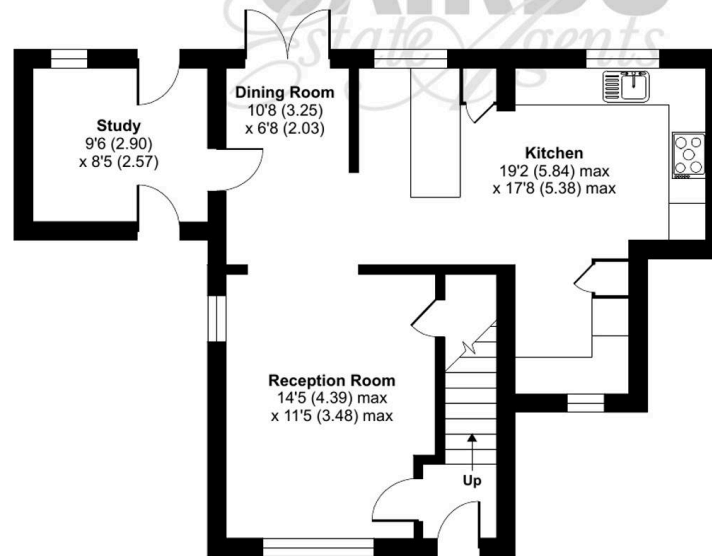
Allum Grove, Tadworth, KT20

Approximate Area = 1166 sq ft / 108.3 sq m

For identification only - Not to scale



FIRST FLOOR



GROUND FLOOR





Cairds The Estate Agents

Cairds The Estate Agents, 128-130 High Street - KT19 8BT

01372 743033 • homes@cairds.co.uk • www.cairds.co.uk