



Flat 4

Telford Avenue | | London | SW2 4XE

£1,200 Per Month



Flat 4

Telford Avenue |
London | SW2 4XE
£1,200 Per Month

Welcome to this charming studio apartment located on Telford Avenue in the desirable area of Streatham Hill, SW2 4XE. This newly refurbished property offers a comfortable living space, perfect for an individual seeking a modern and convenient home.

Situated on the first floor, the studio boasts a bright and airy atmosphere, enhanced by its well-thought-out design and laminated flooring. The property benefits from regulated heating and water rates being included in the rent.

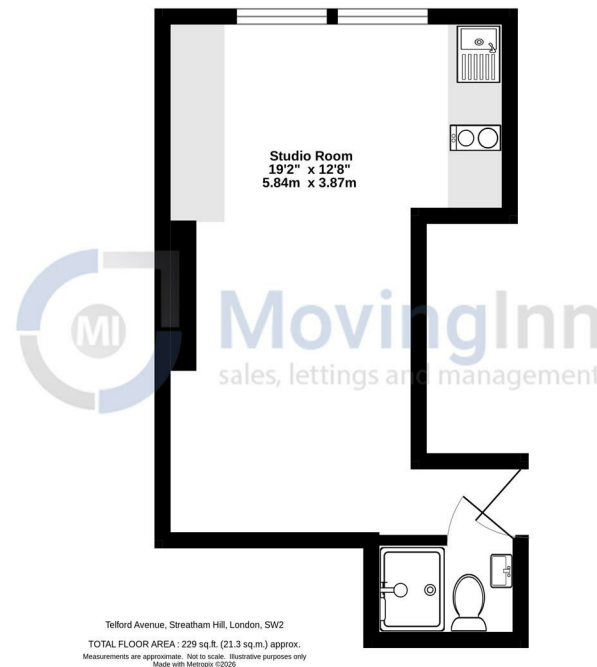
The excellent location of this studio makes it an ideal choice for those who appreciate easy access to local amenities and transport links. Whether you are commuting to work or exploring the vibrant surroundings, you will find everything you need within reach.

Available immediately, this studio apartment presents a fantastic opportunity for anyone looking to settle in a lively and welcoming community. Do not miss the chance to make this delightful space your new home.

- Newly refurbished studio
- Laminated flooring throughout
- Water rates included
- Excellent location
- Close to transport links
- 1st floor, bright and airy
- Regulated heating included
- Available immediately
- Ideal for an individual
- Viewing recommended



First Floor
229 sq.ft. (21.3 sq.m.) approx.



Telford Avenue, Streatham Hill, London, SW2
TOTAL FLOOR AREA: 229 sq.ft. (21.3 sq.m.) approx.
Measurements are approximate. Not to scale. Illustrative purposes only.
Made with Metropix ©2020

Energy Efficiency Rating		
	Current	Potential
Very energy efficient - lower running costs		
(92 plus) A		
(81-91) B		
(69-80) C	79	80
(55-68) D		
(39-54) E		
(21-38) F		
(1-20) G		
Not energy efficient - higher running costs		
England & Wales		
EU Directive 2002/91/EC		

Council Tax Band B
EPC Rating C

467 Norwood Road
West Norwood
London
SE27 9DJ
02087610830
dean@movinginn.co.uk
www.movinginn.co.uk