



Haven Green, W5

£750,000

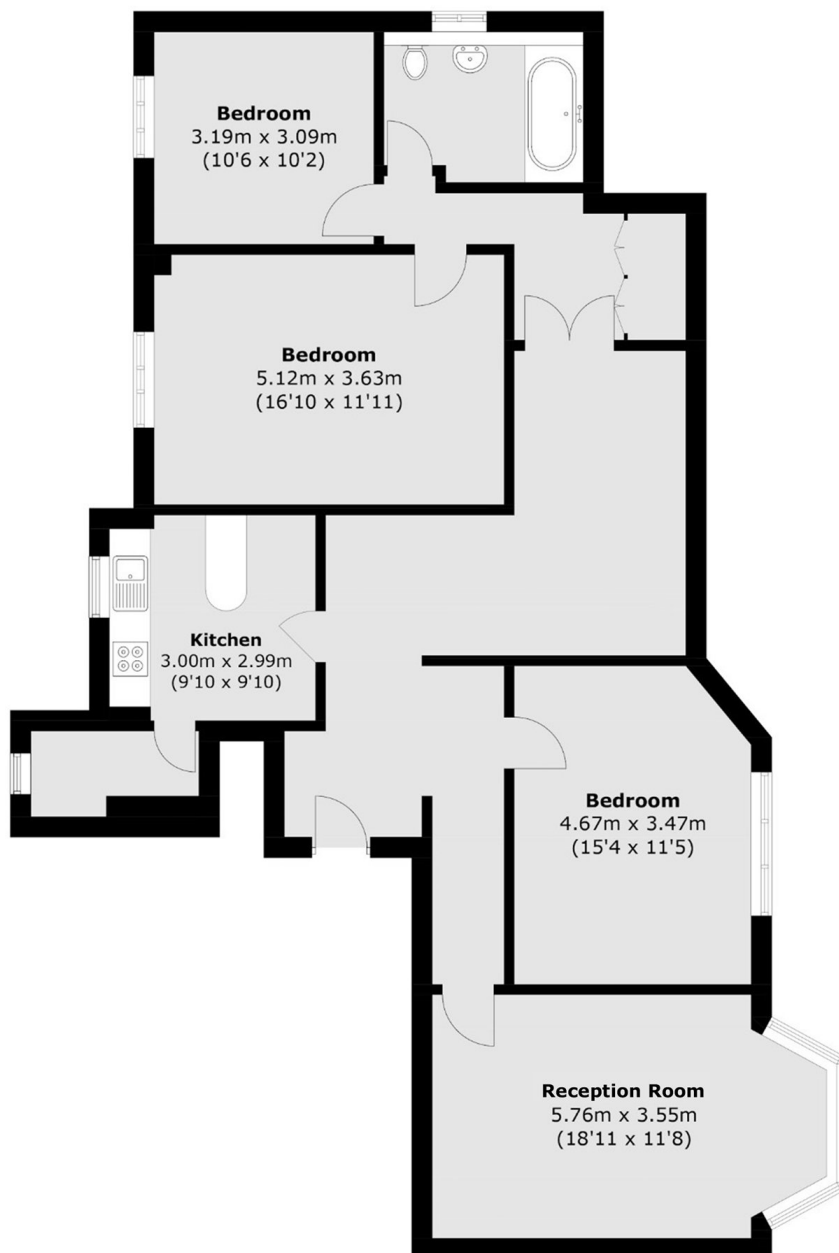
An exceptional three bedroom, second-floor apartment with lift access in one of Ealing's most sought after developments. Offering three well proportioned bedrooms, private parking and extending to just under 1,300 sqft this extensive apartment would benefit from modernisation but has all the potential to make an incredible family home. Offered to the market with no onward chain and located moments away from the expanse of Haven Green, the convenience of Ealing Broadway station and many of the area's highly regarded schools, early viewing is highly recommended.

Haven Green Court is in central Ealing, just a couple hundred yards from Ealing Broadway Station (Elizabeth Line, Central Line, District Line).

Features

- Three Bedrooms
- Second Floor
- Lift Access
- Close to Transport
- Excellent Schools
- No Onward Chain
- Central Ealing

Haven Green, London, W5



Total area (approx.): 120.4 sq. m (1,296.0 sq. ft)