

HS HAIR & SON



Ramuz Drive , Westcliff-on-Sea SS0 9JL

- VACANT 3/4 BEDROOM HOME
- DOUBLE GLAZING & GAS HEATING
- RE FITTED KITCHEN & BATHROOM
- NEW FLOORINGS & CARPETS
 - NO ONWARD CHAIN
- NEWLY REFURBISHED
- THREE LARGE BEDROOMS
 - BRIGHT & AIRY
 - PRICED TO SELL
- GARDEN WITH DECKING AREA AND GRASS LAID TO LAWN

Guide Price £350,000 Freehold



Location

AGENTS NOTES

We have no hesitation in promoting this re furnished three well sized bedroom VACANT home with three ground floor reception rooms offering one as a home study area or possible fourth bedroom with an outlook over the garden which has newly laid decking and patio area. There are newly laid carpets to the first floor as well as wood flooring to the ground floor area.

Newly painted and decorated both inside and out complimented by double glazing and gas central heating with gas safety certificate and certificate for the electrics.

The first floor offers three bedrooms all are a good size as well as a newly fitted bathroom and separate W.C.

What's not to like or be impressed with by this home.

HALLWAY

14'7" x 8'0"

LOUNGE

15'6" x 12'2"



DINING ROOM

12'9" x 8'9"

THIRD RECEPTION/STUDY/BEDROOM

11'8" x 9'6"

KITCHEN

12'0" x 6'3"

LANDING

BEDROOM

15'6" x 10'6"

BEDROOM

12'10" x 10'6"

BEDROOM

8'6" x 7'6"

BATHROOM

SEPARATE W.C.

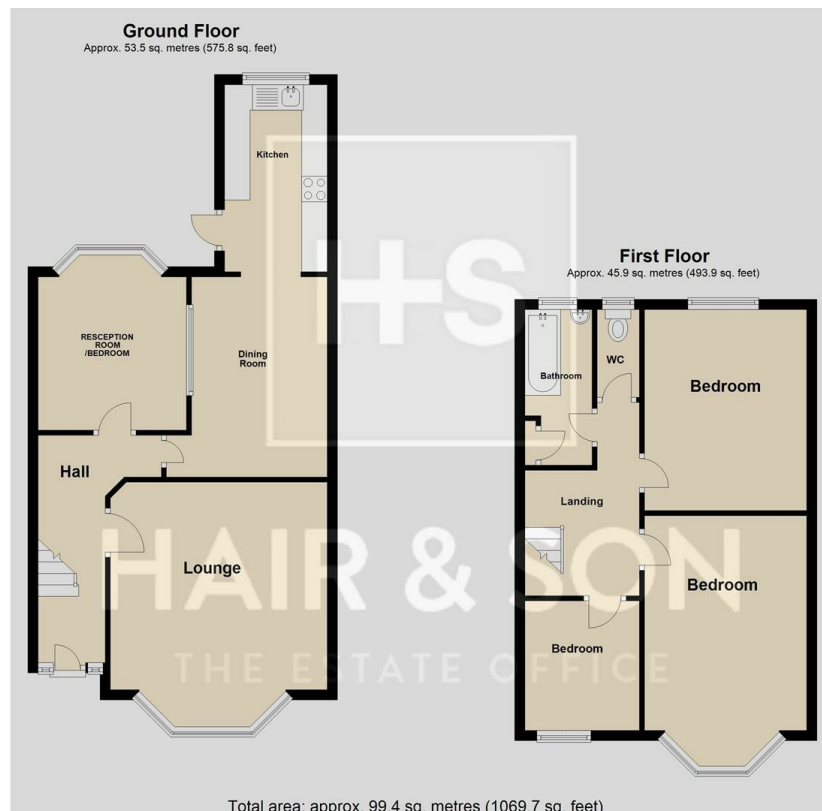
GARDEN

35'0"

These particulars are accurate to the best of our knowledge but do not constitute an offer or contract. Photos are for representation only and do not imply the inclusion of fixtures and fittings. The floor plans are not to scale and only provide an indication of the layout.



Local Authority **Southend on Sea Borough Council**
Council Tax Band **C**
EPC Rating **C**



Sales Office

190 London Road, Southend-On-Sea,
Essex, SS1 1PJ

Contact

01702 34 11 77

<https://hairandson.co.uk/>

Agents Note: Whilst every care has been taken to prepare these particulars, they are for guidance purposes only. All measurements are approximate and for general guidance purposes only and whilst every care has been taken to ensure accuracy, they should not be relied upon and potential buyers/tenants are advised to recheck the measurements.