



30 Albion Drive

Beacon Park, Plymouth, PL2 2QL

£375,000



30 Albion Drive

Beacon Park, Plymouth, PL2 2QL

£375,000



**ALBION DRIVE, BEACON PARK,
PLYMOUTH, PL2 2QL**

ACCOMMODATION

ENTRANCE

Composite front door with obscured glazed panel which opens up into the entrance hall.

ENTRANCE HALL

12'2" x 3'8" widening 6'9" (3.71m x 1.13 widening 2.08m)

Staircase rising to the first floor landing. Doors leading into cloakroom, lounge and kitchen.

CLOAKROOM

6'9" x 2'9" (2.08m x 0.86m)

Matching suite of closed coupled wc & wall-mounted wash hand basin with tiled splash-back. Obscured uPVC double-glazed window to side.

LOUNGE

14'8" x 10'5" plus bay (4.49m x 3.19m plus bay)

Feature fireplace with stone hearth mantle and surround. Glass fronted gas fire. uPVC double-glazed bay window to front. Square archway opens up into the dining room.

DINING ROOM

11'4" x 9'0" (3.46m x 2.75m)

Ample space for a dining table. uPVC double-glazed french doors which open up into the rear garden. Door opening up into the kitchen.

KITCHEN

13'9" x 8'2" (4.21m x 2.5m)

Matching base & wall-mounted units to include fitted twin oven. Space for a dishwasher & upright fridge/freezer. Roll-edge laminate work surfaces have inset 4 ring gas hob & 1.5 sink unit with mixer tap. Tiled splash-back. Understairs storage cupboard. Ceiling spotlights. uPVC double-glazed window to the rear. Door into the garage.

FIRST FLOOR LANDING

uPVC double-glazed window to side. Access hatch to roof void. Doors leading through to bedrooms, bathroom & airing cupboard with shelving & heated towel rail.

BEDROOM ONE

13'11" x 10'0" maximum (4.26m x 3.06m maximum)

Fitted wardrobes with hanging rail shelving & mirrored doors. Storage cupboard where the stairwell rises. uPVC double-glazed window to front. Door opening up into en-suite.

EN-SUITE

6'11" x 4'11" maximum (2.13m x 1.5m maximum)

Matching suite of shower cubicle & fitted Mira shower. Closed coupled wc. Pedestal wash-hand basin. Part-tiled walls. Wall mounted shaver point. Obscured uPVC double-glazed window to front.

BEDROOM TWO

10'1" x 9'6" (3.08m x 2.9m)

Upvc double-glazed window to rear overlooking the garden.

BEDROOM THREE

9'6" x 7'3" (2.91m x 2.21m)

Currently being used as a study. uPVC double-glazed window to rear & overlooking the garden.

BATHROOM

6'10" x 6'2" (2.09m x 1.89m)

Matching suite of panelled bath with mixer shower attachment. Closed coupled wc. Pedestal wash-hand basin. Part-tiled walls. Wall mounted shaver point. Extractor fan. Obscured uPVC double-glazed window to side.

OUTSIDE

A tarmac drive which provides parking for 1 vehicle to the fore of the garage. Paved path leads to front door. A section of the front garden is laid to chippings and hedge border.

GARAGE

18'1" x 8'4" (5.53m x 2.56m)

Roller garage front door. Utility area to the rear of the garage with Worcester Combination Boiler. A base unit with a roll-edge laminate surface over. Stainless steel sink unit with a mixer tap & postions for a washing

machine. Fridge/freezer. Composite door with glazed panels opens up onto the rear garden.

REAR GARDEN

Enclosed garden with south westerly aspect. Paved patio seating area with flower & shrub borders. Paved path runs alongside the property to a gate with access out to the front. Garden shed. Path runs through an arbour the rear section of the garden with mature shrubs & plants dispensed throughout.

COUNCIL TAX

Plymouth City Council

Council Tax Band: C

SERVICES

The property is connected to all the mains services: gas, electricity, water and drainage.



Road Map



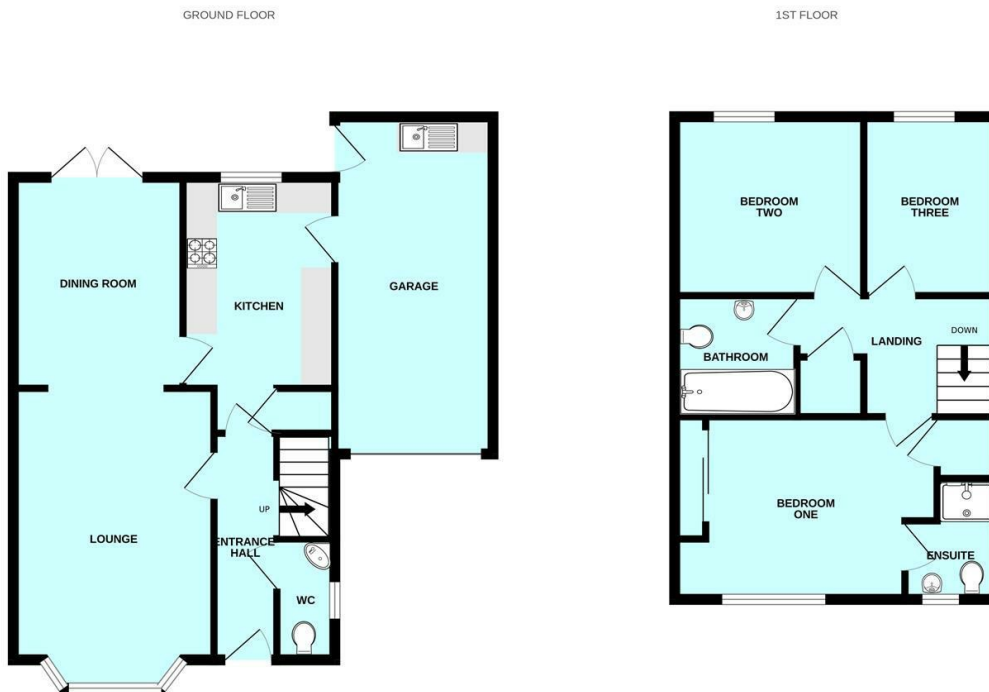
Hybrid Map



Terrain Map



Floor Plan

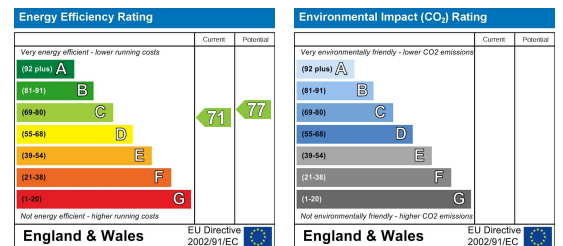


Made with Metropix ©2026

Viewing

Please contact our Plymouth Office on 01752 664125 if you wish to arrange a viewing appointment for this property or require further information.

Energy Efficiency Graph



These particulars, whilst believed to be accurate are set out as a general outline only for guidance and do not constitute any part of an offer or contract. Intending purchasers should not rely on them as statements of representation of fact, but must satisfy themselves by inspection or otherwise as to their accuracy. No person in this firm's employment has the authority to make or give any representation or warranty in respect of the property.