



4 Thetford Road
Kettering, NN14 6LS



Immaculately Presented Three-Storey Home | Extensive Premium Upgrades | South-Facing Garden

This simply stunning three-bedroom semi-detached home is presented to an exceptional show-home standard and has been extensively upgraded by the current owners, creating a high-specification, turnkey property that stands out from comparable homes on the development.

Situated on the highly sought-after Charles Church development, the property is within walking distance of the town centre, offering a variety of restaurants, amenities, GP surgery and secondary schooling. Excellent transport links via the A6 and A14 make this an ideal choice for commuters.

The ground floor comprises an entrance porch, welcoming hallway, elegant lounge and a beautifully upgraded kitchen/dining room, together with a convenient downstairs W/C. High-quality neutral carpets run throughout the lounge and upper floors, providing a cohesive and luxurious finish.

The heart of the home is the impressive kitchen/dining space, enhanced with quartz worktops, upgraded cupboard doors and chrome spotlights. A full range of integrated appliances includes a dishwasher, 50/50 fridge freezer, washer dryer and four-zone induction hob, offering both practicality and contemporary style — perfect for everyday living and entertaining.

Arranged over the first and second floors are three genuine double bedrooms, a rare and highly desirable feature. The family bathroom benefits from an upgraded over-bath shower, screen and full-height tiling to wet areas. The superb second-floor principal suite provides a private retreat, complete with a stylish en-suite featuring half-height tiling, upgraded towel radiator, chrome spotlights, useful storage and a large electric Velux window allowing for excellent natural light.

Externally, this property sits on an oversized plot with a south-facing garden and extended patio—perfect for summer entertaining. A private driveway with EV charger provides ample parking. A must-view home!

£295,000



3

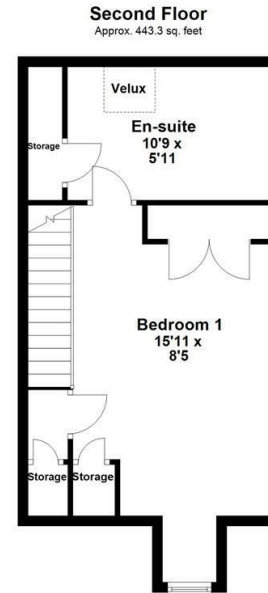
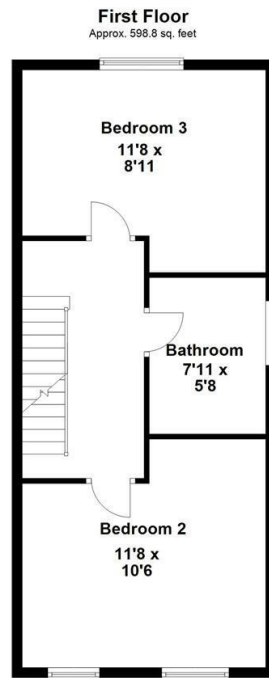
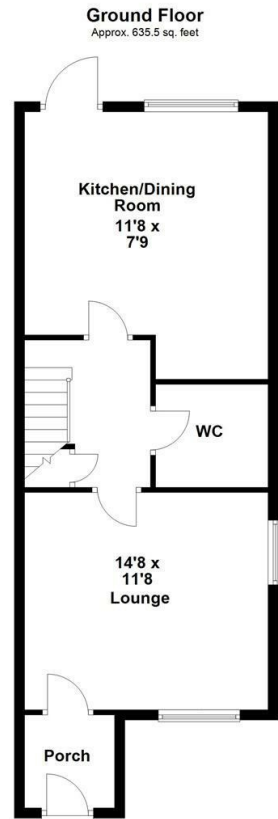


3



2





Total area: approx. 1677.6 sq. feet



Energy Efficiency Rating

	Current	Potential
Very energy efficient - lower running costs		
(92 plus) A		
(81-91) B	90	90
(69-80) C		
(55-68) D		
(39-54) E		
(21-38) F		
(1-20) G		
Not energy efficient - higher running costs		
England & Wales	EU Directive 2002/91/EC	





**Simpson
Ellson**

T: 01536 645960

E: rothwell@simpsonellson.co.uk



01536 645960

rothwell@simpsonellson.co.uk

<https://www.simpsonellson.co.uk>

32 High Street, Rothwell, Northants, NN14 6BQ