



7 Darwin Place, Mountfields, Shrewsbury, SY3 8RD

2 bedroom apartment — £150,000 Leasehold

7 Darwin Place, Mountfields, Shrewsbury, SY3 8RD

Coopergreenpooks.co.uk

£150,000 Leasehold — 2 bedroom apartment

sales@cgpooks.co.uk

This neatly presented larger style two-bedroom apartment provides well designed accommodation, located in a fantastic position just a few minutes' walk from the town centre, while also benefitting from secure gated parking.

KEY FEATURES

- Lovely open plan kitchen/dining/living room with wood boarded flooring and a feature bay window allowing plenty of natural light
- Fitted kitchen with a range of units and space for appliances
- Two generous bedrooms, with bedroom one having windows to two elevations, and a well-appointed family bathroom with shower
- Double glazed windows and gas fired central heating
- Electric gated access to a private secure residents car park with a designated space for number 7 which is under cover
- A few minutes walk from the local park and The Quarry, lovely riverside walks, and the town centre. Theatre Severn is also a stone's throw away, as well as plenty of other great amenities, including various restaurants, pubs and shops
- The property is being sold vacant with no upward chain

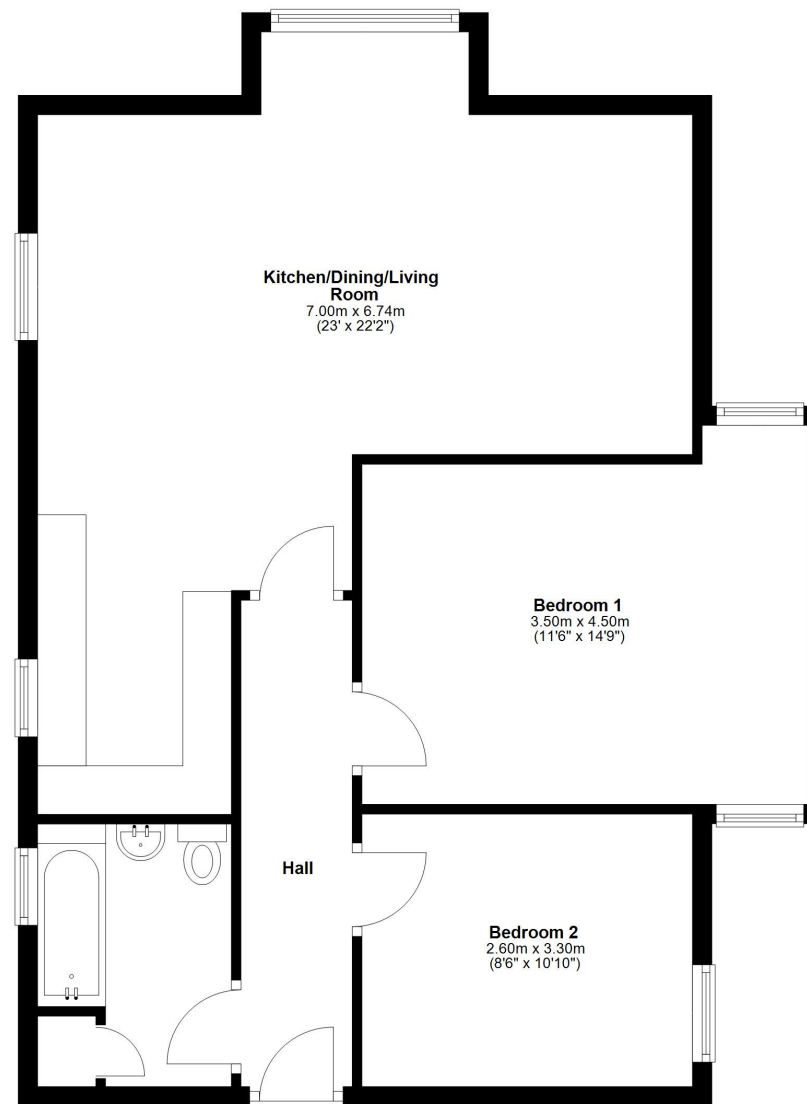
Cooper Green Pooks
3 Barker Street
Shrewsbury
SY1 1QF

www.cgpooks.co.uk
sales@cgpooks.co.uk
01743 276666



First Floor

Approx. 73.9 sq. metres (795.9 sq. feet)



Total area: approx. 73.9 sq. metres (795.9 sq. feet)







7 Darwin Place, Mountfields, Shrewsbury, SY3 8RD

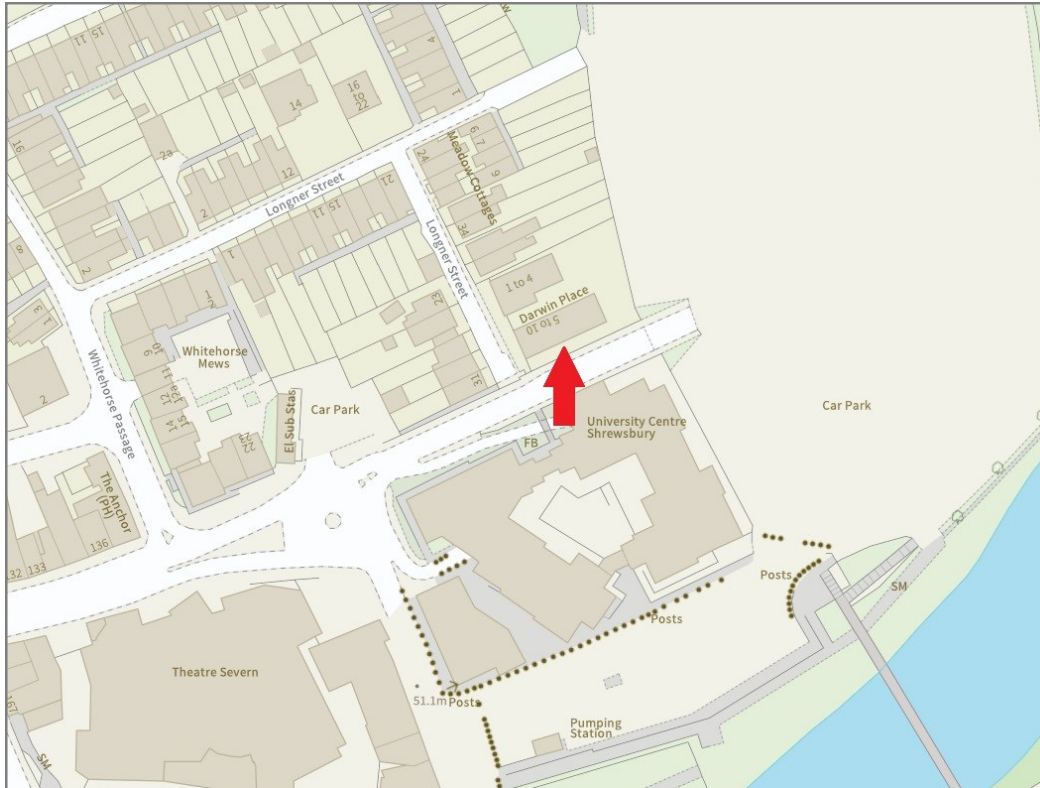
£150,000 Leasehold — 2 bedroom apartment

sales@cgpooks.co.uk

rightmove

onTheMarket.com

RICS
Regulated by RICS



BOUNDARIES NOT CONFIRMED

Local Authority	Shropshire Council
Council Tax	Band B
EPC Band	Band B
Services	All mains services are connected

Tenure	Leasehold
Lease Length	199 years from 2006
Service Charge	£2,787.40 per annum
Ground Rent	£100 per annum

7 Darwin Place, Mountfields, Shrewsbury, SY3 8RD

Coopergreenpooks.co.uk

£150,000 Leasehold — 2 bedroom apartment

sales@cgpooks.co.uk



IMPORTANT NOTICE: Cooper Green Pooks for themselves and for the lessors or vendors of this property whose agents they are give notice that: 1 No appliances, services or service installations have been tested and no warranty as to suitability or serviceability is implied. Any prospective purchaser or lessee is advised to obtain verification from their surveyor or solicitor. 2. The particulars are set out as a general outline only for the guidance of the intended purchasers or lessees and do not constitute, nor constitute part of, an offer or contract. 3. All descriptions, reference to condition and necessary permissions for use and occupation and other details are given in good faith and are believed to be correct but any intending purchasers or lessees should not rely on them as statements or representation of fact but satisfy themselves by inspection or otherwise as to the correctness of each of them. 4. No person in the employment of Cooper Green Pooks has any authority to make or give any representation or warranty whatsoever in relation to this property. 5. All rentals and prices are quoted exclusive of Stamp Duty, legal and surveyors fees and any other associated purchasers or lessees costs. 6. Floor plans are indicative only and should not be relied on. 7. The plan showing the boundary of the property is indicative only and has not been checked against the legal title so should not be relied on. 8. All dimensions, floor areas and site areas are only approximate and should not be relied on. Dimensions are generally maximum room dimension.