



Vernon Road, Ilford – IG3 8DJ

£500,000 Freehold

Guide Price £525,000 – £550,000 • Victorian Style 3 Bedroom Mid-Terraced Family Home • Close to Seven Kings / Goodmayes Station (Elizabeth Line) • Potential to Add Value & Extend to the Rear / Loft & Out-Building (STPP) • Will Suit Residential & Rental Investment Buyers • Close to a Variety of Amenities – Shops / Restaurants / School & Places of Worship for a Variety of Faiths • Close to High Rd / Goodmayes Rd & Green Lane • Fantastic Close Knit Community • Driveway to the Front • No Onward Chain

 **HIGHCASTLE
ESTATES**

020 3026 4420
sales@hceuk.com

Guide Price of £525,000 – £550,000. Victorian style three bed mid-terrace near Elizabeth Line. No chain. Off-street parking. Scope to extend (STPP). Close to amenities. Ideal for families.

Council Tax band: D

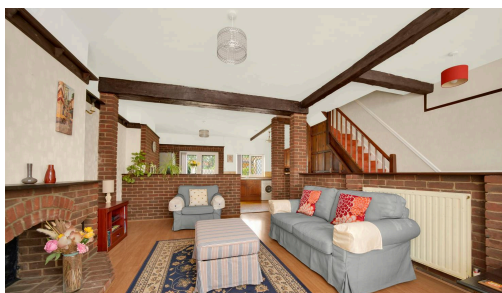
Tenure: Freehold

EPC Energy Efficiency Rating: D

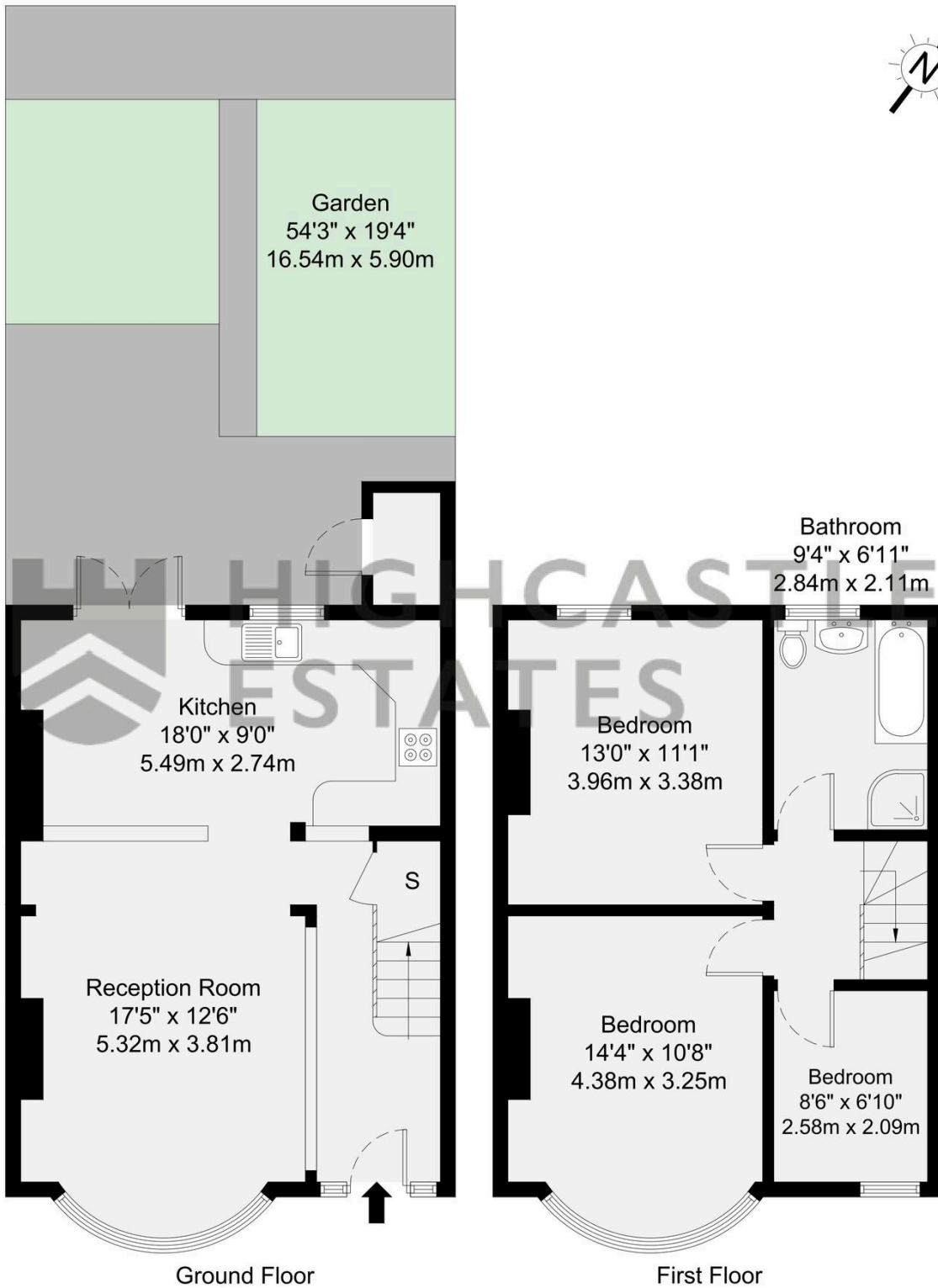
EPC Environmental Impact Rating:



- Guide Price £525,000 – £550,000
- Victorian Style 3 Bedroom Mid-Terraced Family Home
- Close to Seven Kings / Goodmayes Station (Elizabeth Line)
- Potential to Add Value & Extend to the Rear / Loft & Out-Building (STPP)
- Will Suit Residential & Rental Investment Buyers
- Close to a Variety of Amenities – Shops / Restaurants / School & Places of Worship for a Variety of Faiths
- Close to High Rd / Goodmayes Rd & Green Lane







GROSS INTERNAL AREA (GIA)
The footprint of the property
88.5 sq m / 952 sq ft

TOTAL STORAGE SPACE
Storage and wardrobe total area
1.1 sq m / 12 sq ft

EXTERNAL FEATURES
Garden, Balcony, Terrace, Verandah etc.
97.6 sq m / 1050 sq ft

RESTRICTED HEAD HEIGHT
Limited use area under 1.5m
0.0 sq m / 0.0 sq ft

Disclaimer : Floorplan measurements are approximate and are for illustrative purposes only. While we do not doubt the floorplan accuracy and completeness, you or your advisors should conduct a careful, independent investigation of the property in respect of monetary valuation.

**Maison
VUE**

You can include any text here. The text can be modified upon generating your brochure.