

KEYSTONE

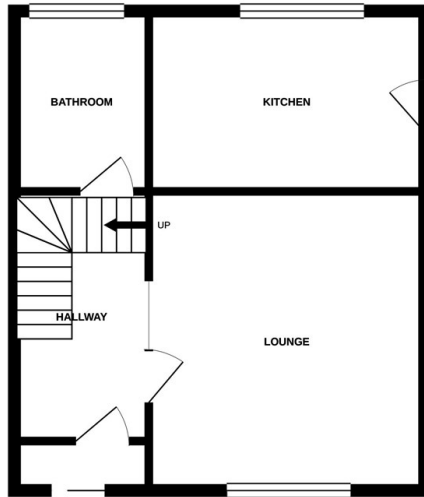


Hawthorn Drive, Ipswich, IP2 0PG

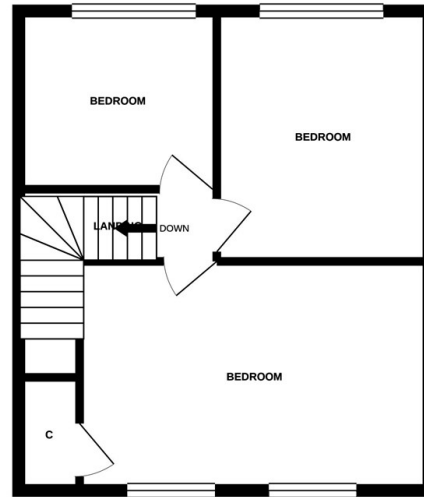
Offers In Excess Of £220,000

- End Terraced House
- Kitchen/Breakfast Room
- Double Glazed
- Three Bedrooms
- Ground Floor Wet Room
- Driveway
- Lounge
- Gas Central Heating
- Popular Location

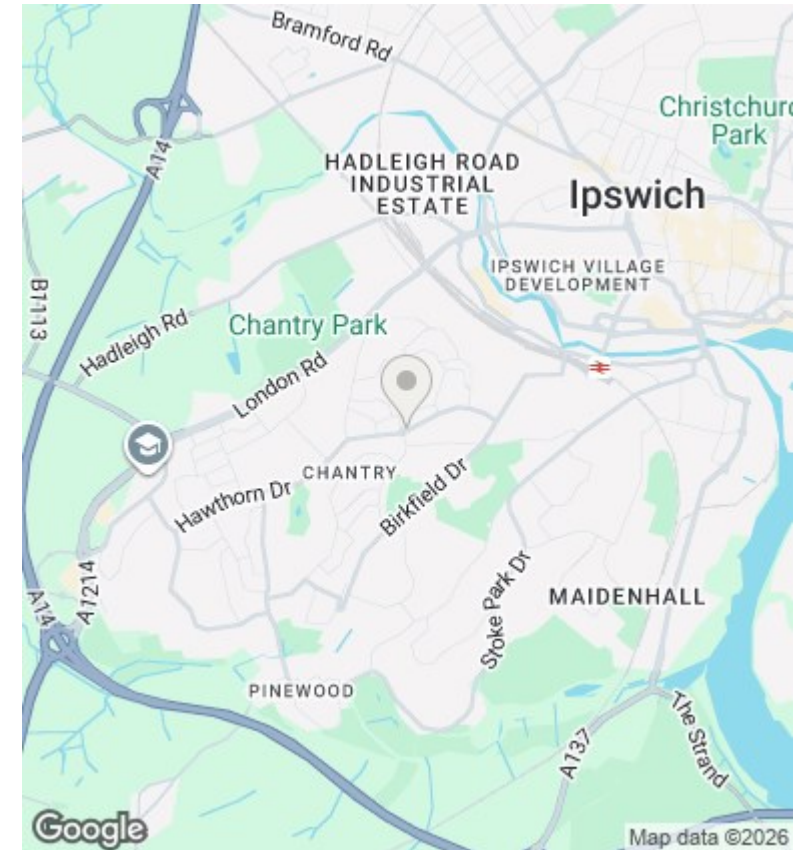
GROUND FLOOR



1ST FLOOR



Whilst every attempt has been made to ensure the accuracy of the floorplan contained here, measurements of doors, windows, rooms and any other items are approximate and no responsibility is taken for any error, omission or mis-statement. This plan is for illustrative purposes only and should be used as such by any prospective purchaser. The services, systems and appliances shown have not been tested and no guarantee as to their operability or efficiency can be given.
Made with Metropix ©2021



Directions

Viewings

Viewings by arrangement only. Call 01473 221 399 to make an appointment.

EPC Rating:
D

| Energy Efficiency Rating | | Current | Potential |
|--|---|-------------------------|-----------|
| <i>Very energy efficient - lower running costs</i> | | | |
| (92 plus) | A | | |
| (81-91) | B | | |
| (69-80) | C | | 80 |
| (55-68) | D | 63 | |
| (39-54) | E | | |
| (21-38) | F | | |
| (1-20) | G | | |
| <i>Not energy efficient - higher running costs</i> | | | |
| England & Wales | | EU Directive 2002/91/EC | |