

Need a Mortgage in principle to make offers? Call us now for quick assistance!
0121 775 0101



Do you need to sell? Start your journey now! Call us we can help.
0121 775 0101



SCAN FOR MORE INFO
SIZE - 724 Sq Ft
TENURE - Freehold
COUNCIL TAX - Solihull Metropolitan Borough Council - C
BROADBAND - Upload Max 1000Mbps Download Max 1800Mbps
MOBILE SERVICES - EE - 87%, 3 - 82%, Vodafone - 82%, 02 - 80%
EPC - D - 55
PARKING - For at least 2 Cars
FLOODRISK - Very Low
SERVICES - Mains
COVENANTS - N/A

127 Kineton Green Road
Solihull, B92 7EG
Offers Over £375,000

This exquisite mid-terraced cottage-style property offers a delightful blend of period charm and modern living. Having undergone a complete refurbishment in 2020, the home is presented to an exceptionally high standard, making it an ideal choice for those seeking a move-in ready residence.

FEATURES

- Stunning Period Mid Terrace
- Refurbished to a High Standard
- Lounge with Feature Fireplace
- Fitted Kitchen with Dining Area
- Versatile Reception Room
- Principal Double Bedroom with Fitted Wardrobes
- Single Bedroom
- Modern Family Bathroom
- Long Private Rear Garden
- Driveway Parking for Two Vehicles

Are you an investor interested in expanding your portfolio?

Call 0121 775 0101 to provide your investment criteria for alerts.



SCAN TO VIEW OUR WEEKLY FILMS & SUBSCRIBE

Sneak Peeks

Every week, we unveil "Sneak Peeks," a feature showcasing exclusive properties before they hit Rightmove and other platforms.

The Landlord Club

Join our Landlord Club for weekly updates on legislation, market trends, and our Letting Director's 'Investment Pick of the Week' for optimal ROI.

HTSPMD

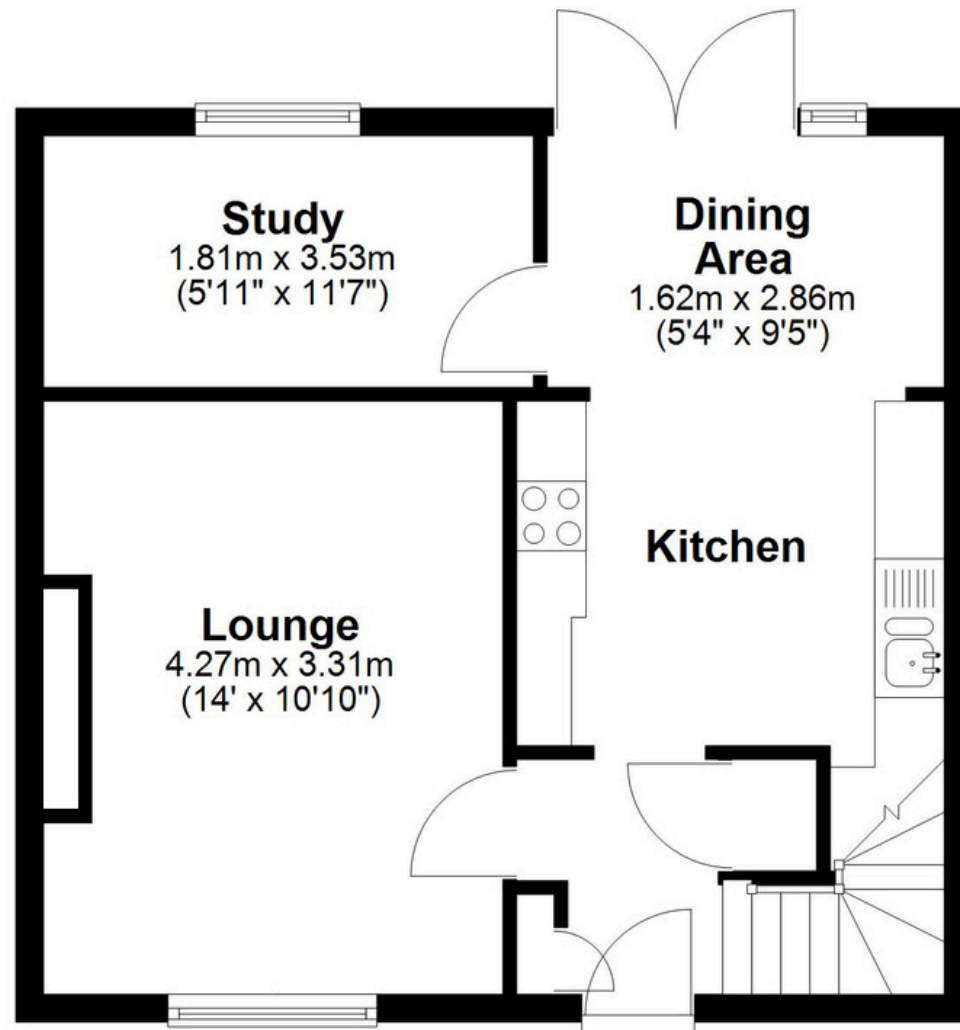
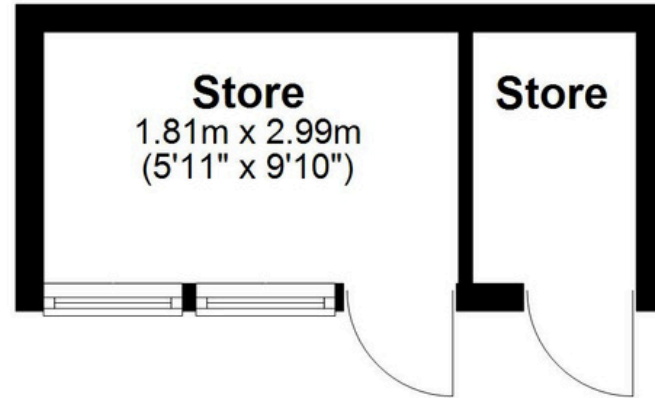
Tune into 'How's The Solihull Property Market Dom' weekly for a quick, insightful snapshot of the market.

The Mortgage Update

Get weekly insights and the best deals with our Mortgage Update, your shortcut to navigating the complex mortgage landscape confidently.

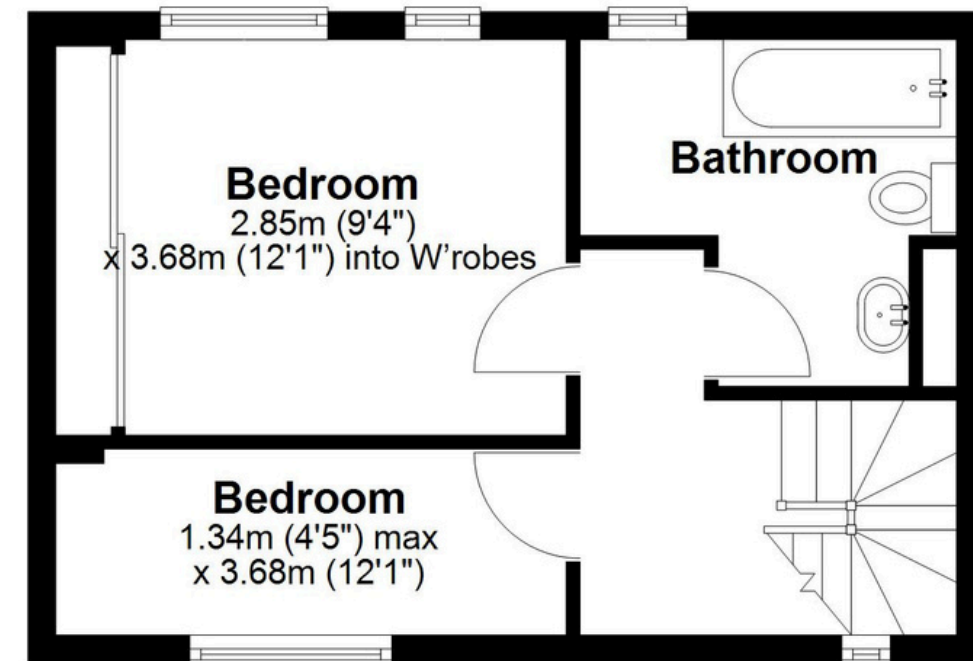
Ground Floor

Main area: approx. 39.6 sq. metres (425.8 sq. feet)
Plus outbuildings, approx. 7.7 sq. metres (83.2 sq. feet)



First Floor

Approx. 27.7 sq. metres (298.7 sq. feet)



Main area: Approx. 67.3 sq. metres (724.5 sq. feet)

Plus outbuildings, approx. 7.7 sq. metres (83.2 sq. feet)

This floor plan is for illustration purposes only, this is not intended to be a measured/scaled survey or comply with RICS guidelines. All measurements (including total floor area) openings, orientation and floor area are approximate. No details are guaranteed, they cannot be relied upon for any purpose and do not form part of any agreement. A party must rely upon its own inspection(s). No responsibility is taken for any error, omission, or mis-statement.

Plan produced using PlanUp.