



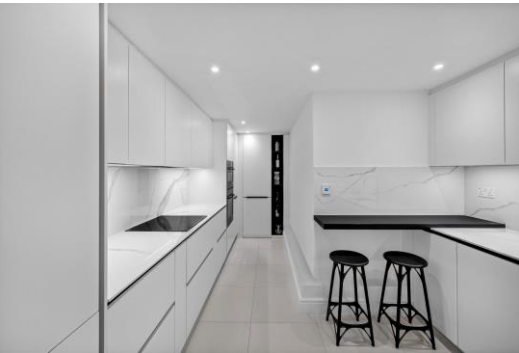
# Hampstead Gates

Prince of Wales Road, NW5

Guide Price £1,200,000

A superb apartment in the highly sought after Hampstead Gates development - a local landmark and former school in the heart of Kentish Town. This very special apartment, recently refurbished to an exacting standard, measuring in excess of 1550 sq. ft, comes with the added bonus of its own private entrance, two receptions, two patios and secure allocated underground parking. The building also features a private courtyard, a porter, secured bicycle rack and high-speed fibre internet. Very long lease and being sold chain-free.

**CHESTERTONS**



# Hampstead Gates

Prince of Wales Road, NW5

- Measuring in excess of 1550 square feet
- Excellent location
- Secure underground parking
- Two patios
- Own entrance
- Chain-free
- Two bedrooms and two bedrooms
- Recently refurbished to a high standard



Hampstead Gates is a gated development with porter and communal garden in an exceptional location close to the amenities, shops, bars and restaurants of Kentish Town, as well as outstanding schools and within easy reach of Camden Town and Chalk Farm. The green open spaces of Primrose Hill and Parliament Hill / Hampstead Heath are nearby and transport is excellent with Kentish Town West and Kentish Town stations in very easy reach.

**Tenure:** Leasehold with 974 years remaining

**Service Charge:** £10,422 per annum

**Ground Rent:** £350 per annum

**Local Authority:** Camden

**Council Tax Band:** F

Score	Energy rating	Current	Potential
92+	A		
81-91	B	81 B	85 B
69-80	C		
55-68	D		
39-54	E		
21-38	F		
1-20	G		

### *Chestertons Kentish Town Sales*

225 Kentish Town Road

London

NW5 2JU

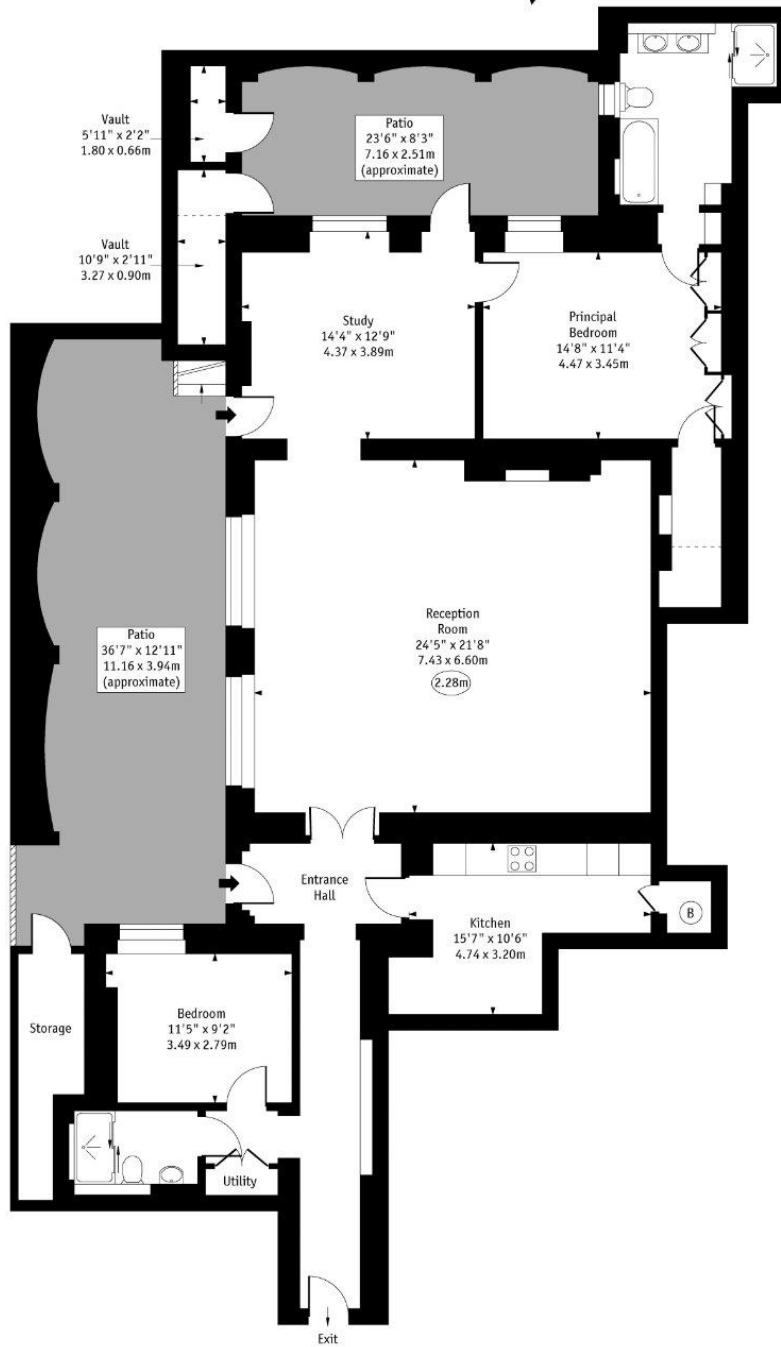
kentishtown@chestertons.co.uk

020 7267 1010

chestertons.co.uk

Hampstead Gates,  
Prince of Wales Road

○ - Ceiling Height



Lower Ground Floor

Gross Internal Area - 1588 Sq Ft - 147.54 Sq M

Approx Gross Internal Area 1588 Sq Ft - 147.54 Sq M  
(Excluding Vaults & Storage)

Vaults & Storage Area 95 Sq Ft - 8.79 Sq M

Every attempt has been made to ensure the accuracy of the floor plan shown.  
However, all measurements, fixtures, fittings, and data shown are approximate interpretations and for illustrative purposes only. Measured according to the RICS. Not To Scale.  
www.goldlens.co.uk  
Ref. No. 031072DH

Chesterton UK Services Limited trading as Chestertons for themselves and for the vendor of this property whose agents they are, give notice that (i) these particulars do not constitute any part of an offer or contract, (ii) all statements contained within these particulars are made without responsibility on the part of Chestertons or the vendor, (iii) whilst made in good faith, none of the statements contained within these particulars are to be relied upon as a statement or representation of fact, (iv) any intending purchasers must satisfy themselves by inspection or otherwise as to the correctness of each of the statements contained within these particulars, (v) the vendor does not make or give either Chestertons or any person in their employment any authority to make or give representation or warranty whatsoever in relation to this property. Wide angle lenses may be used. ©Copyright Chestertons | Chesterton UK Services Limited | Registered Office 40 Connaught Street, Hyde Park, London W2 2AB Registered Company Number 05334580.



This paper is  
100% recyclable