



Great Portland Street
Marylebone, W1W

CHESTERTONS





A one bedroom apartment in this well maintained building in the heart of Marylebone.

The building is excellently located within a few minutes of the amenities and transport links of Oxford Circus and Regent Street.

The property is moments away from world-class restaurants, bars and cafés, and the best retailing the city has to offer, all of which form an essential part of central London living.

- One bedroom
- Open plan kitchen
- Double bedroom
- Built-in storage
- Split level

£2,643.33 pcm

Additional tenant charges apply (fees apply to non-AST tenancies only)

Tenancy Agreement Fee: £360

References per Tenant/Guarantor: £60

Inventory check (approx. £100 – £250 inc. VAT)

chestertons.co.uk/property-to-rent/applicable-fees

Energy Efficiency Rating		Current	Potential
100-105	A		
81-100	B		
62-81	C	74	74
43-62	D		
25-43	E		
10-25	F		
1-10	G		

Not energy efficient - higher running costs

England, Scotland & Wales EU Directive 2002/91/EC

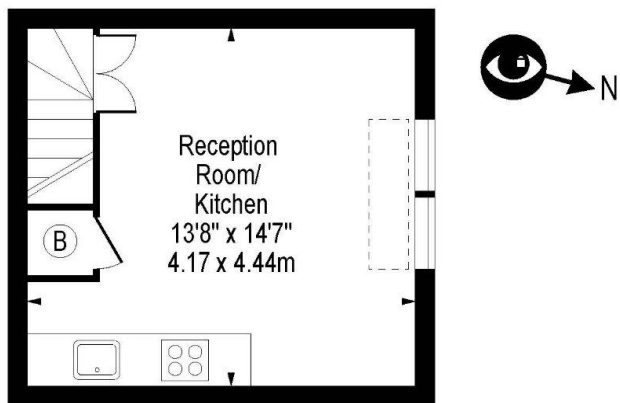
Minimum Term: 12 months
Deposit Required: Five weeks
Local Authority: Westminster
Council Tax Band: D
EPC Rating: C
Furnished

Chestertons Hyde Park

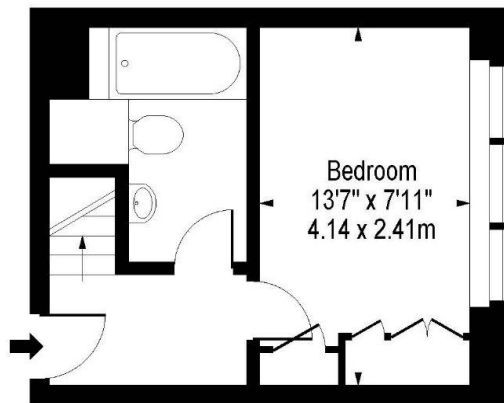
40 Connaught Street
 Hyde Park & Marylebone
 London
 W2 2AB

hydeparklettingsusers@chestertons.co.uk
 02072985950

Great Portland Street, W1W 7LN



Second Floor



First Floor

Approx Gross Internal Area **430 Sq Ft - 39.95 Sq M**

