
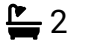





HOMES BY VICTORIA  
ESTATE AGENCY

## Wood Lane, Astwood Bank, Redditch, B96 6NN

Offers Over £650,000

 3  2  1



**\*\*OPEN DAY SATURDAY 6TH JUNE - BY APPOINTMENT ONLY\*\*** Welcome to Wood Lane, an exceptional detached bungalow nestled along a peaceful and highly sought-after lane in the desirable village of Astwood Bank. Set back behind an expansive gravel driveway and framed by a beautifully manicured fore garden, this charming home offers both privacy and presence from the moment you arrive.

[homesbyvictoria.co.uk](https://www.homesbyvictoria.co.uk)

[victoria@homesbyvictoria](mailto:victoria@homesbyvictoria) | 07833 136521

FOR M HOMES MIDLANDS LIMITED trading as Homes By Victoria Company Number: 13688840 VAT no: 470190115



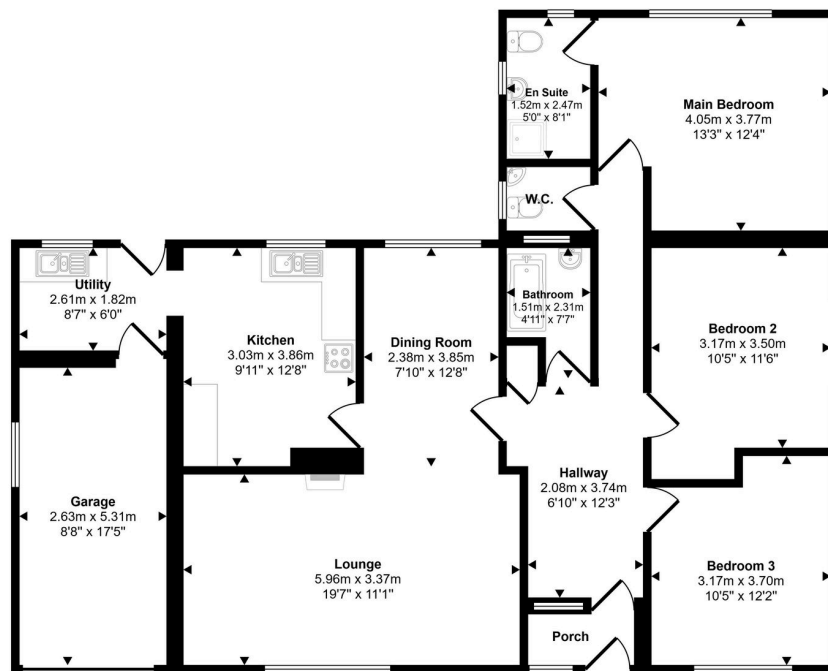
HOMES BY VICTORIA  
ESTATE AGENCY



## Key Features

- Located on one of Astwood Banks most desirable lanes
- An exceptional detached bungalow
- L-shaped lounge diner with open fire
- Bathroom, WC and en-suite to master
- Single garage, double garage/workshop
- Amazing plot set on just over an acre
- Kitchen and utility room
- Three double bedrooms
- Potential to elevate STPP
- A must view opportunity

Approx Gross Internal Area  
130 sq m / 1396 sq ft



Floorplan

This floorplan is only for illustrative purposes and is not to scale. Measurements of rooms, doors, windows, and any items are approximate and no responsibility is taken for any error, omission or mis-statement. Icons of items such as bathroom suites are representations only and may not look like the real items. Made with Made Snappy 360.