



1 Dene Court, 189 Ufton Lane
Sittingbourne

£200,000

1 Dene Court

Sittingbourne

IDEAL FIRST TIME BUY. Delightful maisonette in sought after location. Long lease, share of freehold, parking, double bedroom, new shower room. Spacious living area, landscaped garden. Move in ready. Council Tax band: A

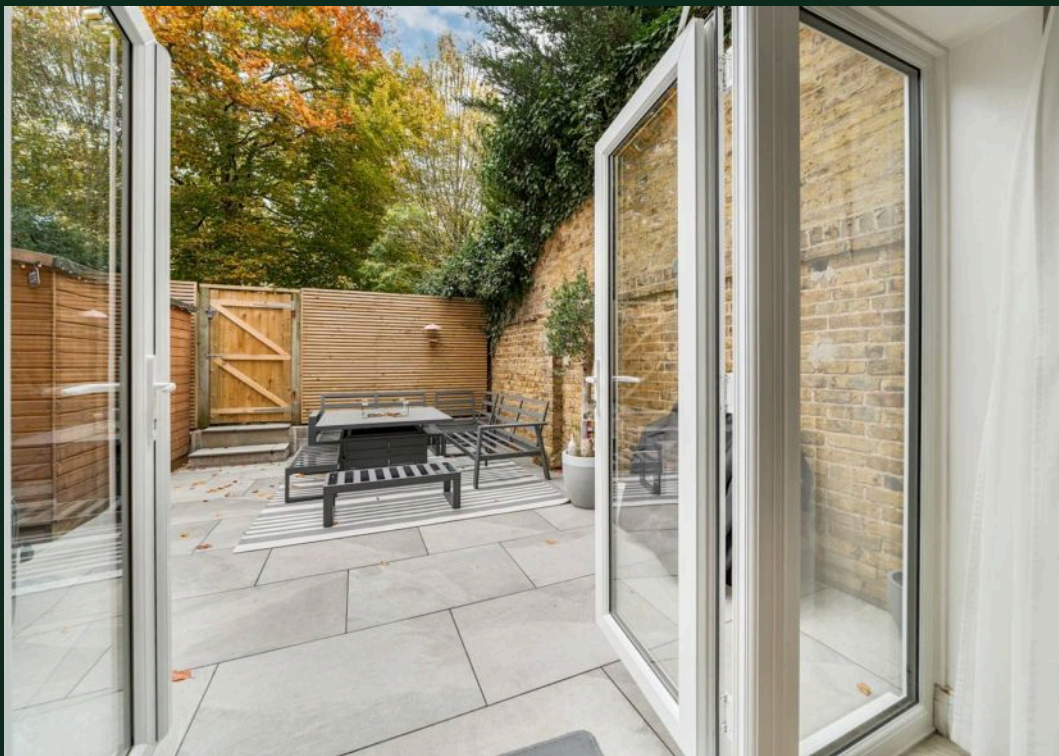
Tenure: Leasehold

EPC Energy Efficiency Rating: C

EPC Environmental Impact Rating: C

- Ground floor Maisonette with long lease
- Share of freehold with property
- Enclosed, landscaped garden
- Block paved driveway and resident parking space
- Double bedroom with built in wardrobes
- Beautiful refitted shower room
- French doors fitted to lounge opening into garden
- New flooring and carpet
- Sought after location in Sittingbourne
- Ideal first time buy, move straight in





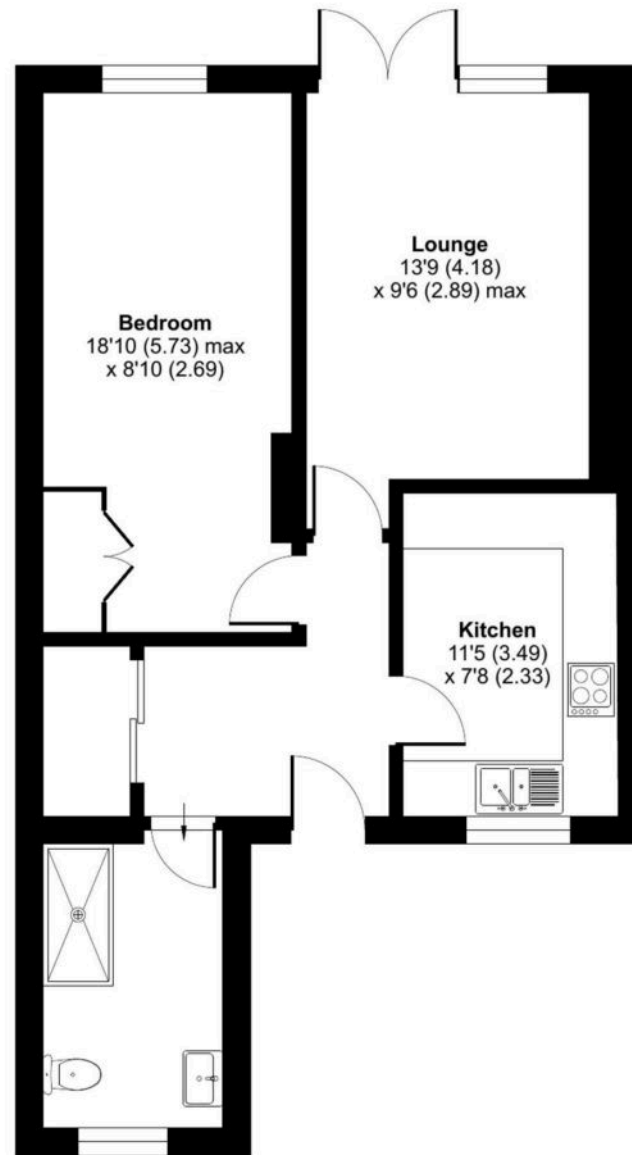




Ufton Lane, Sittingbourne, ME10

Approximate Area = 571 sq ft / 53 sq m

For identification only - Not to scale



GROUND FLOOR



Floor plan produced in accordance with RICS Property Measurement 2nd Edition, Incorporating International Property Measurement Standards (IPMS2 Residential). © nichecom 2025. Produced for Homely Bespoke Estate Agents. REF: 1375515



Homely Bespoke Estate Agents

10 Orchard Way, Eastchurch – ME12 4DS

07817 727321

lynne@homelyproperties.co.uk

www.homelyproperties.co.uk