



Hildaville Drive | | Westcliff-on-Sea | SS0 9RU

Guide Price £300,000

bear
Estate Agents

**Hildaville Drive |
Westcliff-on-Sea | SS0 9RU
Guide Price £300,000**

* £300,000 - £325,000 * No Onward Chain *
Three-bedroom terraced home offering excellent refurbishment potential, generous living space, and a large West-facing garden, all positioned within a sought-after Westcliff-on-Sea location.

- Three Bedroom Terraced House
- Excellent Refurbishment Opportunity
- Dining Room with French Doors
- West Facing Rear Garden
- Sought After Westcliff-on-Sea Location
- No Onward Chain
- Bay Fronted Lounge
- Feature Fireplaces
- Partly Double Glazed
- Close to Chalkwell Station and Beach Location





This spacious terraced house presents an exciting opportunity for buyers looking to modernise and create a fantastic family home. The property opens with an entrance hall leading into a bay-fronted lounge featuring a character fireplace. A separate dining room also benefits from a feature fireplace, along with French doors opening onto the rear garden. The ground floor is completed by a fitted kitchen. To the first floor, the landing leads to two double bedrooms, including a bay-fronted master bedroom and a second bedroom with built-in wardrobes, alongside a single bedroom with a bay window. There is also a two-piece bathroom and a separate WC. Externally, the property boasts a large laid-to-lawn West-facing rear garden with a hard standing patio area. The home is partly double glazed and requires complete refurbishment and modernisation, offering excellent scope to add value and personalise throughout.

Situated on Hildaville Drive in Westcliff-on-Sea, the property falls within the catchment area for Chalkwell Hall Infant School, Chalkwell Hall Junior School, and Chase High School. The home is conveniently located close to London Road, bus links, and Chalkwell Train Station, while amenities, Chalkwell Park, and Chalkwell Beach are all within easy reach, making this an ideal location for families and commuters alike.

Three Bedroom Terraced House

Entrance Hall

16'3 x 8'4 (4.95m x 2.54m)

Lounge

15'5 x 12'9 (4.70m x 3.89m)



Dining Room

13'6 x 10'7 (4.11m x 3.23m)

Kitchen

13'7 x 8'4 (4.14m x 2.54m)

Lobby (leading to garden)

3'7 x 2'6 (1.09m x 0.76m)

Landing

Bedroom One

15'6 x 12'1 (4.72m x 3.68m)

Bedroom Two

13'4 x 11'3 (4.06m x 3.43m)

Bedroom Three

7'3 x 7'1 (2.21m x 2.16m)

Bathroom

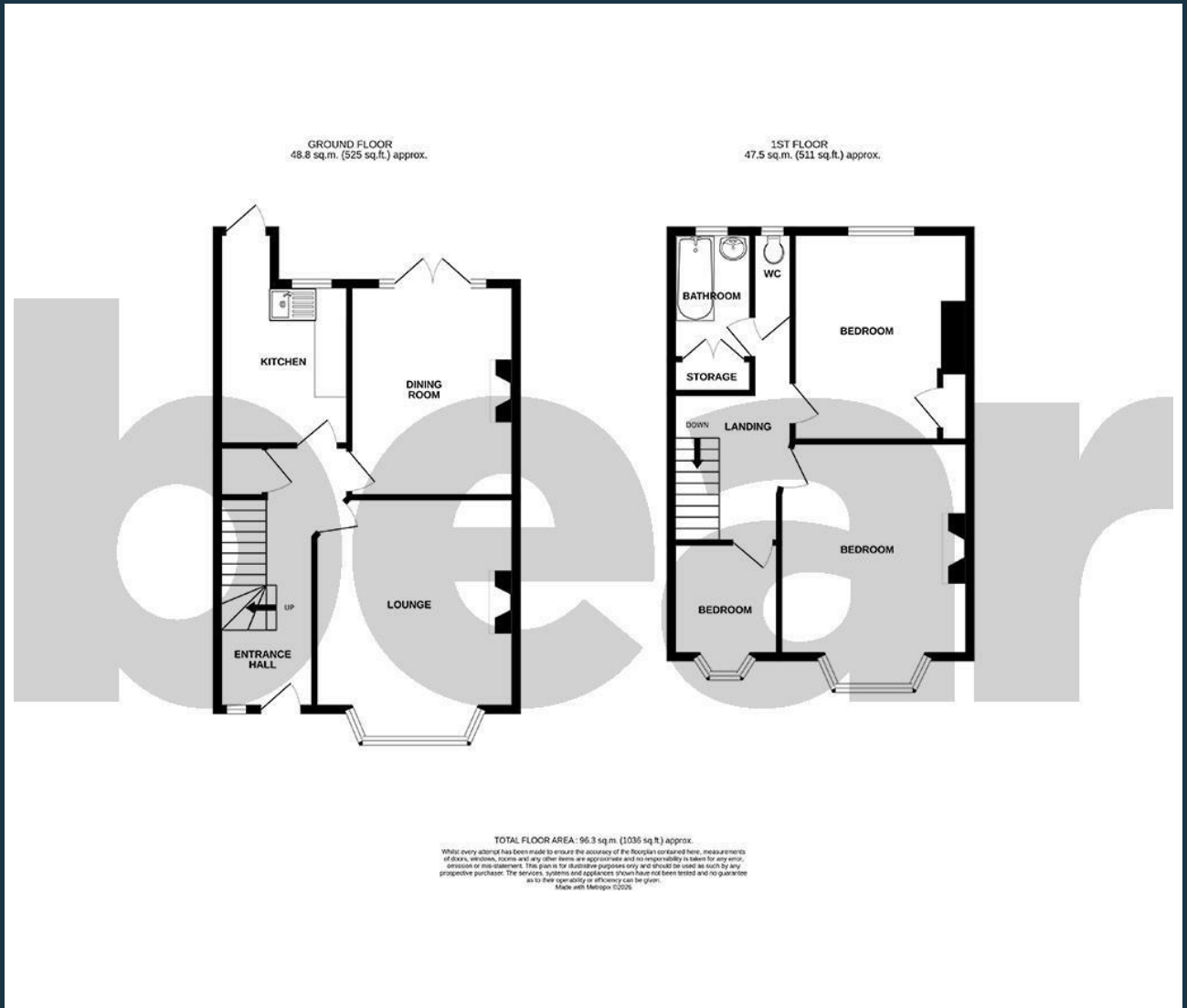
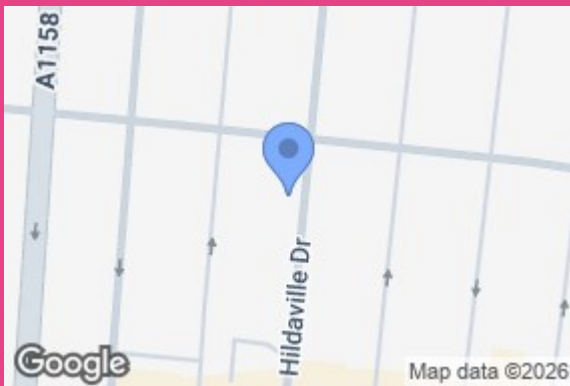
8'1 x 5'1 (2.46m x 1.55m)

WC

5'3 x 2'7 (1.60m x 0.79m)

West Facing Garden





Energy Efficiency Rating		Current	Potential
Very energy efficient - lower running costs			
(92 plus) A			
(81-91) B			
(69-80) C			
(55-68) D			
(39-54) E			
(21-38) F			
(1-20) G			
Not energy efficient - higher running costs			
England & Wales		EU Directive 2002/91/EC	

204 Woodgrange Drive
 Southend-on-Sea
 Essex
 SS1 2SJ
 01702 811211
 info@bearestateagents.co.uk
<https://www.bearestateagents.co.uk>