



St. Margarets Street | | Rochester | ME1 1TU

Asking price £800,000



St. Margarets Street |
Rochester | ME1 1TU
Asking price £800,000

A Rare Opportunity to Own a Piece of Rochester's History
Grade II Listed 8-Bedroom Home with River Views – First Time on the Market in 30+ Years

Offered for sale for the first time in over three decades, this magnificent Grade II listed 8-bedroom semi-detached home lies in the heart of historic Rochester. Built in 1701, originally as an annexe to the neighbouring property, this residence is rich with period charm, character features, and fascinating history—including a hidden passageway and a basement once linked to smuggler's tunnels leading to the River Medway.

Set over three spacious floors, the home includes eight double bedrooms, two kitchens, two family bathrooms, three reception areas, and two conservatories. The secluded rear garden offers mature trees, flowering borders, and elevated views over the river—perfect for entertaining or relaxing.

From the upper floors, enjoy rare views of Rochester Castle. Located just a short walk from Rochester Station (with high-speed links to London in under 40 minutes), the High Street, and key historic sites, the location offers convenience with charm.

Families will appreciate proximity to excellent local schools, including the prestigious King's School Rochester (founded in 604 AD), Rochester Grammar, and several sought-after primaries.

With an extraordinary blend of history, space, and potential, this unique home offers a once-in-a-generation chance to live in one of Rochester's most characterful properties.

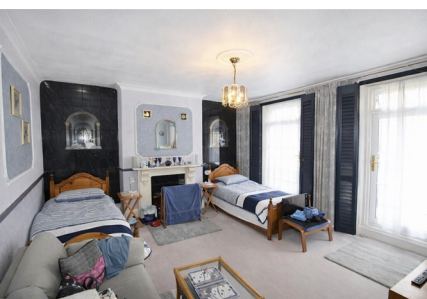
Arrange your viewing today and step into a home that's steeped in stories, with a future ready to write.

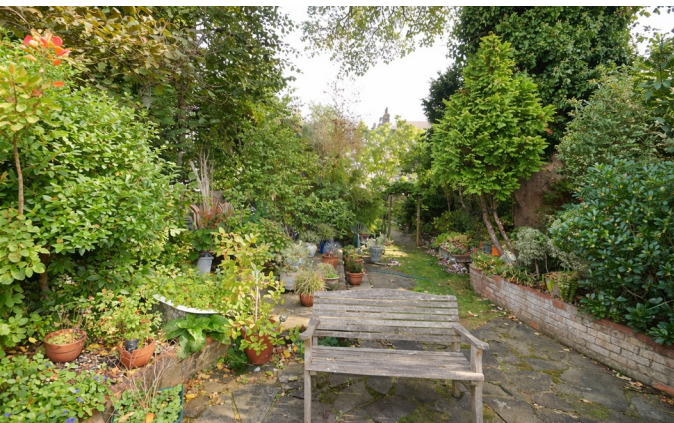


****Grade II Listed 8 Bedroom Semi-Detached House for Sale in Rochester | Historic Home with River Views & Period Features****

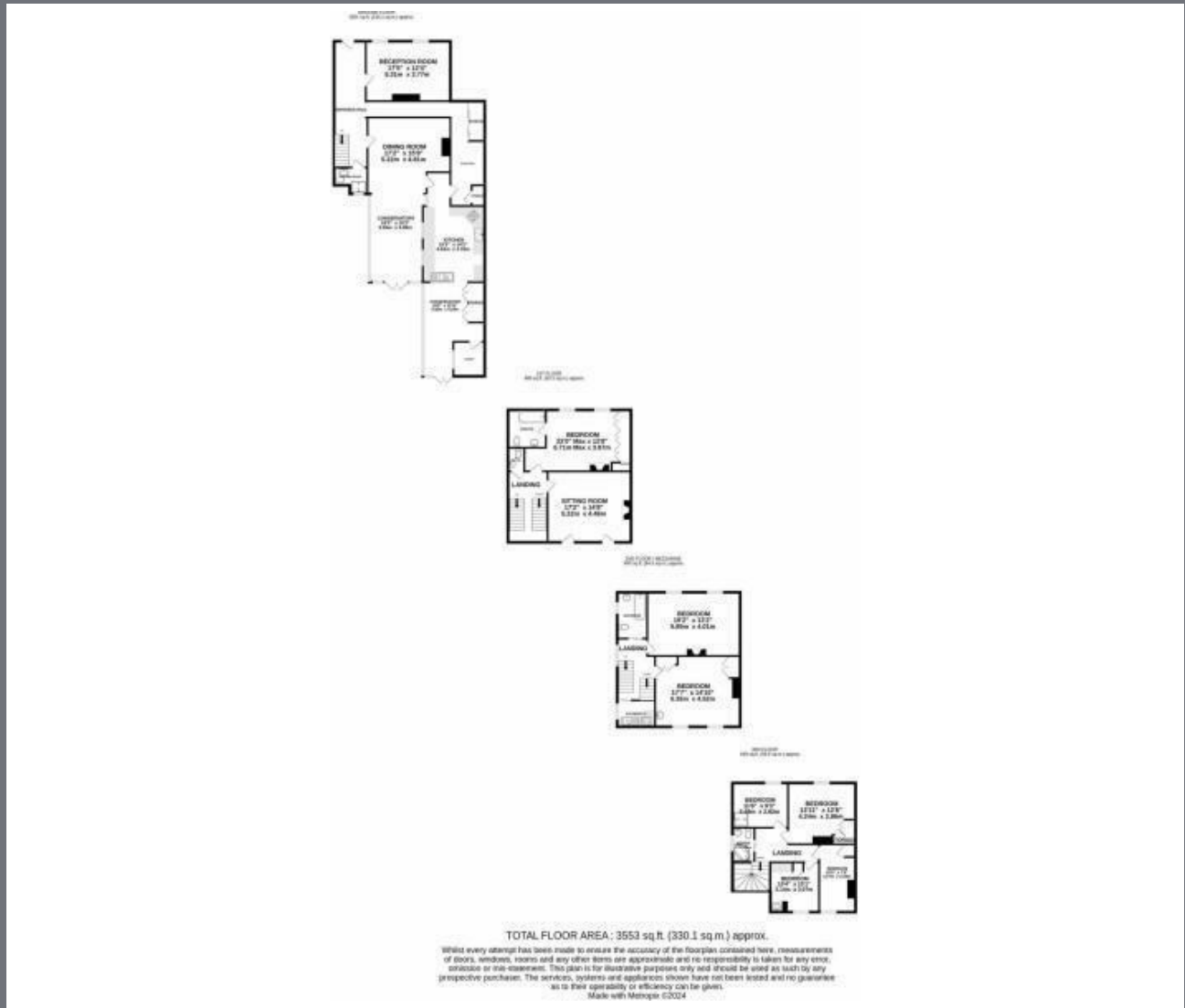
Machin Lane are delighted to present to the market, for the first time in over 30 years, this truly exceptional Grade II listed eight-bedroom semi-detached residence, ideally situated in the heart of historic Rochester.

Dating back to 1701, this remarkable home is steeped in history and character, originally serving as an









Energy Efficiency Rating		Current	Potential
Very energy efficient - lower running costs			
(92 plus) A			
(81-91) B			
(69-80) C			
(55-68) D			
(39-54) E			
(21-38) F			
(1-20) G			
Not energy efficient - higher running costs			
England & Wales		EU Directive 2002/91/EC	

2B Crow Lane
 Rochester
 Kent
 ME1 1RF
 01634 829080

admin@machin-lane.co.uk
<https://www.machin-lane.co.uk/>