



## Harrow Road, W2

### £550,000

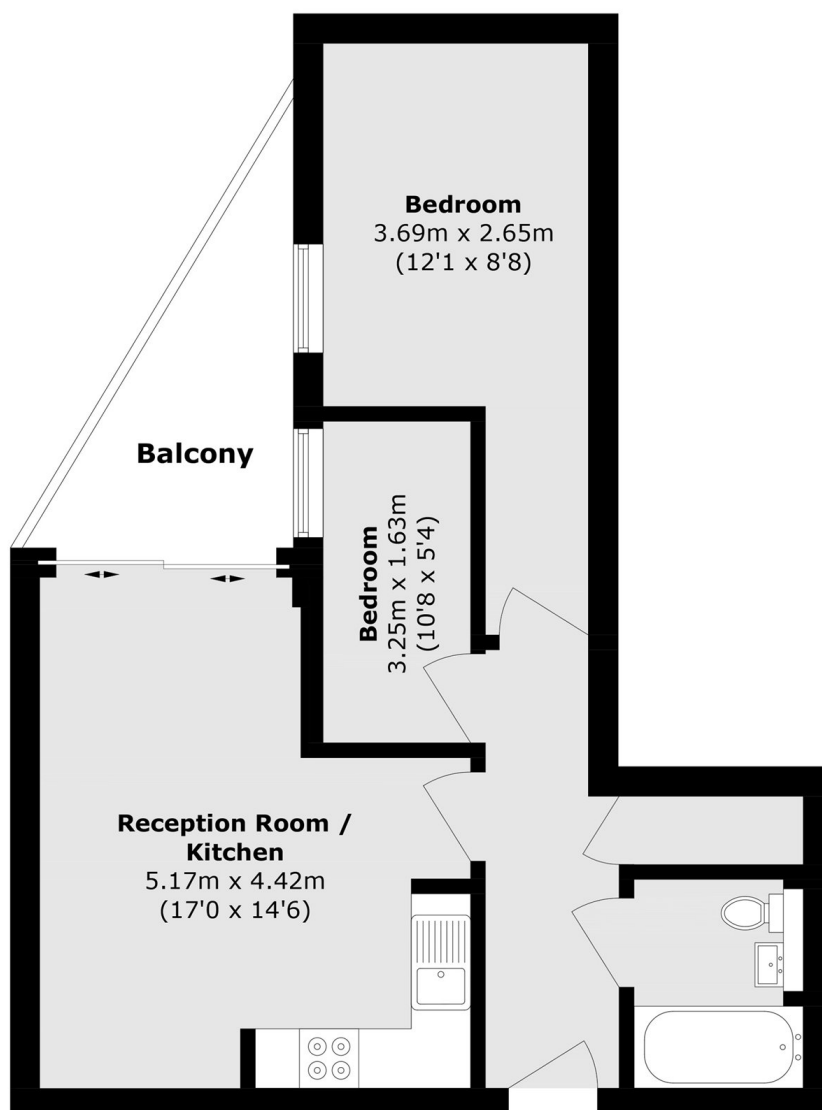
A two bedroom apartment in a purpose built modern block with a lift. The property has an open plan south facing reception leading out onto a private balcony, a spacious double bedroom, a family bathroom and a second bedroom perfect for guests or an office,

Ideally located within close proximity to Hyde Park benefitting from local access to shops and amenities nearby and transport links from Paddington Station.

### Features

- Two Bedrooms
- South Facing Reception
- Balcony
- Lift
- Open Plan
- Paddington

# Harrow Road, London, W2



Total area (approx.): 51.5 sq. m (554.3 sq. ft)  
Balcony area (approx.): 6.2 sq. m (66.7 sq. ft)