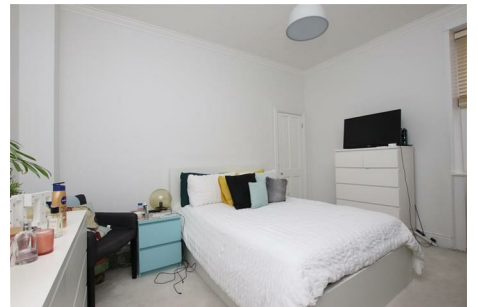




ASPIRE

— TO MOVE —



Upper Church Street, Bath, BA1

Video and physical viewings available. Stylish two bedroom second floor flat located on Upper Church Street, Bath. The property is available 25th August 2026 and is offered unfurnished.

Upper Church Street is located just North of Bath city centre just 0.1 miles from the Royal Crescent. Local shops can be found on Julian Road 0.1 miles away which include a co-op, corner shop, pub and cafe. Royal Victoria Park is 0.3 miles away.

£1,650 PCM

Upper Church Street, Bath, BA1

- Two bedroom flat
- Unfurnished
- Holding deposit - £380.00
- City central location
- Available August 2026
- Available to a single professional or professional couple only
- Access to local amenities
- Council Tax Band C

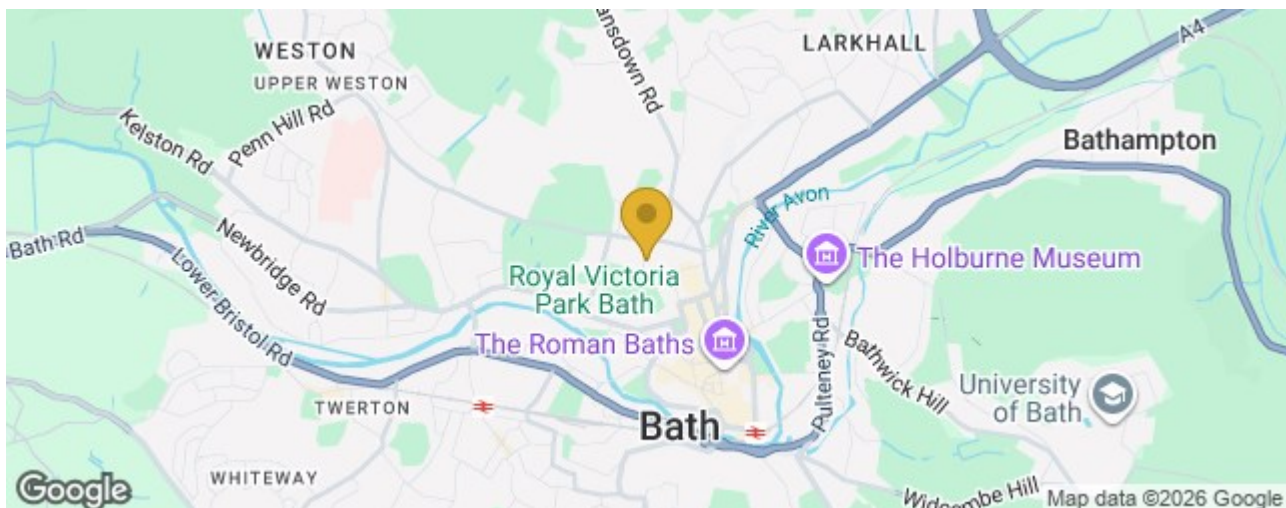
Video and physical viewings available. Stylish two bedroom second floor flat located on Upper Church Street, Bath. The property is available from August 25th 2026 and is offered unfurnished.

Upper Church Street is located just North of Bath city centre just 0.1 miles from the Royal Crescent. Local shops can be found on Julian Road 0.1 miles away which include a co-op, corner shop, pub and cafe. Royal Victoria Park is 0.3 miles away.

On entering the flat there is a spacious central hallway which provides access to all rooms. The kitchen has base and wall units, cooker, gas hob, extractor, and fridge/freezer. The living room is light and bright and has space for sofa, coffee table and dining room table. There are two double bedrooms both with storage cupboards. Bedroom one is located to the rear and bedroom two to the front. The bathroom has shower over bath, WC and sink. Please note the washing machine is not included.

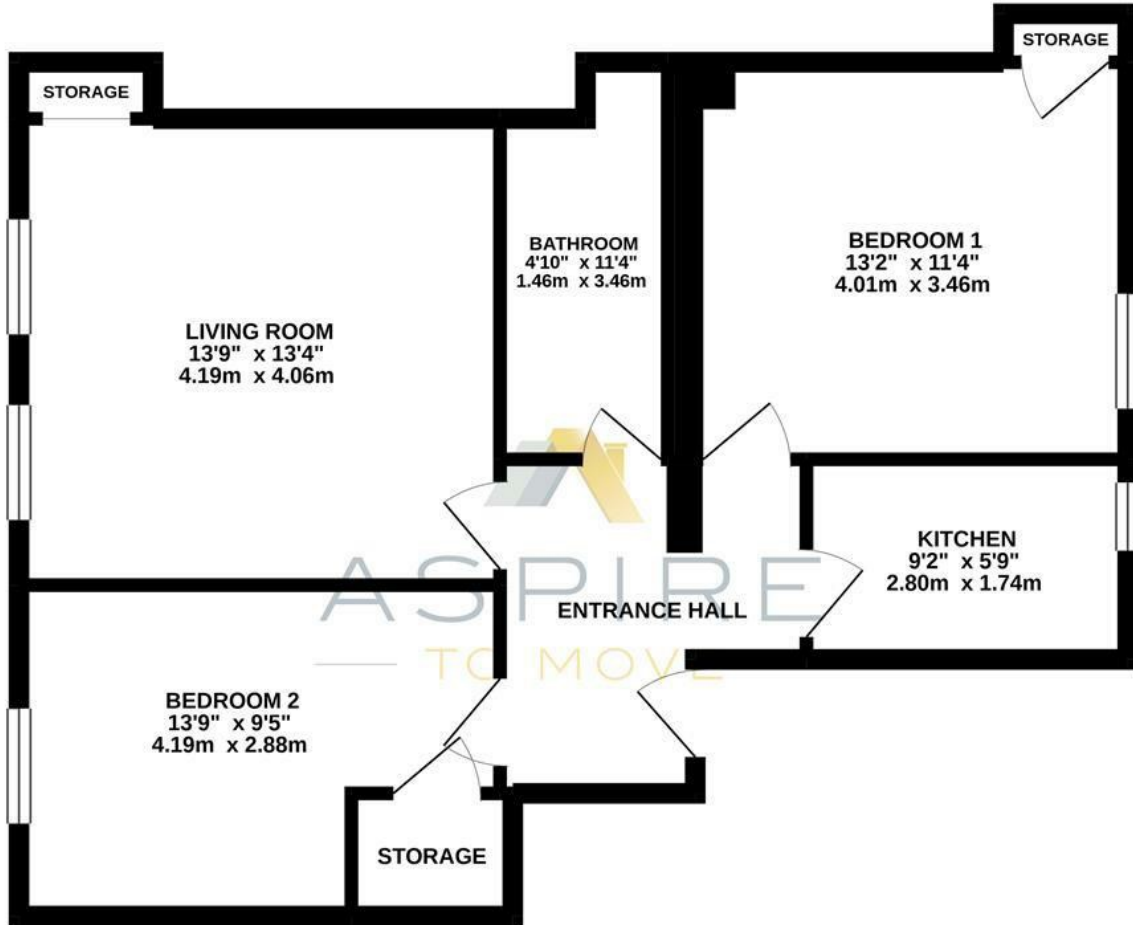
The flat is available from August 2026 and would best suit a professional couple, or single professional.

Council tax band C: £2,066.91





SECOND FLOOR
636 sq.ft. (59.1 sq.m.) approx.



UPPER CHURCH STREET, BATH, BA1

TOTAL FLOOR AREA : 636 sq.ft. (59.1 sq.m.) approx.

Whilst every attempt has been made to ensure the accuracy of the floorplan contained here, measurements of doors, windows, rooms and any other items are approximate and no responsibility is taken for any error, omission or mis-statement. This plan is for illustrative purposes only and should be used as such by any prospective purchaser. The services, systems and appliances shown have not been tested and no guarantee as to their operability or efficiency can be given.
Made with Metropix ©2021

These particulars, whilst believed to be accurate are set out as a general outline only for guidance and do not constitute any part of an offer or contract. Intending purchasers should not rely on them as statements of representation of fact, but must satisfy themselves by inspection or otherwise as to their accuracy. No person in this firms employment has the authority to make or give any representation or warranty in respect of the property.

