



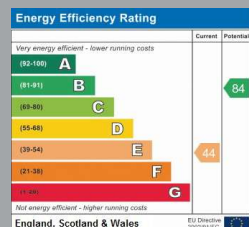
8 DEAN CLOSE
HAMWORTHY
Dorset, BH15 4NZ

£1,550 PCM

goadsby.com

A WELL PRESENTED SEMI-DETACHED HOUSE WITH DRIVEWAY, GARAGE & GARDEN

- Semi-Detached House
- Three Bedrooms
- Garden, Garage & Driveway
- Offered Unfurnished
- EPC Rating: Band E



Reference: 814333

Deposit Amount: £1,788.46

Council Tax Band: C

Furnishing: Unfurnished

Heating Type: Gas Central Heating

Parking: Driveway Parking

Utilities:

- Mains Supply Electricity
- Mains Supply Gas
- Mains Supply Water - metered

Drainage: Mains Supply Drainage

Broadband: Refer to Ofcom website
www.ofcom.org.uk/phones-and-broadband

Mobile Signal: Refer to Ofcom website
www.ofcom.org.uk/phones-and-broadband

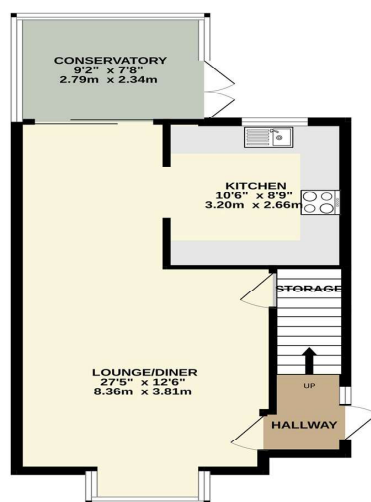
Flood Risk: For more information refer to
gov.uk, check long term flood risk
www.gov.uk/check-long-term-flood-risk



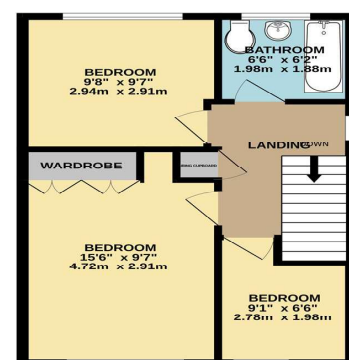
This well presented and spacious three bedroom semi-detached house is situated within a quiet cul-de-sac location in Hamworthy and is offered on an unfurnished basis. The property benefits from a spacious lounge/diner, modern kitchen and bathroom, conservatory leading to the sunny rear garden with driveway parking and detached single garage.

Please note the marketing photos for this property were taken before the current tenancy commenced in 2022

GROUND FLOOR



1ST FLOOR



This Floor Plan is for guidance only and is NOT to SCALE
 Made with Measure 10/2020

PLEASE NOTE:

Measurements quoted are approximate and for guidance only. Fixtures, fittings, services & appliances have not been tested and therefore no guarantee can be given that they are in working order. Images have been produced for information and it cannot be inferred that any item shown is included with the property. These particulars are believed to be correct but their accuracy is not guaranteed and they do not constitute an offer or form part of a contract. Solicitors are specifically requested to verify the sales particulars details in the pre-contract enquiries, in particular: price, local and other searches.

Goadsby & Harding (Residential) Ltd

Registered Office: 99 Holdenhurst Road, Bournemouth, Dorset BH8 8DY Registered in England No. 1871280

01202 686555
 poole@goadsby.com

245 High Street North
 Poole, Dorset
 BH15 1DX