



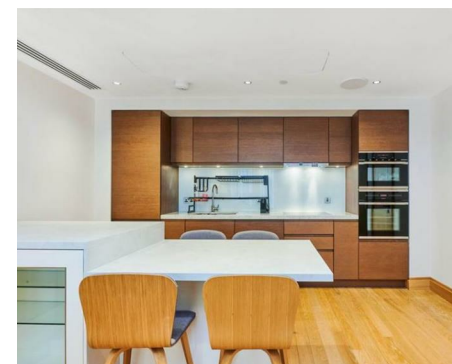
NEWINGTON  
LONDON

2 Bedrooms

Apartment

Located in London

£965 Per Month



[info@newingtonstates.com](mailto:info@newingtonstates.com)

<http://www.newingtonstates.com>

020 7724 2233



A well-presented two-bedroom apartment set within a well-managed portered building. The property offers a generously sized reception room, a large principal bedroom, a further double bedroom, a fully fitted kitchen and a family bathroom. Situated on the fifth floor with lift access, the apartment benefits from communal heating and hot water as well as 24-hour concierge services.

Ideally located close to the open spaces of Regent's Park and within easy reach of Marylebone and Baker Street Underground stations.

EPC rating: C

## Energy Efficiency Rating: C

Agents Note: Whilst every care has been taken to prepare these particulars, they are for guidance purposes only. All measurements are approximate and are for general guidance purposes only and whilst every care has been taken to ensure their accuracy, they should not be relied upon and potential buyers/tenants are advised to recheck the measurements.

# NEWINGTON LONDON

60 Upper Montagu Street

London

W1H 1SN

020 7724 2233

[info@newingtonstates.com](mailto:info@newingtonstates.com)

<http://www.newingtonstates.com>