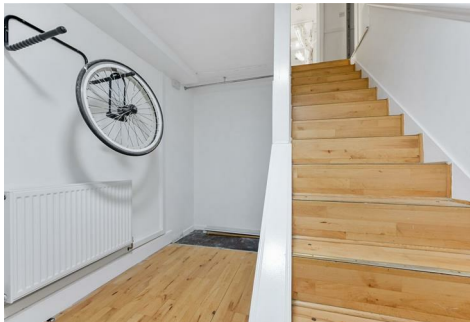


MATTHEW JAMES

Residential Sales • Lettings • Management



263 Weedington Road, London, NW5 4PR

£3,100 Per Month

A recently decorated top floor purpose built apartment with large lounge, kitchen breakfast room, three double bedrooms and a huge private terrace.

The property offers great space within easy access to Parliament Hill Fields, Chalk Farm and Gospel Oak.

A great opportunity to secure this bright and spacious home.

Top Floor

Large Lounge



Bedroom Two



Bedroom Three



Kitchen Breakfast Room



Bathroom



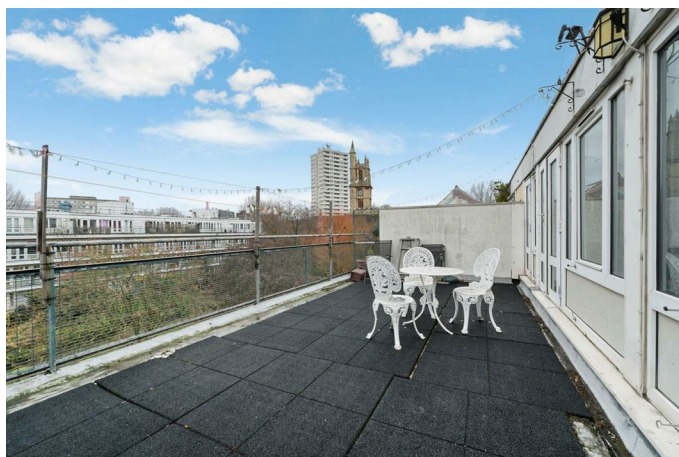
Bedroom One



Shower Room



Large Terrace



Additional Information

Available January 2026

EPC Rating C

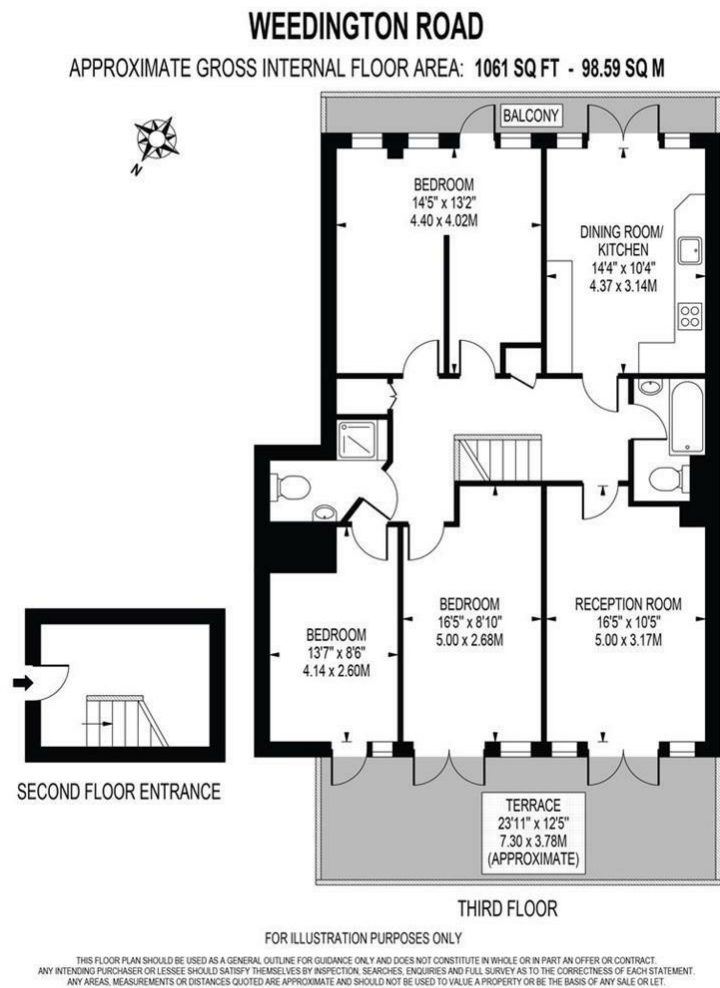
Camden Council Tax D

Long Term Tenants sought

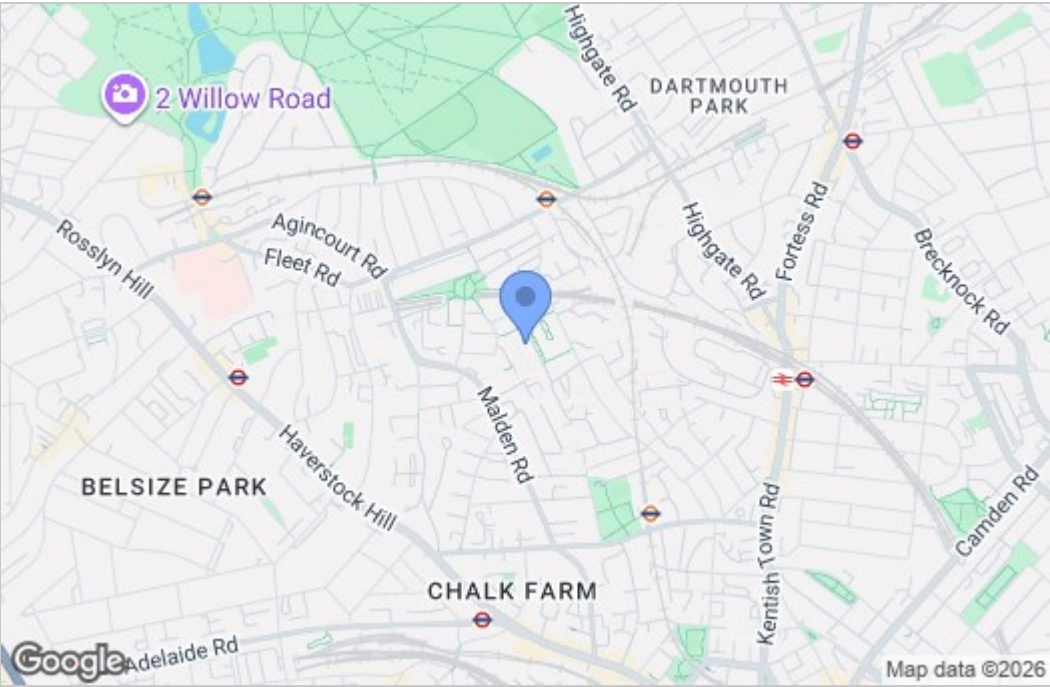
Holding deposit of 1 weeks rent required

Full deposit of 5 weeks rent required

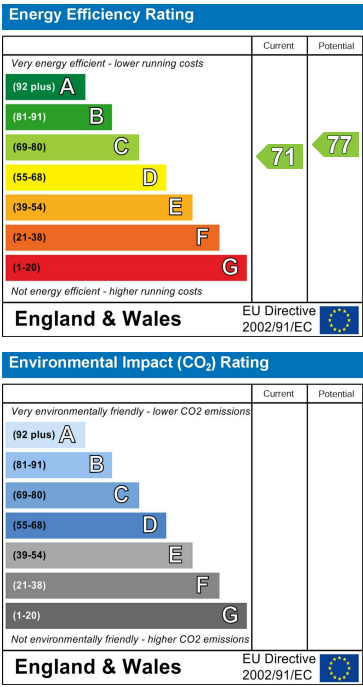
Floor Plan



Area Map



Energy Efficiency Graph



These particulars, whilst believed to be accurate are set out as a general outline only for guidance and do not constitute any part of an offer or contract. Intending purchasers should not rely on them as statements of representation of fact, but must satisfy themselves by inspection or otherwise as to their accuracy. No person in this firm's employment has the authority to make or give any representation or warranty in respect of the property.