



## CHARLTON CHURCH LANE, SE7

£300,000

Flat  
Two bedrooms  
One bathroom  
Garden  
Chain free  
Energy rating: D

@marshandparsons  
marshandparsons.co.uk

MARSH &  
PARSONS



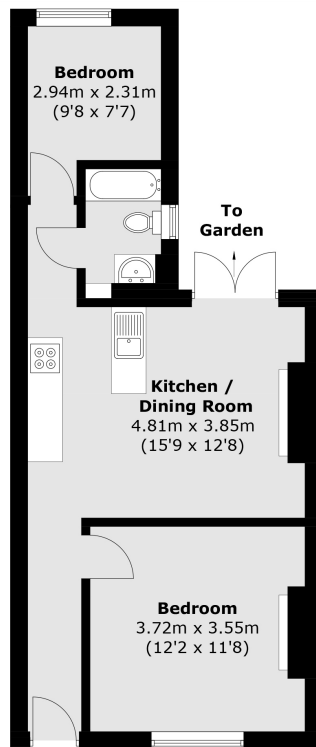
# ABOUT THE PROPERTY

A lower ground floor flat located a few minutes away from Charlton station. It has a private front door, an open plan kitchen/living room with french doors leading to a private rear garden, one double bedroom to the front and one single bedroom to the rear, and a white bathroom with shower.

The flat is chain free and is very close to the station, direct bus routes to North Greenwich Tube and the retail shopping park: an amazingly convenient location!



# STEP INSIDE CHARLTON CHURCH LANE



## Ground Floor

Total area (approx.): 46.8 sq. m (503.7 sq. ft)

**Charlton**  
020 8293 0454

Energy Rating: D We aim to make our particulars both accurate and reliable. However, they are not guaranteed; nor do they form part of an offer or contract. If you require clarification on any points then please contact us, especially if you're traveling some distance to view. Please note that appliances and heating systems have not been tested and therefore no warranties can be given as to their good working order

**MARSH &  
PARSONS**