



Car Park Adjacent to 306 Wigan Road
Ashton-In-Makerfield, Wigan, WN4 0BS

APPROX 0.18 AC.

Full Planning for 3 x retail units

GUIDE PRICE - OFFERS OVER Offers Over
£200,000

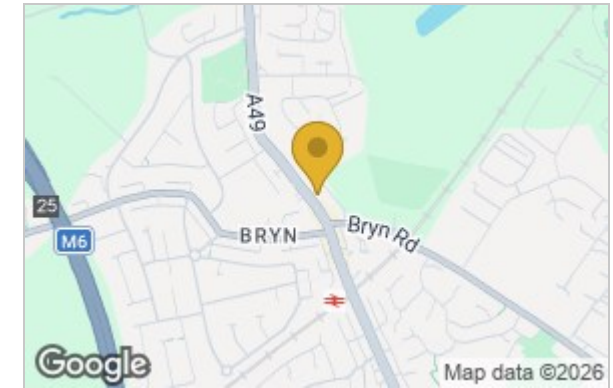
Car Park adjacent to 306 Wigan Road, Ashton-In-Makerfield, Wigan, WN4 0BS

Situated on Wigan Road in Ashton-In-Makerfield, this prime piece of land presents an exceptional commercial development opportunity. Spanning approximately 0.18 acres, the site is strategically located near a bustling crossroads, ensuring high visibility and accessibility. The area is well-served by local amenities, including a convenience store and various eateries, making it an attractive location for potential businesses.

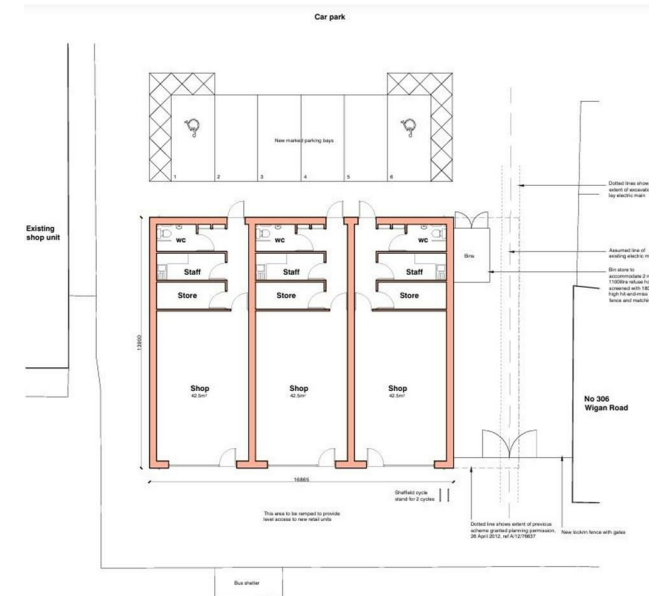
The property comes with full planning permission for the erection of a single-storey detached building, which will house three retail units (Planning Reference: A/23/95258/FULL). This development is designed to cater to the growing demand for retail space in the area, providing an excellent opportunity for investors and entrepreneurs alike. Additionally, the plans include designated parking spaces, enhancing convenience for both customers and tenants.

With a leasehold of 999 years, this land offers a long-term investment prospect in a thriving community. The combination of its prime location, planning permissions, and the potential for diverse retail opportunities makes this property a compelling choice for those looking to make their mark in the commercial sector. Do not miss the chance to explore this promising venture in Ashton-In-Makerfield.

Area Map



Proposed Site Plan



These particulars, whilst believed to be accurate are set out as a general outline only for guidance and do not constitute any part of an offer or contract. Intending purchasers should not rely on them as statements of representation of fact, but must satisfy themselves by inspection or otherwise as to their accuracy. No person in this firm's employment has the authority to make or give any representation or warranty in respect of the property.