



Connells

Risedale Hill
Hemel Hempstead



Property Description

Beautifully presented and spacious three-bedroom mid-terrace family home, ideally located in the sought-after HP3 area of Risedale Hill, Hemel Hempstead. Offering approximately 900sq. ft of well-designed accommodation, this home combines modern living with comfort, making it perfect for families. The property benefits from a private driveway providing parking for up to three vehicles, a rare and highly desirable feature.

Internally, the home offers two versatile reception rooms, ideal for both relaxing and entertaining. The modern fitted kitchen/diner serves as the heart of the home, finished to a high standard and perfect for everyday family life. Upstairs, there are three well-proportioned bedrooms alongside a stylish, newly fitted family bathroom, creating a practical and comfortable living space.

Externally, the property boasts a beautifully landscaped south-east facing rear garden, featuring a patio area, well-maintained lawn, and a brick-built shed with power and lighting. Conveniently located close to the Town Centre, Apsley Village, well-regarded schools, and the mainline station with direct links to London Euston, this is an ideal family home in a prime location.



Front Garden

Communal side alleyway providing convenient access, along with a driveway offering off-road parking for three vehicles.

Entrance Hall

Single glazed double doors, radiators, stairs leading to the first floor, and useful under-stairs storage.

Reception Room

Double glazed window to the front aspect, radiator, TV point, and an elegant gas fireplace creating a stylish focal point to the room.

Kitchen/Diner

Double glazed window and French doors opening onto the garden, the kitchen is fitted with an integrated oven and gas hob. There is space for a washing machine, tumble dryer, and fridge freezer, along with a radiator and useful storage cupboard. Finished with stylish cabinetry, complementary worktops, and a splashback, creating a sleek and contemporary kitchen space.

Landing

Airing cupboard housing the boiler, along with loft access with pull down loft ladder and light providing additional storage.

Bedroom 1

Carpeted flooring, double glazed window, radiator and TV point.

Bedroom 2

Carpeted flooring, double glazed window, radiator, fitted wardrobes and TV point.

Bedroom 3

Carpeted flooring, storage cupboard, double glazed window, radiator and TV point.

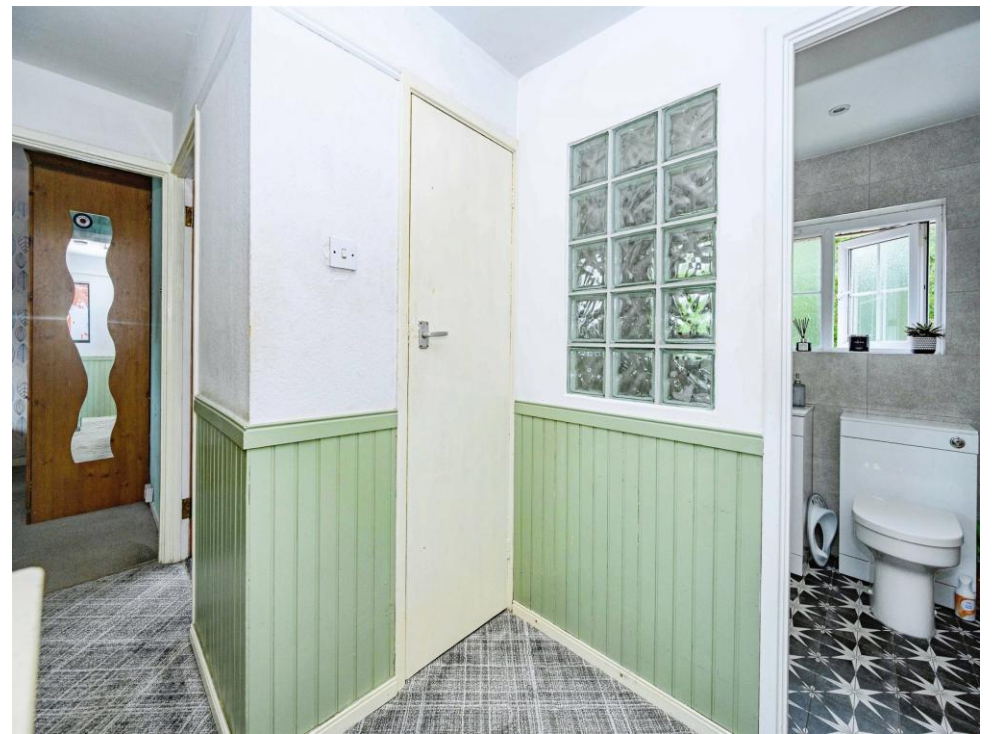
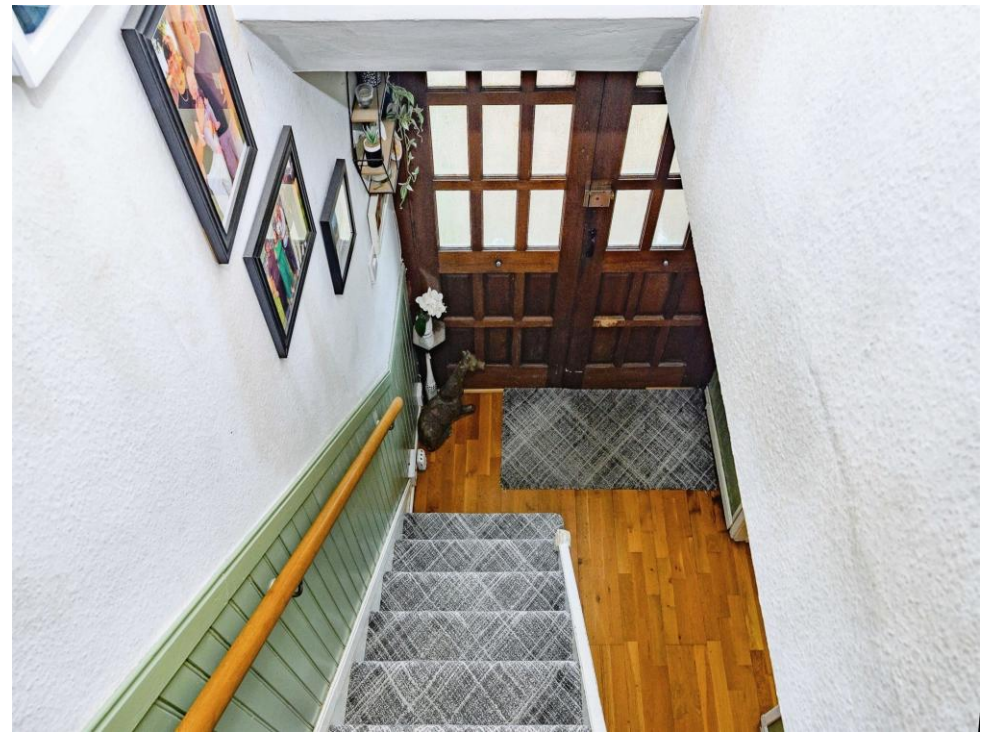
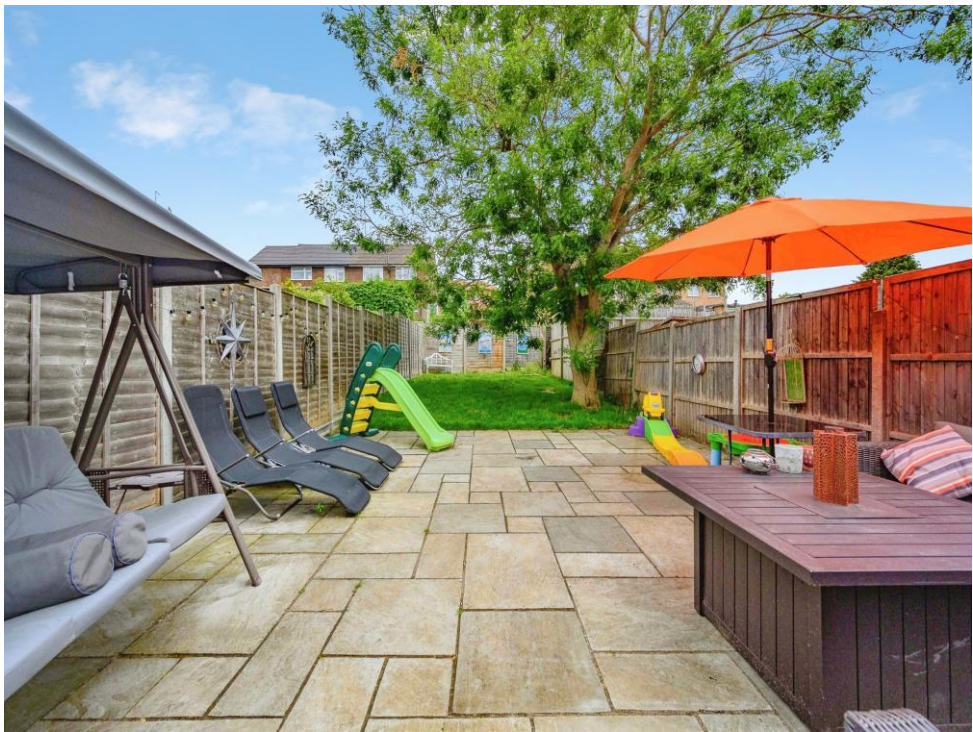
Bathroom

Fully tiled modern and sleek bathroom comprising a double glazed window, WC, bath with overhead shower, wash hand basin, and radiator.

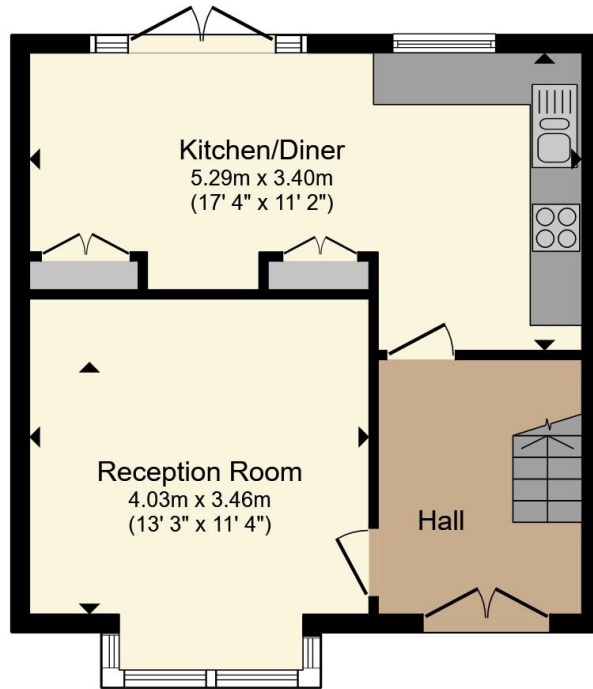
Rear Garden

Side access leading to a patio area with steps rising to a well-maintained lawn, along with a second patio seating area. Further benefits include an external electric point and outside tap. There is also a brick-built shed with power, ideal for storage or workshop use.

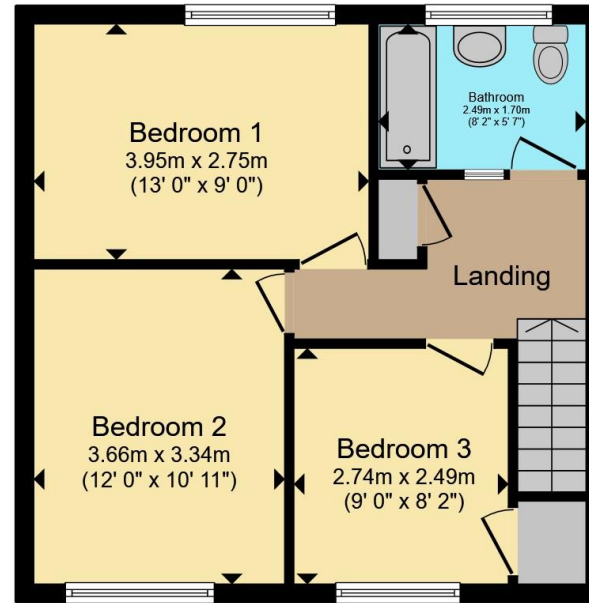








Ground Floor



First Floor

Total floor area 84.6 m² (911 sq.ft.) approx

This floor plan is for illustrative purposes only. It is not drawn to scale. Any measurements, floor areas (including any total floor area), openings and orientation are approximate. No details are guaranteed, they cannot be relied upon for any purpose and they do not form part of any agreement. No liability is taken for any error, omission or misstatement. A party must rely upon its own inspection(s). Powered by www.propertybox.io



To view this property please contact Connells on

T 01442 216 633

E hemel Hempstead@connells.co.uk

45 Marlowes
HEMEL HEMPSTEAD HP1 1LD

EPC Rating: C Council Tax
Band: C

Tenure: Freehold

view this property online connells.co.uk/Property/HEM312822



1. MONEY LAUNDERING REGULATIONS Intending purchasers will be asked to produce identification documentation at a later stage and we would ask for your co-operation in order that there will be no delay in agreeing the sale. 2. These particulars do not constitute part or all of an offer or contract. 3. The measurements indicated are supplied for guidance only and as such must be considered incorrect. Potential buyers are advised to recheck measurements before committing to any expense. 4. We have not tested any apparatus, equipment, fixtures, fittings or services and it is in the buyers interest to check the working condition of any appliances.

Connells Residential is registered in England and Wales under company number 1489613, Registered Office is Cumbria House, 16-20 Hockliffe Street, Leighton Buzzard, Bedfordshire, LU7 1GN. VAT Registration Number is 500 2481 05.

See all our properties at www.connells.co.uk | www.rightmove.co.uk | www.zoopla.co.uk

Property Ref: HEM312822 - 0003