

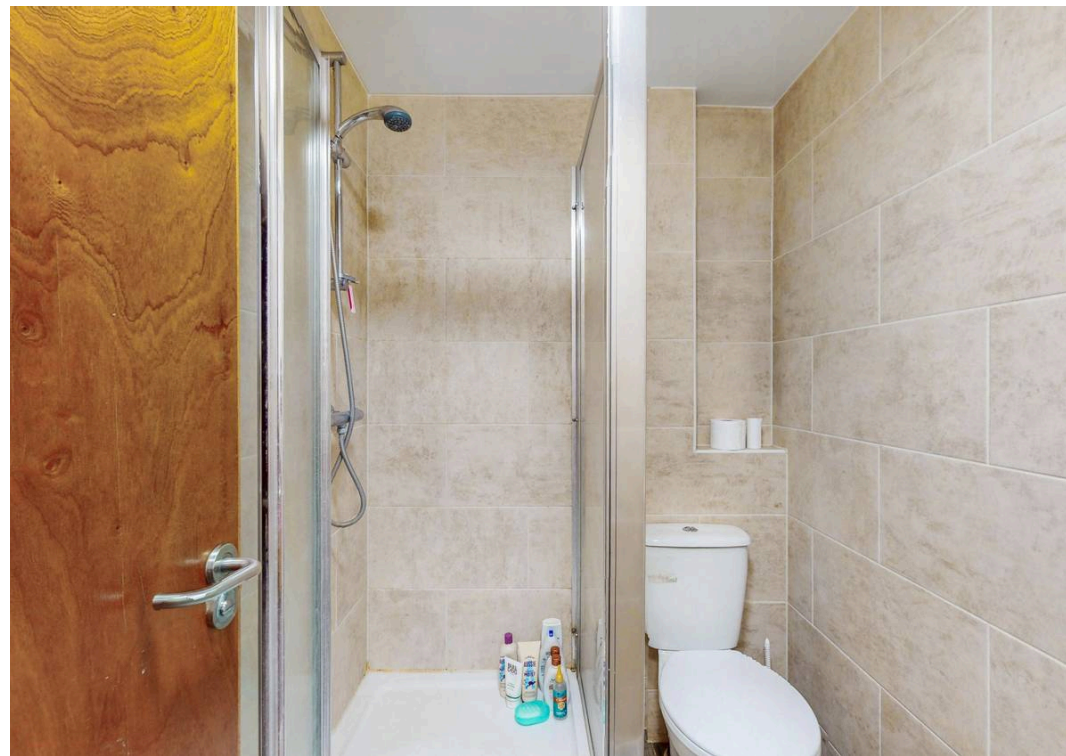


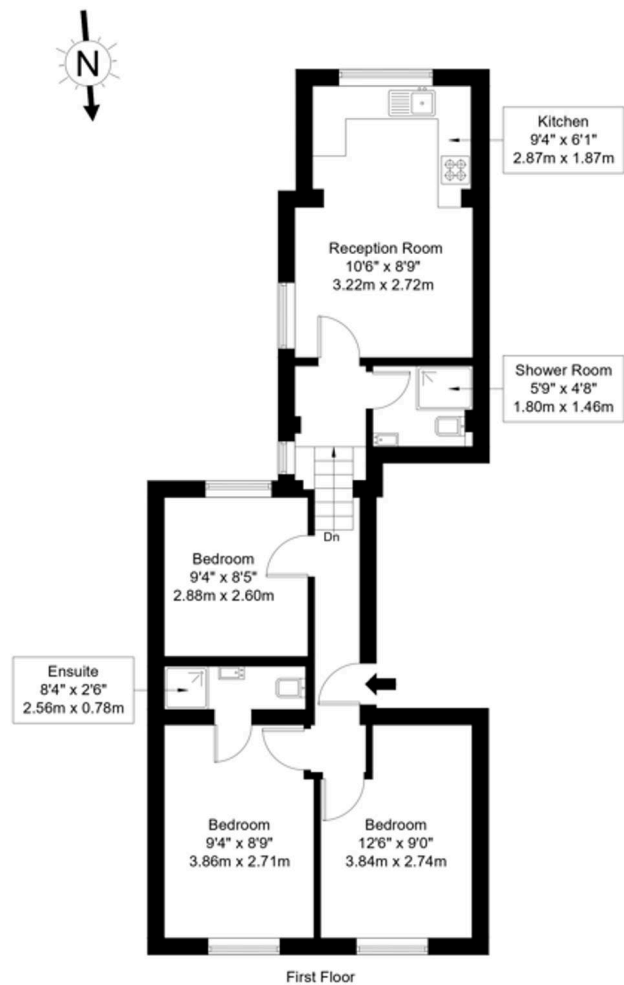
Kilburn Lane, London, W9
£3,100 pcm

Kilburn Lane, London, W9.

A spacious and well-presented three bedroom, two bathroom flat located on Kilburn Lane in the popular Queens Park area. The property offers generous living space throughout, with well-proportioned bedrooms and two modern bathrooms, making it ideal for sharers. The flat comes fully furnished and is ready to move into, offering a comfortable and practical living environment. Conveniently situated close to local shops, cafés, and amenities, with excellent transport links nearby and easy access to Queens Park. Available mid March.







Ref :

Copyright **BLEU
PLAN**

The Floor plan is not to scale and measurements and areas shown are approximate and therefore should be used for illustrative purposes only. The plan has been prepared in accordance with the RICS code of Measuring Practice and whilst we have confidence in the information produced it must not be relied on. Maximum lengths and widths are represented on the floor plan. If there is any aspect of particular importance, you should carry out or commission your own inspection of the property.
Copyright @ BLEUPLAN

Black Katz

22 West Hampstead Mews, London - NW6 3BB

02073285000 • Thomas@blackkatz.com • blackkatz.com/