

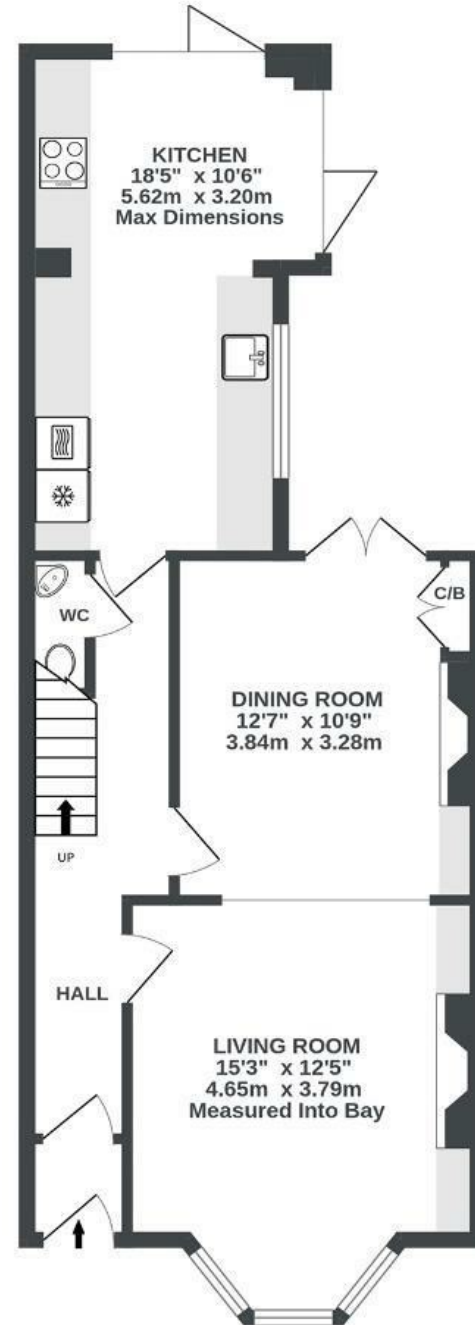
Kingston Road

SOUTHVILLE

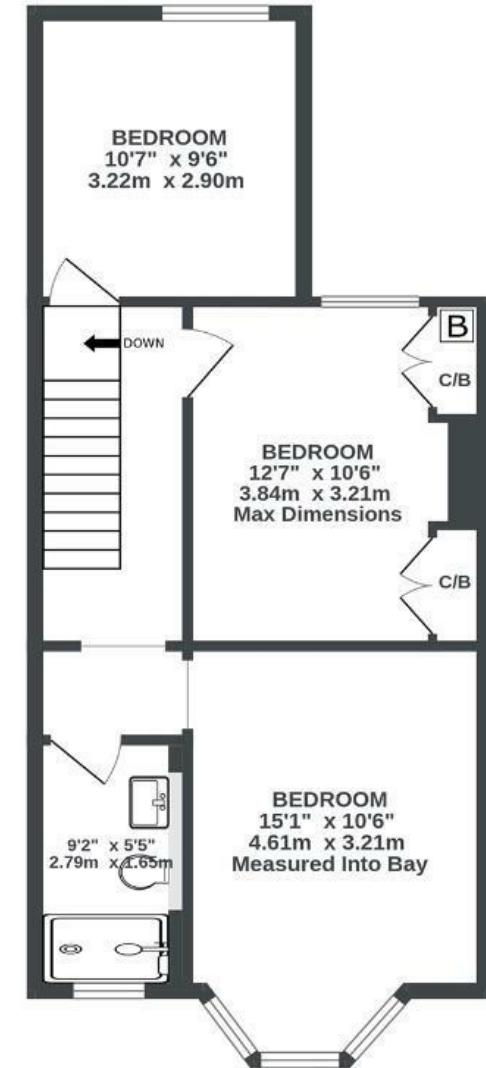
APPROXIMATE FLOOR AREA
101 SQM / 1087 SQFT



GROUND FLOOR
577 sq.ft. (53.6 sq.m.) approx.



1ST FLOOR
510 sq.ft. (47.3 sq.m.) approx.



Illustrations are for reference purposes only, measurements are approximate, not to scale.

Boardwalk

Kingston Road , BRISTOL

£

£600,000



BS3 1DS

zZz

3 Bedrooms



2 Bathrooms

"We've loved living in Southville. North Street is just around the corner, with so many great cafés, restaurants and pubs, and we often pop down to Wapping Wharf for a coffee or head over to Ashton Court for a walk. The house has loads of character and the kitchen extension is really the heart of the home, where everyone naturally comes together. It's been a great first family home and somewhere we've really loved living."

