



ZAFER CETINEL POWERED BY **exp** TM UK

@ zafer.cetinel@exp.uk.com

zafercetinel.exp.uk.com

01242 374 844

Linden Avenue, Prestbury, Cheltenham, GL52 3DS

£340,000

🛏️ 2 🚿 1 🚗 1

- LINDEN AVENUE, PRESTBURY, CHELTENHAM
- QUIET CUL DE SAC LOCATION
- WALKING DISTANCE TO PRESTBURY VILLAGE AND SHOPS
- GREAT WALKS NEAR BY INCLUDING AROUND THE RACECOURSE
- TWO DOUBLE BEDROOMS
- NEW SHOWER ROOM
- READY TO MOVE IN
- SOUTH FACING GARDEN AT REAR AND PLENTY OF PARKING IN FRONT
- CHAIN FREE
- ZAFER CETINEL

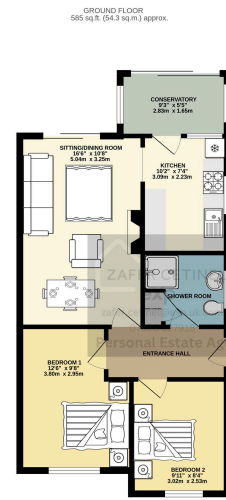


Welcome to this beautifully presented bungalow located in a tranquil cul-de-sac on Linden Avenue, Prestbury. Just a short walk to the village, shops, and pubs, this home offers stunning walks nearby, including Cheltenham Racecourse right at your doorstep.

Featuring an entrance hall, a newly fitted shower room, two double bedrooms, and a bright kitchen with a conservatory, the property also includes a spacious lounge/diner with French patio doors leading to a lovely rear garden.

With ample parking at the front, a private garden with patio and decking areas, and features like double glazing and a modern Worcester Bosch boiler, this home is in excellent condition and ready for its next owner. Offered chain-free for a seamless move!





TOTAL FLOOR AREA: 585 sq. ft. (54.3 sq.m.) approx.
We warrant every measurement to be based on a true and correct survey. The accuracy of all figures contained herein, representations, or statements, including those made by third parties, shall be deemed to be the responsibility of the agent for the time being. The agent's liability is limited to the amount of the fee paid for the service. The agent's liability is limited to the amount of the fee paid for the service. The agent's liability is limited to the amount of the fee paid for the service.

