



TRINITY

TROWBRIDGE

A COLLECTION OF SEVEN EXCLUSIVE HOMES WITH ORIGINAL FEATURES

# Trinity is a landmark conversion offering seven character-led homes shaped by light, space and architectural detail.

**Trinity, Trowbridge offers a rare opportunity to own a home defined by volume, light and architectural character. This former 19th-century school has been thoughtfully converted into just seven distinctive homes, combining striking original features with the ease and efficiency of modern living.**

Built in the late 1800s, the building's solid stone construction and dramatic window openings have been carefully preserved, creating homes that feel both impressive and practical — rich in heritage, yet designed entirely for today.

## **A Building with Presence, Designed for Today**

The character of Trinity is immediately apparent. Original stone elevations, striking arched windows and strong rooflines

reflect the building's historic past, while inside, generous ceiling heights and dramatic window openings create light-filled living spaces with real volume.

These are not standard homes. The proportions reflect the building's former life — wide spans, tall ceilings and impressive glazing that bring both light and individuality to each home.

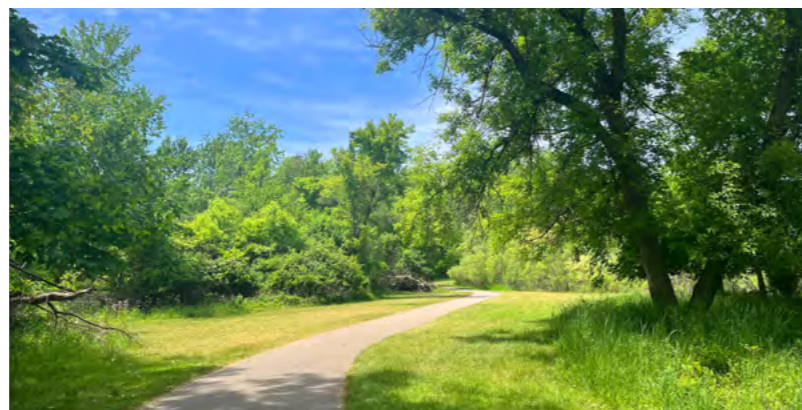
The seven homes offer two and three bedroom, two-storey layouts, each with well-balanced open-plan kitchen, dining and living areas. The floor plans provide flexibility for home working, entertaining and everyday family life, making them equally suited to first-time buyers and those looking to downsize without compromise. Every home benefits from its own private courtyard garden and allocated parking, combining character living with practical convenience.

Conversions of this scale and quality are rare in the town. Trinity offers the chance to own a home with architectural identity — something distinctive, solid and enduring — while enjoying the ease of low-maintenance modern living.

For buyers seeking space, light and originality within a well-connected Wiltshire location, Trinity presents a genuinely individual alternative to conventional new-build homes.







From top left:

Roast and Toast is reviewed as "a gem of a café."

The new East Wing Leisure Centre will provide enhanced facilities including a six-lane pool and fully equipped gym.

Biss Meadow Country Park is a serene oasis, offering picturesque walking paths alongside rivers and fields.

Valeroso Lounge offers a great range of food and drinks in a welcoming, laid back space.



## As Wiltshire's county town, Trowbridge brings together established amenities, independent spirit and generous green space.

The town centre provides a broad mix of independent retailers and recognised high street names, alongside a confident café and dining scene. From relaxed lunches at Valeroso Lounge to local favourites such as Avonfield Kitchen and Roast and Toast Café, there is variety without pretension, complemented by leisure options including the Odeon cinema. Weekly markets on Fore Street bring local produce and artisan traders into the heart of town, reinforcing Trowbridge's long-standing market heritage.

Leisure and wellbeing are well catered for. The town benefits from modern sports facilities, gyms, a cinema and community clubs, while the new East Wing Leisure Centre will further enhance an already well-served town centre — adding a six-lane swimming

pool, extensive fitness facilities and flexible studio space.

For commuters, Trowbridge is exceptionally well connected. The railway station sits within walking distance of Trinity and provides direct services to Bath Spa in around 20 minutes and Bristol Temple Meads in just over half an hour. Road links across Wiltshire and into Somerset and Bristol are equally straightforward.

Green space is part of daily life here. Biss Meadows Country Park stretches from the town centre along the River Biss, offering riverside walks and open parkland. Southwick Country Park provides extensive countryside just minutes away, while the Kennet & Avon Canal connects Trowbridge to Bath and beyond via scenic walking and cycling routes.

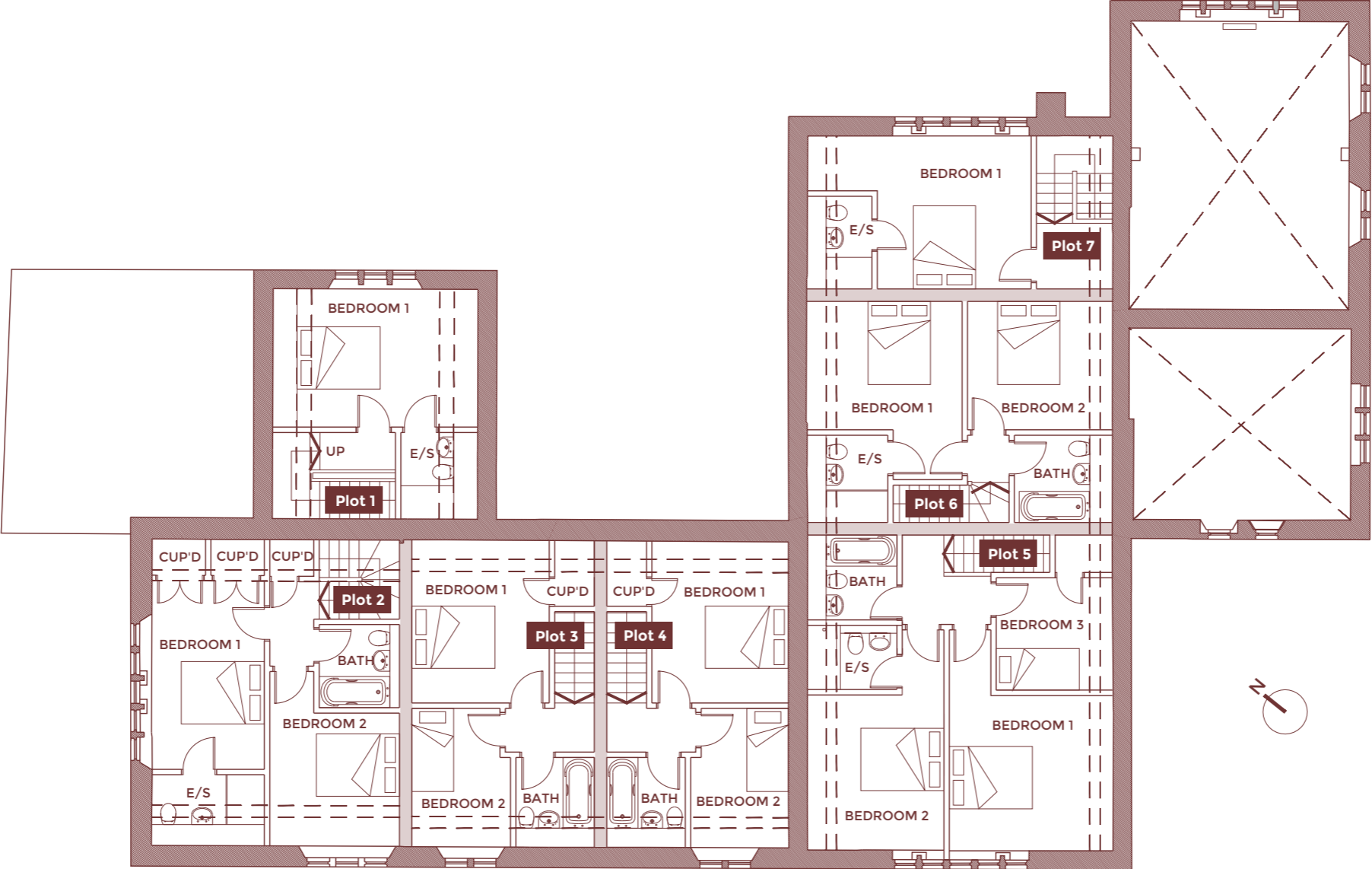
Families are supported by a range of primary and secondary schools, alongside sports clubs and community organisations that contribute to a strong and established local identity.

Living in Trowbridge offers something reassuringly complete: a well-connected county town with infrastructure, green space and amenities already in place — providing the balance of accessibility and everyday ease that modern living demands.

GROUND FLOOR



FIRST FLOOR





A thoughtful balance of heritage and refinement, where original architectural features are elevated through a carefully considered specification.

From dramatic arched glazing to beautifully appointed interiors, each detail has been selected to enhance both character and comfort—creating spaces that feel as impressive as they are effortless to live in.



CCIs for illustrative purposes.



Address:

Trinity  
Park Street,  
Trowbridge  
Wiltshire  
BA14 0AU

what3words:

wing.pays.anyway

DISTANCE & TIMINGS:

Trowbridge Rail Station  
Stallard St, Trowbridge BA14 8HW

0.4 mile / 10 min walk

Trowbridge East Wing Leisure Centre  
Bythesea St, Trowbridge BA14 8JQ

0.5 mile / 12 min walk

Valeroso Lounge  
St Stephen's Pl, Trowbridge BA14 8AH

0.6 mile / 14 min walk

Roast and Toast  
3 Market St, Trowbridge BA14 8EY

0.7 mile / 16 min walk

Biss Meadow Country Park  
20 Old Farm Rd, Trowbridge BA14 6FP

1 mile / 23 min walk

## SPECIFICATION

The interior of every space at Trinity is influenced by contemporary aesthetics and finished to exacting standards.

### KITCHENS

Wren Infinity Linea Kitchen and laminate worktops, available in a range of colours as standard.

The option to upgrade and customise further, subject to build stage.

Beko single stainless oven and ceramic hob, CDA extractor hood, Matrix fridge/freezer (integrated), stainless steel sink and tap and AEG dishwasher (integrated) all included as standard.

There is the option to upgrade appliances, subject to build stage.

### WC/CLOAKROOMS

Porcelanosa tiling, which can be customised upon request.

Cloakrooms will include, as standard, a Roper Rhodes back to wall toilet, with hidden cistern, chrome dual flush plate and soft-close seat and a Roper Rhodes wall mounted semi pedestal basin with Vado chrome mixer tap and waste.

All of which can be customised/ upgraded upon request, subject to build stage.

### BATHROOM/ENSUITE

Porcelanosa tiling, which can be customised upon request.

Main bathrooms, as standard, will include a Roper Rhodes close coupled toilet with a soft-close seat, a white single-ended bath with chrome tap and shower attachment, a 500mm white wall-hung vanity unit with chrome tap and waste. Bathrooms will also include a mirror with built in light.

Ensuites, as standard, will include a Roper Rhodes back to wall toilet with hidden cistern, chrome dual flush plate and soft close seat, a 500mm white wall-hung vanity unit with chrome tap and waste and a shower tray with chrome and glass enclosure, chrome mixer shower with overhead spout. Ensuites will also include a mirror with built in shaver socket.

All of which can be customised/ upgraded upon request, subject to build stage.

### INTERIOR FINISHES

White painted interior doors with chrome handles and hinges as standard, with the option to upgrade to oak or a different painted finish, subject to build stage.

Flooring included as standard - Cormar Apollo Plus carpets in the bedrooms (full colour range available to choose from), 6mm underlay, Quickstep Elka laminate flooring in living spaces (several colour options available to choose from) - upgrades also available, subject to build stage. All bathrooms and ensuites will have tiled flooring, as standard - to match wall tile range chosen.

White plastic sockets and switches as standard, with the ability to upgrade these to chrome/brass/polished steel, subject to build stage. Customisations to include USB sockets also possible, subject to build stage.

The standard lighting range will include pendants in all bedrooms, hallways and living areas. Downlights to be installed in kitchens, cloakrooms, bathrooms and ensuites. Electrical upgrades are very much dependant on the stage of build, with the potential to add additional downlights and feature lights as buyer upgrades.

All walls, ceilings and woodwork will be painted white as standard. Again, customisation is possible, subject to build stage.

### HEATING/ELECTRICS

Gas central heating - Alpha ETEC 28Kw combi boilers with 7 year warranties.

### EXTERIORS

Private parking to all plots.

Private gardens to all plots with hedging and sandstone patios, as standard. Landscaping upgrades available, subject to build stage.

### WARRANTY

Architect's certificate with Bolingbroke Design.

**STONE  
DEVELOPMENTS  
WILTSHIRE LIMITED**

Founded in 2014 by Craig and Kerry Stone, Stone Developments has delivered over 90 thoughtfully designed homes and properties across Wiltshire. Working with a trusted network of local craftsmen and professionals, the business has built a strong reputation for securing planning opportunities and delivering high-quality developments with meticulous attention to detail.

Visit: [sdwl.co.uk](http://sdwl.co.uk)

REGISTER YOUR INTEREST NOW



CALL **07886 214 323**

EMAIL [enquiries@flowerproperty.co.uk](mailto:enquiries@flowerproperty.co.uk)

INSTA [@flowerpropertybath](https://www.instagram.com/flowerpropertybath)

VISIT [flowerproperty.co.uk](http://flowerproperty.co.uk)

All CGI images and floor plans are designed to give an impression of the development and our housetypes - they may not reflect a specific plot and do not form part of any contract. Final finishes, landscaping and detail will vary. This information has been provided in good faith, however all layouts and measurements are approximate only. Some house types include areas of reduced headroom. Bathroom and kitchen layouts are indicative only and designs may change due to our process of continuous product development. Images used in marketing materials may be computer generated or photography of previous developments. Maps are not to scale. Travel times and distances quoted are approximate only.

Stone Developments subscribe and comply with the Consumer Code for Home Builders.

Creation and Design by Oakfield D. [oakfield-dc.com](http://oakfield-dc.com)