



3 Swards Farm Cottages | Brickendon | Hertford | SG13 8NY

£2,150 pcm

A fabulous semi-rural retreat for this recently refurbished three double bed roomed country home. Views across farmland to both front and rear, with driveway parking for two vehicles. 100' of rear garden. Spacious accommodation arranged over three levels. Immaculate presentation. Unfurnished. EPC rating-E Council Tax band -E Deposit equal to one month rent.

- Country home
- Three double bedrooms
- Recently refurbished
- Approx 100' rear gardens
- Driveway parking for two vehicles



Property Description

ENTRANCE HALL

LIVING ROOM

15' 1" x 11' 4" (4.6m x 3.45m)

KITCHEN

15' 1" x 11' 4" (4.6m x 3.45m)

UTILITY ROOM

7' 5" x 4' 8" (2.26m x 1.42m)

SHOWER ROOM

7' 20" x 7' 0" (2.64m x 2.13m)

FIRST FLOOR LANDING

BEDROOM ONE

17' 0" x 12' 11" (5.18m x 3.94m)

BEDROOM TWO

11' 4" x 11' 5" (3.45m x 3.48m)

STUDY

7' 5" x 4' 8" (2.26m x 1.42m)

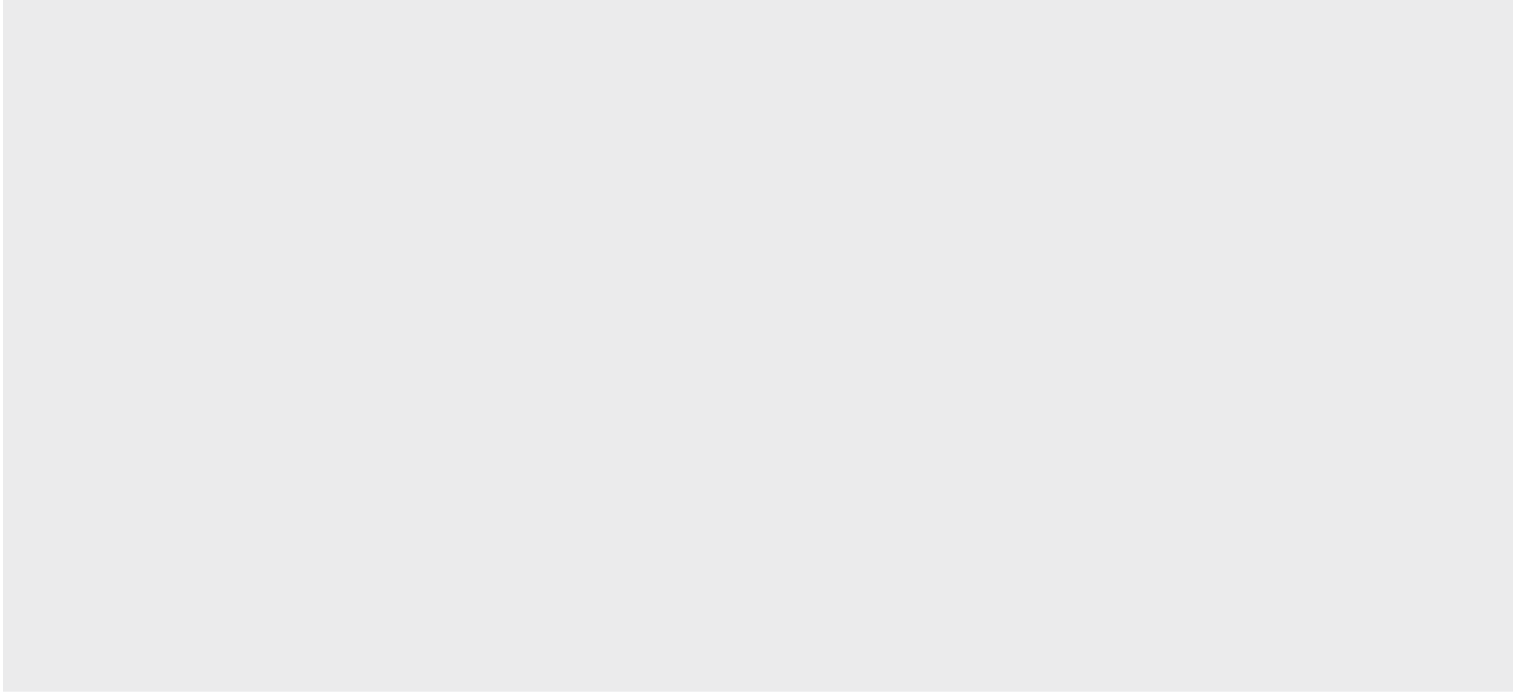
SECOND FLOOR

BEDROOM THREE

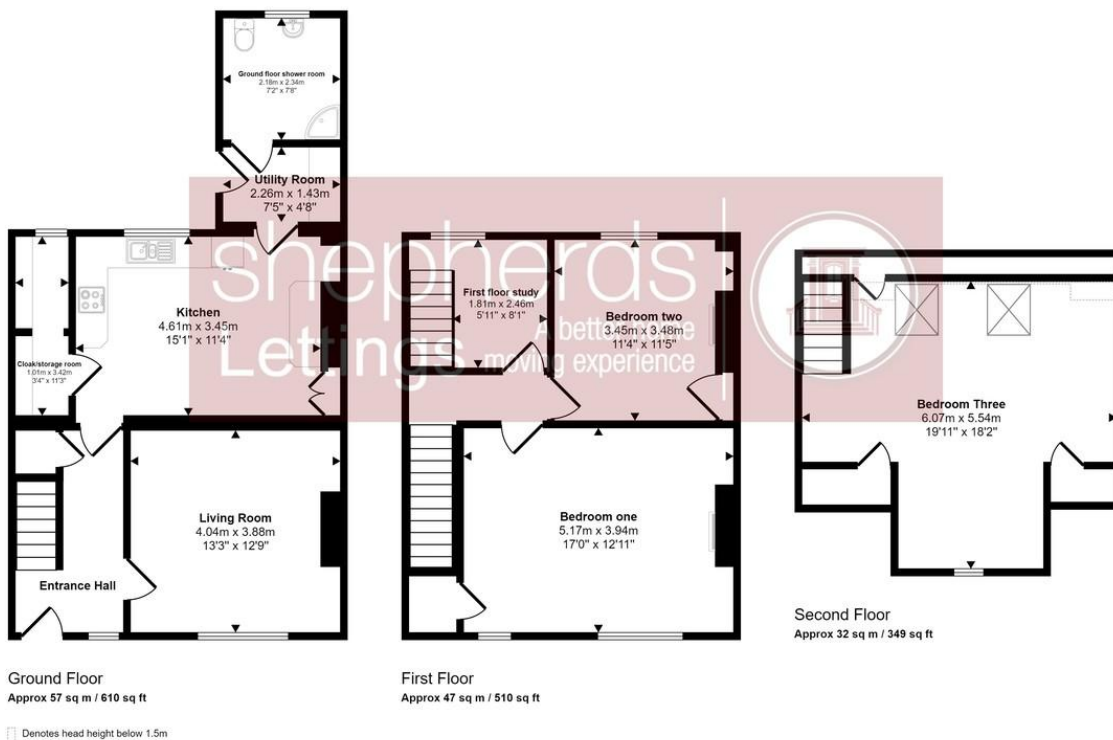
19' 2" x 18' 11" (5.84m x 5.77m)

GARDEN

PARKING



Approx Gross Internal Area
136 sq m / 1468 sq ft



This floorplan is only for illustrative purposes and is not to scale. Measurements of rooms, doors, windows, and any items are approximate and no responsibility is taken for any error, omission or mis-statement. Icons of items such as bathroom suites are representations only and may not look like the real items. Made with Made Snappy 360.

Council Tax Band

E

Viewing Arrangements

Strictly by appointment

Contact Details

6 Millbridge

Hertford

Hertfordshire

SG14 1PY

www.shepherdsfhertford.com

lettings@shepherdsfhertford.co.uk

01992 551955

Score	Energy rating	Current	Potential
92+	A		
81-91	B		
69-80	C		76 C
55-68	D		
39-54	E	40 E	
21-38	F		
1-20	G		

Agents Note: Whilst every care has been taken to prepare these sales particulars, they are for guidance purposes only. All measurements are approximate and for general guidance purposes only and whilst every care has been taken to ensure their accuracy, they should not be relied upon and potential buyers are advised to recheck the measurements