



6 Blenheim Close, Bidford-on-Avon
£475,000



6 Blenheim Close

Bidford-on-Avon, Alcester

Spacious four bedroom detached home in Bidford-on-Avon with modern kitchen, flexible living areas, en-suite, landscaped garden, garage, and ample parking on a quiet no-through road.
Council Tax band: E

Tenure: Freehold

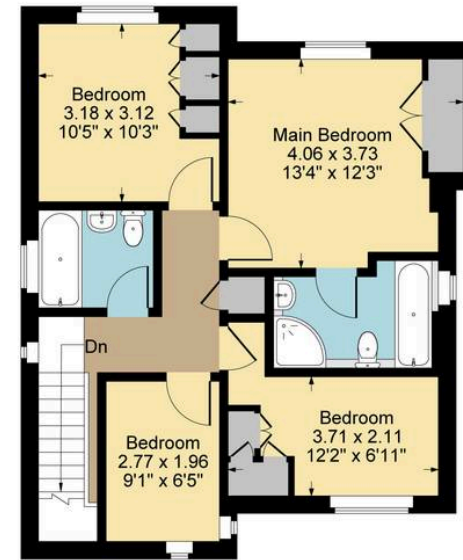
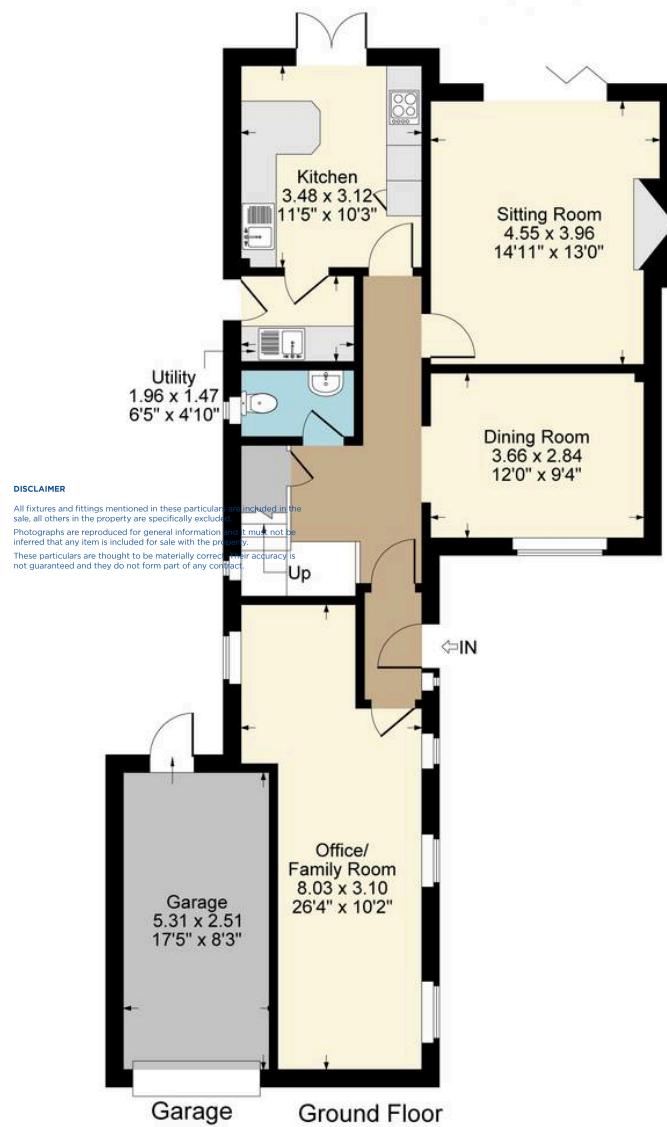
EPC Energy Efficiency Rating: D

EPC Environmental Impact Rating: D

- Desirable Village Location
- Detached House
- Deceptively Spacious Family Home
- Three Reception Rooms
- Breakfast Kitchen & Separate Utility Room
- Four Generous Bedrooms
- En-Suite To Main Bedroom
- Updated Throughout
- Garage & Driveway To Front
- Well Established Rear Garden With Feature Pergola







Approximate Gross Internal Area
 Ground Floor = 80.52 sq m / 867 sq ft
 First Floor = 57.32 sq m / 617 sq ft
 Garage = 12.89 sq m / 139 sq ft
 Total Area = 150.73 sq m / 1623 sq ft
 Illustration for identification purposes only,
 measurements are approximate, not to scale.

Sheldon Bosley Knight Stratford-Upon-Avon

Sheldon Bosley Knight, 35-36 Rother Street - CV37 6LP

01789387887 · stratfordsales@sheldonbosleyknight.co.uk · www.sheldonbosleyknight.co.uk/

Disclaimer:
 All fixtures and fittings mentioned in these particulars are included in the sale, all others in the property are specifically excluded. Photographs are reproduced for general information and must not be inferred that any item is included for sale with the property. These particulars are thought to be materially correct. Their accuracy is not guaranteed and they do not form part of any contract.

Future Development & Planning:
 Sheldon Bosley Knight cannot comment on future development of neighbouring land. Buyers should make their own enquiries regarding any current or proposed planning applications that may affect the property or surrounding area and may only reply upon written responses to questions on this matter.