



Redmayne Arnold & Harris  
estate agents, letting agents & surveyors

rah.co.uk

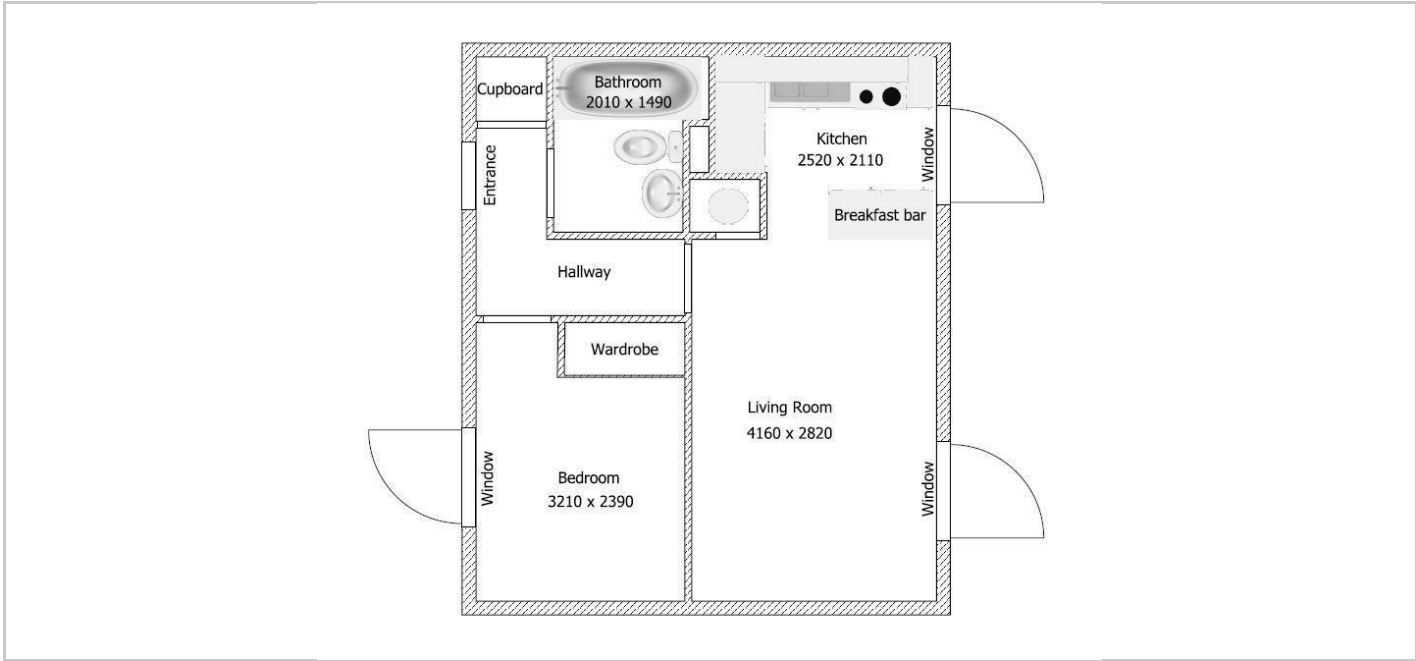


TO LET



166 Tamarin Gardens, Cambridge, CB1 9GJ

£1,200 PCM



Directions

THE PROPERTY

A one bedroom 1st floor apartment located on the outskirts of Cambridge, offering easy access to ARM, Addenbrookes & A14. The property comprises entrance hall, open-plan kitchen/living room with breakfast bar, double bedroom, bathroom and storage cupboard. Outside there is off-road parking. This property will be managed by RAH directly.

- Council Tax Band: B
- EPC Rating: C
- Minimum 6 Month Tenancy
- Deposit: £1380
- Holding Deposit: £270

SITUATION

