

# oakheart



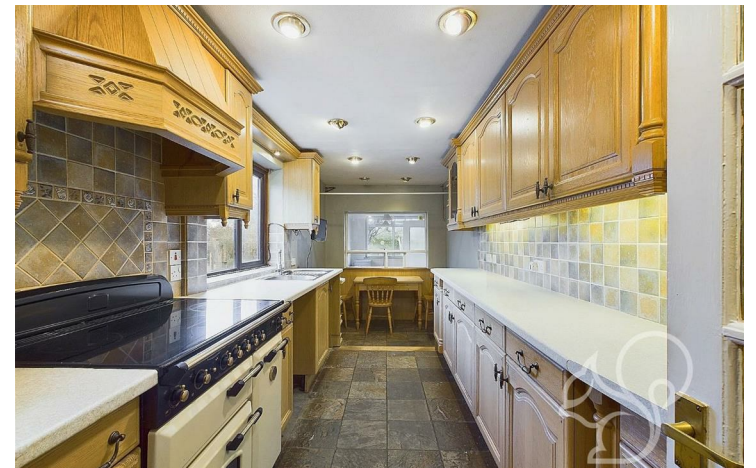
£500,000

Offers In Excess Of  
Easthorpe Road, Easthorpe





Offered with no onward chain is this exceptional three-bedroom Grade II Listed farmhouse is a rare historic gem, dating back to 1350 and once serving as a Royal Hunting Lodge. Steeped in rich history, this remarkable home seamlessly combines period charm with modern comforts. One of its most notable features is the original inglenook fireplace, which was relocated to Colchester Castle but has been meticulously reconstructed using authentic reclaimed materials from the era by the previous owner.

















oakheart