



# Rathbone Place

London, W1T

Asking Price £1,080,000

Positioned within the prestigious Rathbone Square development in the heart of Fitzrovia, this exceptional sixth-floor residence presents a rare opportunity to own a luxury apartment in one of Prime Central London's most sought-after addresses.

Designed for discerning professionals, international buyers and investors alike, the apartment offers approximately 584 sq ft of beautifully curated living space, combining elegant contemporary interiors with the convenience of five-star resident amenities.

Natural light floods the expansive open-plan living and dining area through floor-to-ceiling glazing, while the bespoke kitchen is seamlessly integrated for both everyday living and sophisticated entertaining. The generous principal bedroom benefits from fitted storage, a luxurious en-suite bathroom and direct access to a private balcony overlooking the tranquil landscaped gardens of Rathbone Square.

**CHESTERTONS**



# Rathbone Place

London, W1T

Every detail has been carefully considered, with underfloor heating, comfort cooling, smart home technology, premium finishes and exceptional craftsmanship creating a refined turnkey residence in the centre of London's West End.

Beyond the apartment itself, residents enjoy an unrivalled lifestyle experience. Amenities include a 24-hour concierge and security team, state-of-the-art fitness centre, 18-metre swimming pool, sauna, steam room, private cinema, residents' lounge, wine cellar and tasting room, co-working spaces and beautifully maintained gardens.



Perfectly located moments from Charlotte Street, Soho, Oxford Street and Covent Garden, the development places some of London's finest restaurants, luxury shopping destinations and cultural landmarks within easy walking distance. Tottenham Court Road, Oxford Circus and Goodge Street stations provide outstanding connectivity across London, Heathrow Airport and the Elizabeth Line network.

Whether acquired as a prestigious London pied-à-terre, a secure long-term investment or a stylish primary residence, this apartment represents a compelling opportunity within one of Central London's most established luxury developments.

**Tenure:** Leasehold 988 Years  
**Service Charge:** £11,000  
**Ground Rent:** £500  
**Local Authority:** City Of Westminster  
**Council Tax Band:** E

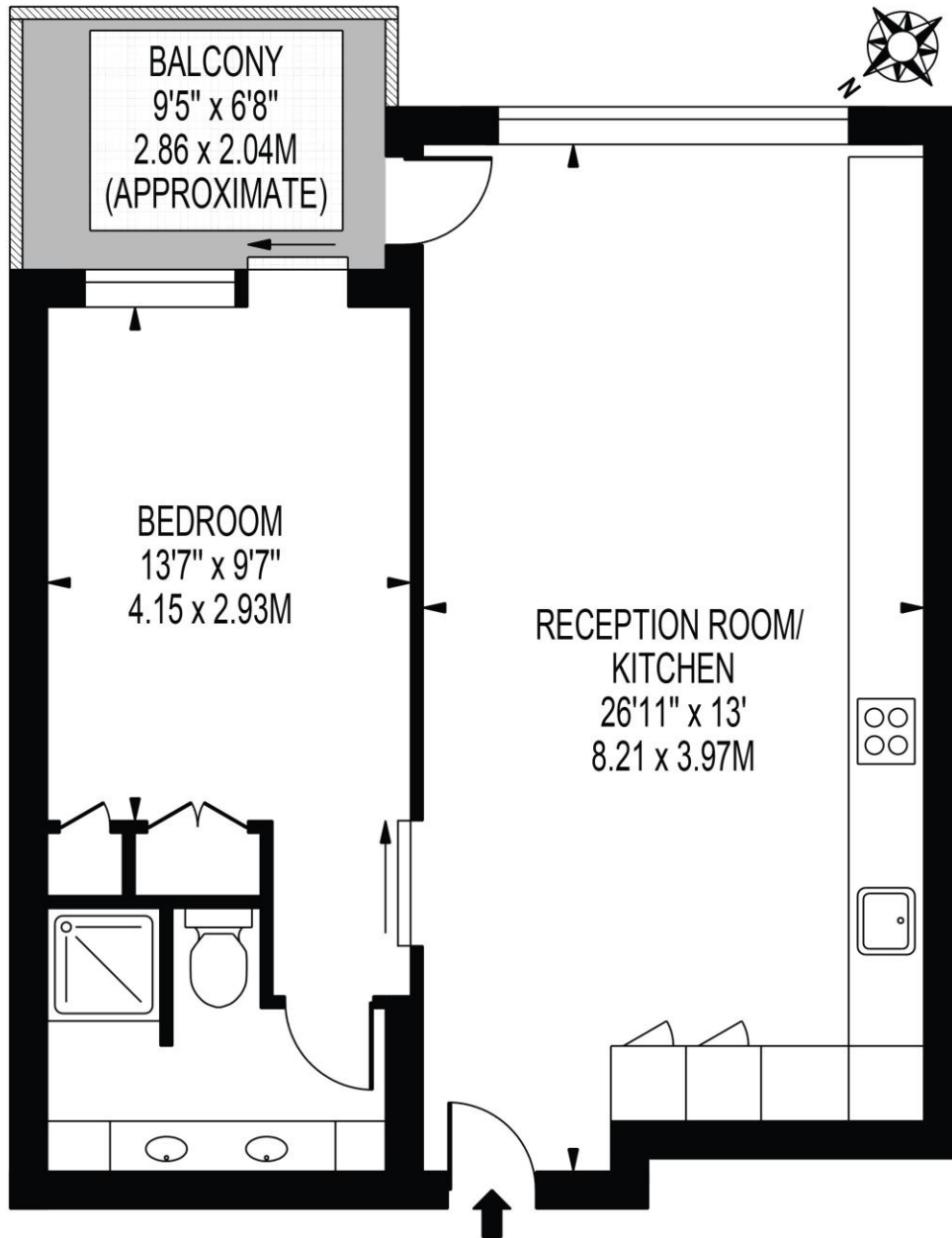
Score	Energy rating	Current	Potential
92+	A		
81-91	B	88 B	88 B
69-80	C		
55-68	D		
39-54	E		
21-38	F		
1-20	G		

### *Chestertons Covent Garden Sales*

196 Shaftesbury Avenue  
 London  
 WC2H 8JF  
 coventgarden@chestertons.co.uk  
 020 3040 8300  
 chestertons.co.uk

# RATHBONE PLACE

APPROXIMATE GROSS INTERNAL FLOOR AREA: 565 SQ FT - 52.50 SQ M



SIXTH FLOOR

FOR ILLUSTRATION PURPOSES ONLY

THIS FLOOR PLAN SHOULD BE USED AS A GENERAL OUTLINE FOR GUIDANCE ONLY AND DOES NOT CONSTITUTE IN WHOLE OR IN PART AN OFFER OR CONTRACT. ANY INTENDING PURCHASER OR LESSEE SHOULD SATISFY THEMSELVES BY INSPECTION, SEARCHES, ENQUIRIES AND FULL SURVEY AS TO THE CORRECTNESS OF EACH STATEMENT. ANY AREAS, MEASUREMENTS OR DISTANCES QUOTED ARE APPROXIMATE AND SHOULD NOT BE USED TO VALUE A PROPERTY OR BE THE BASIS OF ANY SALE OR LET.

Chesterton UK Services Limited trading as Chestertons for themselves and for the vendor of this property whose agents they are, give notice that (i) these particulars do not constitute any part of an offer or contract, (ii) all statements contained within these particulars are made without responsibility on the part of Chestertons or the vendor, (iii) whilst made in good faith, none of the statements contained within these particulars are to be relied upon as a statement or representation of fact, (iv) any intending purchasers must satisfy themselves by inspection or otherwise as to the correctness of each of the statements contained within these particulars, (v) the vendor does not make or give either Chestertons or any person in their employment any authority to make or give representation or warranty whatsoever in relation to this property. Wide angle lenses may be used. ©Copyright Chestertons | Chesterton UK Services Limited | Registered Office 5th Floor, The Lantern, 75 Hampstead Road, London, NW1 2PL. Registered Company Number 05334580.



This paper is 100% recyclable