



**Connells**

Armstrongs Fields  
Broughton Aylesbury



# Armstrongs Fields Broughton Aylesbury HP22 7BR

for sale offers over  
**£415,000**



## Property Description

The ground floor opens with a modern entrance hall finished with sleek laminate flooring, leading to a handy cloakroom. At the rear, a bright and inviting lounge enjoys an abundance of natural light, with elegant French doors that extend the living space out to a secluded garden. The kitchen is beautifully equipped with high-quality integrated appliances, including an electric hob and oven, dishwasher, fridge/freezer, and space for a washing machine.

The first floor hosts two well-proportioned bedrooms, both featuring wood effect flooring and excellent natural light. A stylish family bathroom serves this level, complete with a bath and mixer tap. The top floor is dedicated entirely to the luxurious master suite, offering impressive space and a private ensuite fitted with a contemporary shower cubicle.

Outside, the rear garden provides a peaceful retreat, fully enclosed and laid to lawn, ideal for families, pets, or quiet moments of relaxation. A private driveway ensures secure off-street parking.

Kingsbrook enjoys a prime position on the southeast edge of the town centre, with a highly regarded primary school, family-friendly amenities, and easy access to shops and

healthcare facilities. Reliable bus links offer excellent connectivity throughout the area.

## Entrance Hall

Door to front  
Laminate underfoot

## Cloakroom

Window to front  
WC  
WHB  
Radiator  
Laminate underfoot

## Lounge

15' 2" max x 13' 1" max ( 4.62m max x 3.99m max )  
French doors to rear garden  
Window to side  
Radiator  
Understairs cupboard  
Laminate underfoot

## Kitchen

12' 9" max x 6' 3" max ( 3.89m max x 1.91m max )  
Window to front  
Wall and base units  
Sink/drain  
Integrated fridge/freezer, dishwasher and electric oven/hob

Space for washing machine  
Laminate underfoot

Landing

Carpet underfoot

Bedroom One (TOP FLOOR)

28' 6" max x 9' max ( 8.69m max x 2.74m max )  
Window to front  
Skylight to rear  
Storage cupboard  
Radiator  
Carpet underfoot

En-Suite (top Floor)

Skylight to front  
WC  
WHB  
Shower cubicle  
Radiator  
Wood effect flooring underfoot

Bedroom Two

10' 8" max x 13' 1" max ( 3.25m max x 3.99m max )  
Two windows to front  
Radiator  
Woof effect flooring underfoot

Bedroom Ththree

9' 8" max x 13' 3" max ( 2.95m max x 4.04m max )  
Two windows to rear  
Radiator

Wood effect flooring underfoot

Bathroom

Window to side  
WC  
WHB  
Bath/mixer  
Radiator  
Part tiled  
Wood effect flooring underfoot

Rear Garden

Large laid lawn  
Enclosed fencing

Parking

Driveway

Agents Note

ANNUAL MANAGEMENT CHARGE £282.36

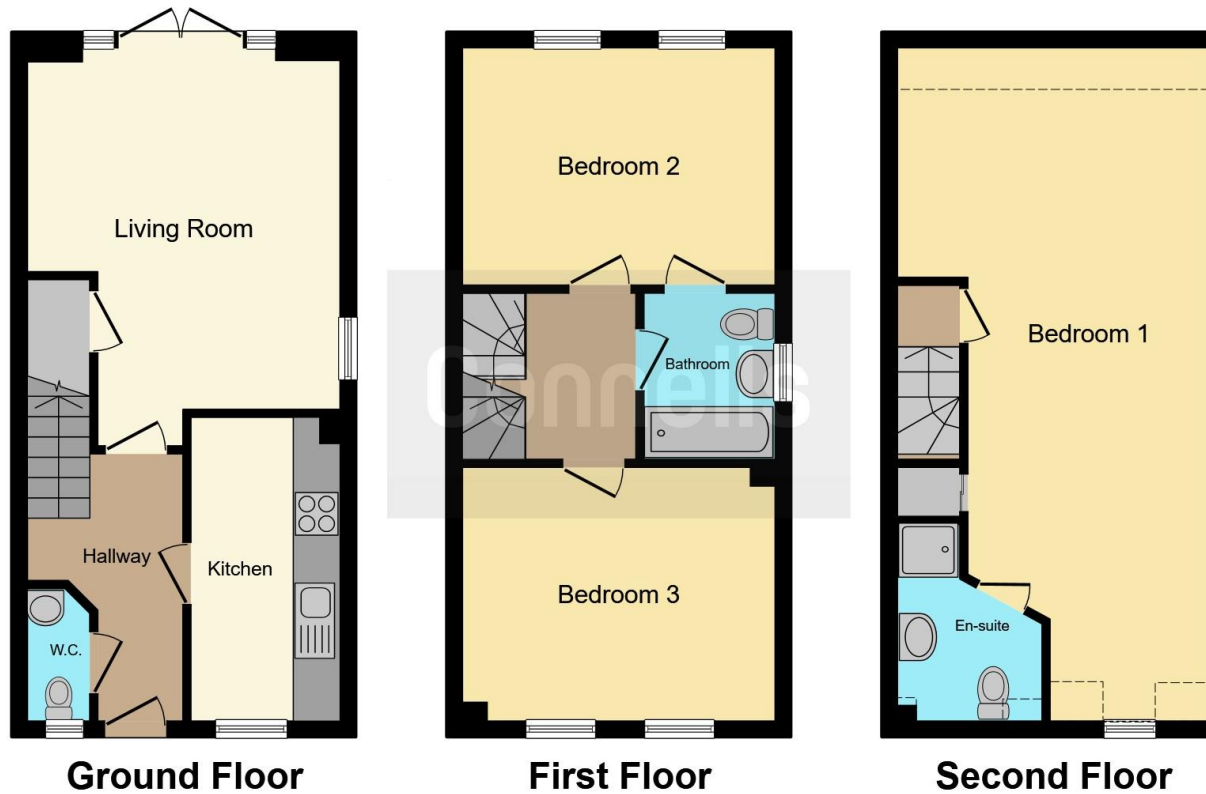












This floor plan is for illustrative purposes only. It is not drawn to scale. Any measurements, floor areas (including any total floor area), openings and orientation are approximate. No details are guaranteed, they cannot be relied upon for any purpose and they do not form part of any agreement. No liability is taken for any error, omission or misstatement. A party must rely upon its own inspection(s). Powered by [www.focalagent.com](http://www.focalagent.com)

To view this property please contact Connells on

**T 01296 395 111**  
**E [aylesbury@connells.co.uk](mailto:aylesbury@connells.co.uk)**

2 Temple Street  
 AYLESBURY HP20 2RH

EPC Rating: B Council Tax  
 Band: E

Tenure: Freehold

**view this property online [connells.co.uk/Property/ALS312436](http://connells.co.uk/Property/ALS312436)**



1. MONEY LAUNDERING REGULATIONS Intending purchasers will be asked to produce identification documentation at a later stage and we would ask for your co-operation in order that there will be no delay in agreeing the sale. 2. These particulars do not constitute part or all of an offer or contract. 3. The measurements indicated are supplied for guidance only and as such must be considered incorrect. Potential buyers are advised to recheck measurements before committing to any expense. 4. We have not tested any apparatus, equipment, fixtures, fittings or services and it is in the buyers interest to check the working condition of any appliances.

Connells Residential is registered in England and Wales under company number 1489613, Registered Office is Cumbria House, 16-20 Hockliffe Street, Leighton Buzzard, Bedfordshire, LU7 1GN. VAT Registration Number is 500 2481 05.

**See all our properties at [www.connells.co.uk](http://www.connells.co.uk) | [www.rightmove.co.uk](http://www.rightmove.co.uk) | [www.zoopla.co.uk](http://www.zoopla.co.uk)**

Property Ref: ALS312436 - 0007